



# CorePro LED PLL

## CorePro LED PLL HF 16.5W 865 4P 2G11

Philips CorePro LED PLL is the ideal uplamping solution for downlights & luminaires in a wide range of general lighting applications. It integrates a LED light source into a traditional fluorescent form factor to offer superb energy savings over a lifetime that's twice as long as fluorescent alternatives.

### Product data

General Information	
Cap-Base	2G11
Nominal lifetime	30,000 hour(s)
Switching Cycle	50,000
Lighting Technology	LED
Flux measurement reference	Sphere
CE mark	Yes
EU RoHS compliant	Yes

Light Technical	
Color Code	865 [CCT of 6500K]
Beam Angle (Nom)	160 degree(s)
Luminous Flux	2,100 lm
Color Designation	Cool Daylight
Correlated Color Temperature (Nom)	6500 K
Luminous Efficacy (rated) (Nom)	127.00 lm/W
Color Consistency	<6
Color rendering index (CRI)	83
LLMF At End Of Nominal Lifetime (Nom)	70 %
Photobiological safety according to EN 62471	RG0

Operating and Electrical	
Line Frequency	39000-71000 Hz

Input Frequency	39000-71000 Hz
Power Consumption	16.5 W
Lamp Current (Max)	420 mA
Lamp Current (Min)	290 mA
Starting Time (Nom)	0.5 s
Warm-up time to 60% light	0.5 s
Power Factor (Fraction)	0.9
Voltage (Nom)	53-77 V
LED alternative to fluorescent lamp power	36 W
Inrush current at mains	-
Max. lamp no. on MCB B type 10A - Mains	-
Max. lamp no. on MCB B type 10A – EM ballast without Comp. Cap.	-
Max. lamp no. on MCB B type 10A – EM ballast with Comp. Cap.	-
Max. lamp no. on MCB B type 16A - Mains	-
Max. lamp no. on MCB B type 16A – EM ballast without Comp. Cap.	-
Max. lamp no. on MCB B type 16A – EM ballast with Comp. Cap.	-

Temperature	
Ambient temperature range	-20 °C to 45 °C

# CorePro LED PLL

T-Case Maximum (Nom)	70 °C
<b>Controls and Dimming</b>	
Dimmable	No
<b>Mechanical and Housing</b>	
Bulb Material	Glass
Product Length	400 mm
Bulb Shape	PL-L
<b>Approval and Application</b>	
Energy Efficiency Class	E
Energy Saving Product	Yes
Approval Marks	TUV CE marking RoHS compliance KEMA Keur certificate
Energy Consumption kWh/1000 h	17 kWh

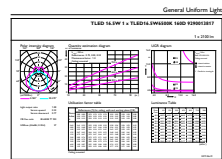
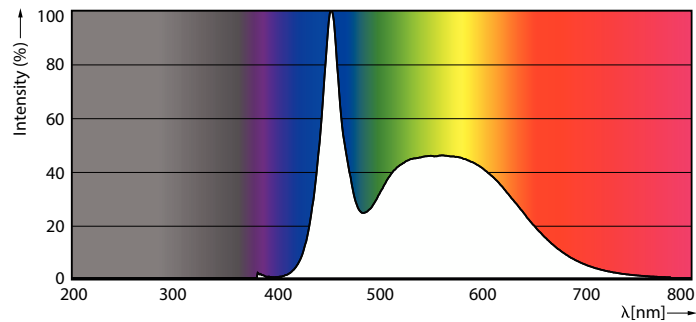
EPREL Registration Number	387354
<b>Product Data</b>	
Order product name	CorePro LED PLL HF 16.5W 865 4P 2G11
Full product name	CorePro LED PLL HF 16.5W 865 4P 2G11
Full product code	871869673976100
Order code	929001381702
Material Nr. (12NC)	929001381702
Numerator - Quantity Per Pack	1
EAN/UPC - Product/Case	8718696739761
Numerator - Packs per outer box	10
EAN/UPC - Case	8718696739778

## Dimensional drawing



Product	D1	D2	A1	A2	A3
CorePro LED PLL HF 16.5W 865 4P 2G11	43.6 mm	23.4 mm	329.5 mm	405 mm	411.6 mm

## Photometric data

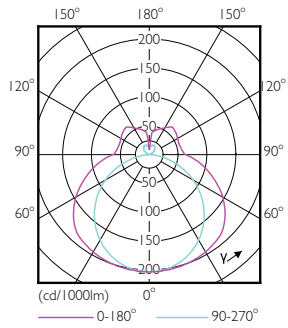


Spectral Power Distribution Colour - CorePro LED PLL HF 16.5W 865 4P 2G11

General uniform lighting - CorePro LED PLL HF 16.5W 865 4P 2G11

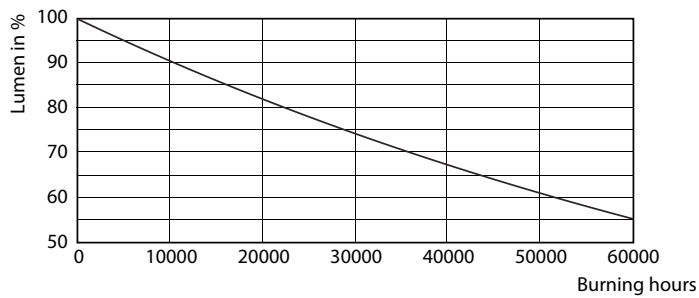
# CorePro LED PLL

## Photometric data

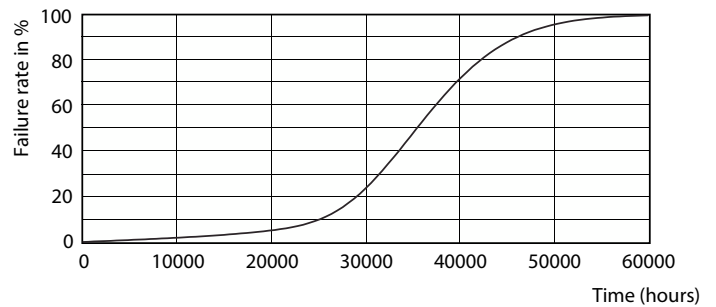


Light Distribution Diagram - CorePro LED PLL HF 16.5W 865 4P 2G11

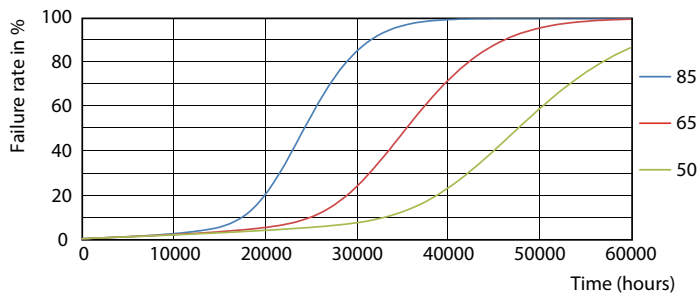
## Lifetime



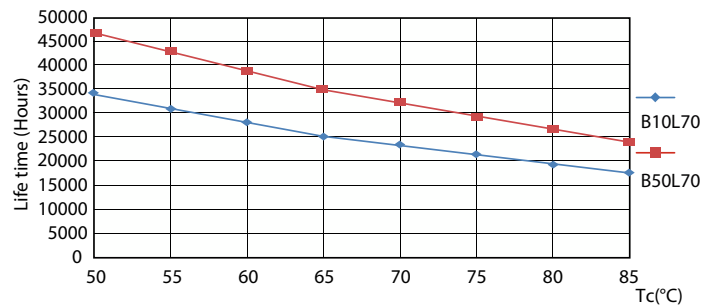
Lumen Maintenance Diagram - CorePro LED PLL HF 16.5W 865 4P 2G11



Life Expectancy Diagram - CorePro LED PLL HF 16.5W 865 4P 2G11



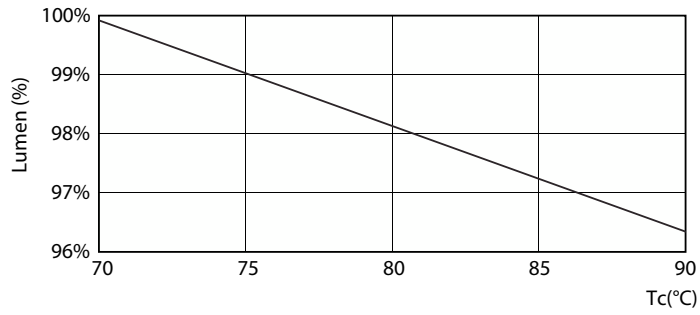
Life Expectancy Diagram - CorePro LED PLL HF 16.5W 865 4P 2G11



Life Expectancy Diagram - CorePro LED PLL HF 16.5W 865 4P 2G11

# CorePro LED PLL

## Lifetime



Lumen Maintenance Diagram - CorePro LED PLL HF 16.5W 865 4P 2G11

