



# MASTER LEDtube InstantFit HF T5

## Master LEDtube HF 600mm HE 8W 865 T5

The Philips MASTER LEDtube integrates a LED light source into a traditional fluorescent form factor. Its unique design creates a perfectly uniform visual appearance, which cannot be distinguished from traditional fluorescent. These T5 lighting tubes are the right choice for absolute performance and are designed to stand up to everyday conditions. Unparalleled savings thanks to low energy consumption and an exceptionally long lifetime make these T5 LED tubes the choice for every demanding application.

### Product data

General Information	
Cap-Base	G5 [G5]
Nominal lifetime	60,000 hour(s)
Switching Cycle	50,000
Lighting Technology	LED
Flux measurement reference	Sphere
CE mark	Yes
EU RoHS compliant	Yes
Light Technical	
Color Code	865 [CCT of 6500K]
Beam Angle (Nom)	200 degree(s)
Luminous Flux	1,050 lm
Color Designation	Cool Daylight
Correlated Color Temperature (Nom)	6500 K
Luminous Efficacy (rated) (Nom)	131 lm/W
Color Consistency	<6
Color rendering index (CRI)	80

LLMF At End Of Nominal Lifetime (Nom)	70 %
Photobiological safety according to EN 62471	RG0
Operating and Electrical	
Line Frequency	30K to 100K Hz
Input Frequency	30K to 100K Hz
Power Consumption	8 W
Lamp Current (Max)	350 mA
Lamp Current (Min)	150 mA
Starting Time (Nom)	0.5 s
Warm-up time to 60% light	0.5 s
Power Factor (Fraction)	0.92
Voltage (Nom)	40-70 V
LED alternative to fluorescent lamp power	14 W
Max. lamp no. on MCB B type 10A - Mains	-
Max. lamp no. on MCB B type 10A – EM ballast without Comp. Cap.	-

MASTER LEDtube InstantFit HF T5

Max. lamp no. on MCB B type 10A – EM ballast with Comp. Cap.	-
Max. lamp no. on MCB B type 16A – Mains	-
Max. lamp no. on MCB B type 16A – EM ballast without Comp. Cap.	-
Max. lamp no. on MCB B type 16A – EM ballast with Comp. Cap.	-

Temperature

Ambient temperature range	-4 °F to 113 °F
T-Case Maximum (Nom)	149 °F

Controls and Dimming

Dimmable	Yes - Check ballast compatibility
----------	-----------------------------------

Mechanical and Housing

Bulb Finish	Frosted
Bulb Material	Glass
Product Length	23-5/8 inch
Bulb Shape	T5

Approval and Application

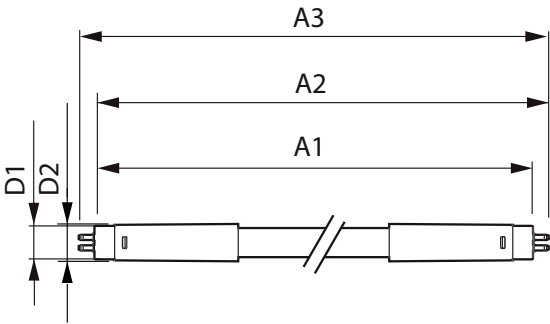
Energy Efficiency Class	E
-------------------------	---

Energy Saving Product	Yes
Approval Marks	RoHS compliance TUV CE marking KEMA Keur certificate
Energy Consumption kWh/1000 h	8 kWh
EPREL Registration Number	1384133

Product Data

Order product name	MAS LEDtube HF 600mm HE 8W 865 T5
Full product name	Master LEDtube HF 600mm HE 8W 865 T5
Full product code	871869674327000
Order code	345744
Material Nr. (12NC)	929001390902
Numerator - Quantity Per Pack	1
EAN/UPC - Product/Case	8718696743270
Numerator - Packs per outer box	10
EAN/UPC - Case	8718696743287

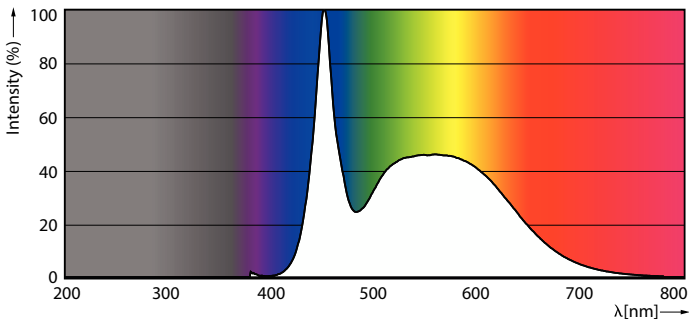
Dimensional drawing



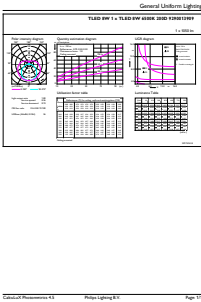
Product	D1	D2	A1	A2	A3
MAS LEDtube HF 600mm HE 8W 865 T5	5/8 inch	3/4 inch	21-5/8 inch	21-15/16 inch	22-3/16 inch

MASTER LEDtube InstantFit HF T5

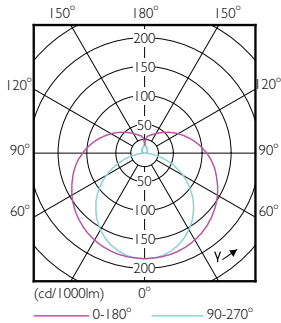
Photometric data



Spectral Power Distribution Colour - MAS LEDtube HF 600mm HE 8W 865 T5

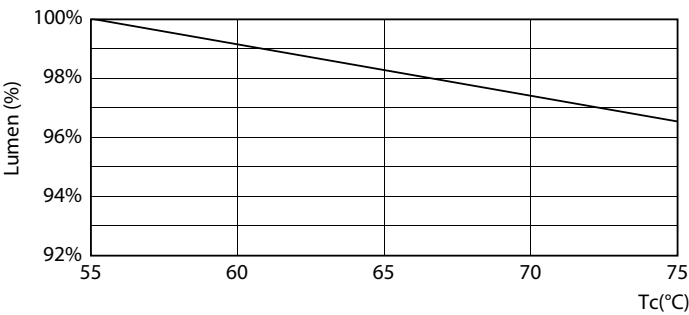


General uniform lighting - MAS LEDtube HF 600mm HE 8W 865 T5

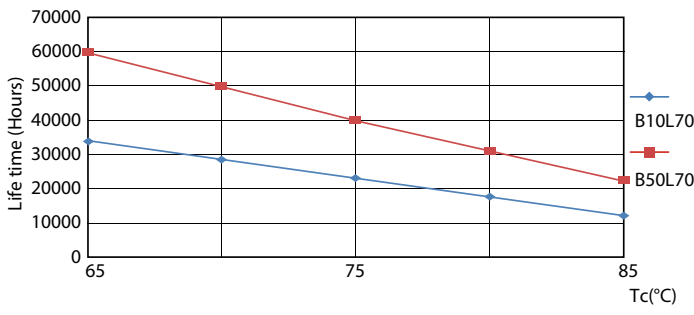


Light Distribution Diagram - MAS LEDtube HF 600mm HE 8W 865 T5

Lifetime



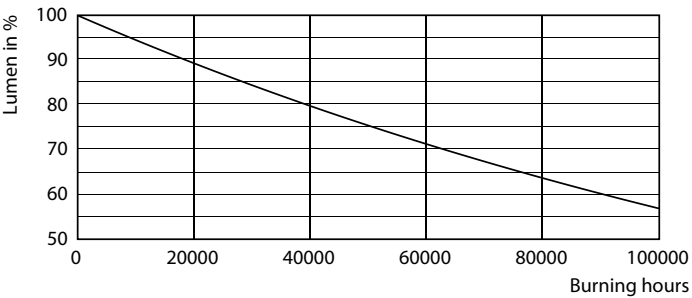
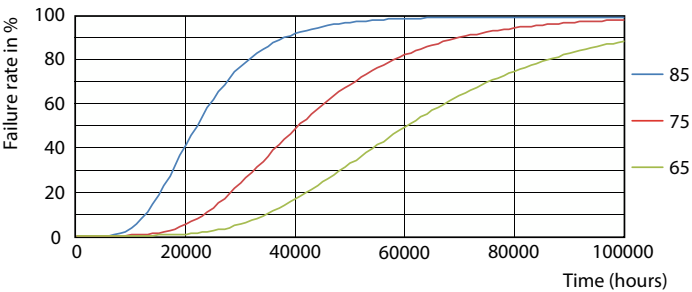
Lumen Maintenance Diagram - MAS LEDtube HF 600mm HE 8W 865 T5



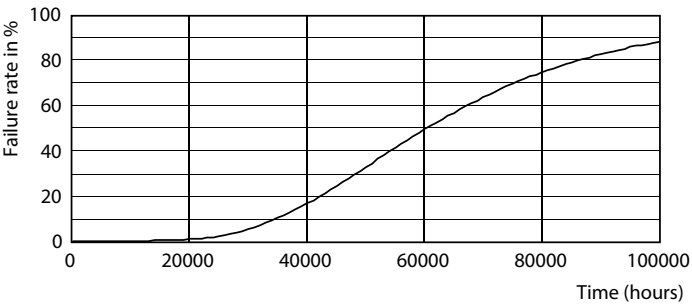
Life Expectancy Diagram - MAS LEDtube HF 600mm HE 8W 865 T5

# MASTER LEDtube InstantFit HF T5

## Lifetime



Life Expectancy Diagram - MAS LEDtube HF 600mm HE 8W 865 T5



Lumen Maintenance Diagram - MAS LEDtube HF 600mm HE 8W 865 T5

Life Expectancy Diagram - MAS LEDtube HF 600mm HE 8W 865 T5

