



MASTER LEDtube InstantFit HF T5

MAS LEDtube HF 1200mm HE 16.5W 830 T5

The Philips MASTER LEDtube integrates a LED light source into a traditional fluorescent form factor. Its unique design creates a perfectly uniform visual appearance, which cannot be distinguished from traditional fluorescent. These T5 lighting tubes are the right choice for absolute performance and are designed to stand up to everyday conditions. Unparalleled savings thanks to low energy consumption and an exceptionally long lifetime make these T5 LED tubes the choice for every demanding application.

Product data

General Information		LLMF At End Of Nominal Lifetime (Nom)	
Cap-Base	G5 [G5]		70 %
Nominal lifetime	60,000 hour(s)	Photobiological safety according to EN 62471	RG0
Switching Cycle	50,000		
Lighting Technology	LED	Operating and Electrical	
Flux measurement reference	Sphere	Line Frequency	30K to 100K Hz
CE mark	Yes	Input Frequency	30K to 100K Hz
EU RoHS compliant	Yes	Power Consumption	16.5 W
		Lamp Current (Max)	350 mA
		Lamp Current (Min)	150 mA
		Starting Time (Nom)	0.5 s
		Warm-up time to 60% light	0.5 s
		Power Factor (Fraction)	0.92
		Voltage (Nom)	70-120 V
		LED alternative to fluorescent lamp power	28 W
		Max. lamp no. on MCB B type 10A - Mains	-
		Max. lamp no. on MCB B type 10A – EM ballast without Comp. Cap.	-
Light Technical			
Color Code	830 [CCT of 3000K]		
Beam Angle (Nom)	200 degree(s)		
Luminous Flux	2,300 lm		
Color Designation	White (WH)		
Correlated Color Temperature (Nom)	3000 K		
Luminous Efficacy (rated) (Nom)	139.00 lm/W		
Color Consistency	<6		
Color rendering index (CRI)	80		

MASTER LEDtube InstantFit HF T5

Max. lamp no. on MCB B type 10A – EM ballast with Comp. Cap.	-
Max. lamp no. on MCB B type 16A – Mains	-
Max. lamp no. on MCB B type 16A – EM ballast without Comp. Cap.	-
Max. lamp no. on MCB B type 16A – EM ballast with Comp. Cap.	-

Temperature

Ambient temperature range	-20 °C to 45 °C
T-Case Maximum (Nom)	65 °C

Controls and Dimming

Dimmable	Yes - Check ballast compatibility
----------	-----------------------------------

Mechanical and Housing

Bulb Finish	Frosted
Bulb Material	Glass
Product Length	1,200 mm
Bulb Shape	T5

Approval and Application

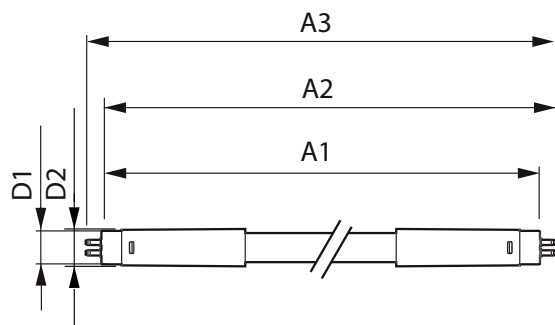
Energy Efficiency Class	E
-------------------------	---

Energy Saving Product	Yes
Approval Marks	RoHS compliance TUV CE marking KEMA Keur certificate
Energy Consumption kWh/1000 h	17 kWh
EPREL Registration Number	1384134

Product Data

Order product name	MAS LEDtube HF 1200mm HE 16.5W 830 T5
Full product name	MAS LEDtube HF 1200mm HE 16.5W 830 T5
Full product code	871869674329400
Order code	929001391002
Material Nr. (12NC)	929001391002
Numerator - Quantity Per Pack	1
EAN/UPC - Product/Case	8718696743294
Numerator - Packs per outer box	10
EAN/UPC - Case	8718696743300

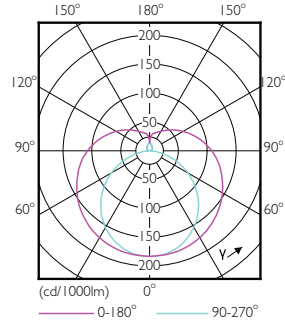
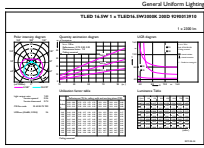
Dimensional drawing



Product	D1	D2	A1	A2	A3
MAS LEDtube HF 1200mm HE 16.5W 830 T5	15.5 mm	18.8 mm	1,149 mm	1,156.1 mm	1,163.2 mm

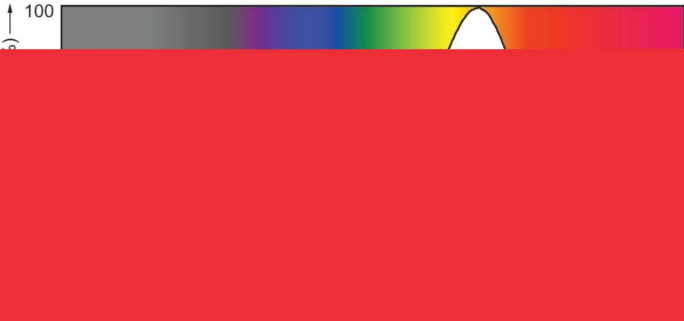
MASTER LEDtube InstantFit HF T5

Photometric data



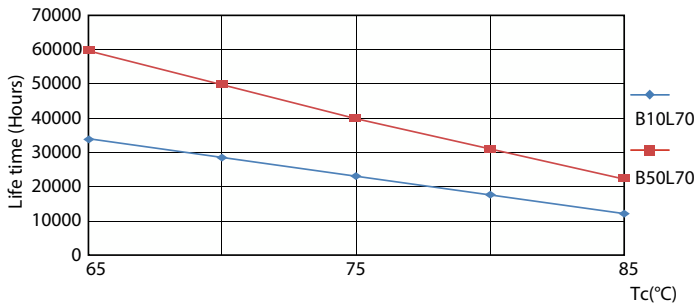
General uniform lighting - MAS LEDtube HF 1200mm HE 16.5W 830 T5

Light Distribution Diagram - MAS LEDtube HF 1200mm HE 16.5W 830 T5

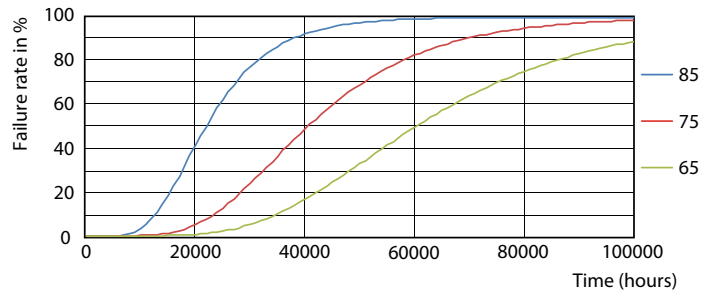


Spectral Power Distribution Colour - MAS LEDtube HF 1200mm HE 16.5W 830 T5

Lifetime



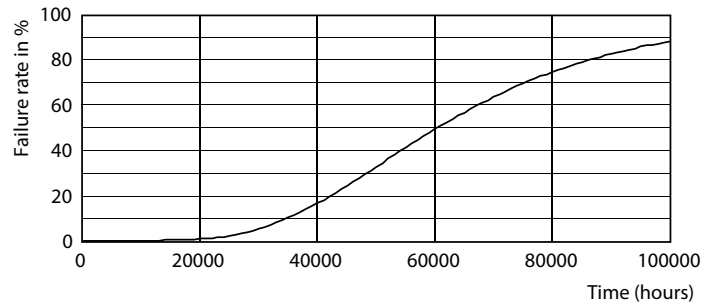
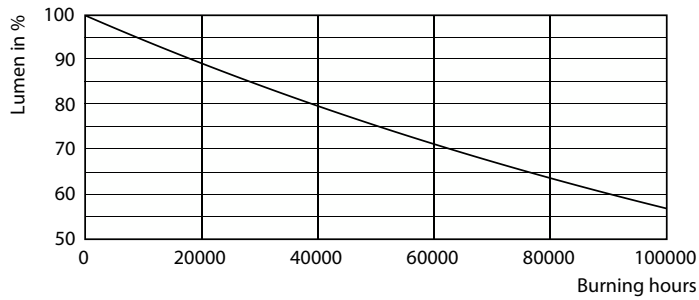
Life Expectancy Diagram - MAS LEDtube HF 1200mm HE 16.5W 830 T5



Life Expectancy Diagram - MAS LEDtube HF 1200mm HE 16.5W 830 T5

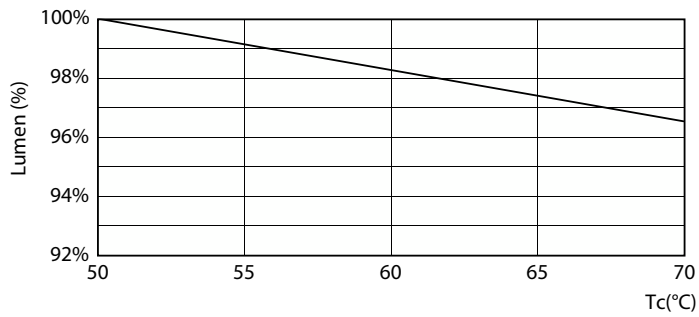
MASTER LEDtube InstantFit HF T5

Lifetime



Lumen Maintenance Diagram - MAS LEDtube HF 1200mm HE 16.5W 830 T5

Life Expectancy Diagram - MAS LEDtube HF 1200mm HE 16.5W 830 T5



Lumen Maintenance Diagram - MAS LEDtube HF 1200mm HE 16.5W 830 T5

