



MASTER LEDtube InstantFit HF T5

Master LEDtube HF 1200mm HE 16.5W 865 T5

The Philips MASTER LEDtube integrates an LED light source into a traditional fluorescent form factor. Its unique design creates a perfectly uniform visual appearance, which cannot be distinguished from traditional fluorescents. These T5 lighting tubes are the right choice for absolute performance and are designed to stand up to everyday conditions. Unparalleled savings, thanks to low energy consumption and an exceptionally long lifetime, make these T5 LED tubes the choice for every demanding applications.

Product data

General information	
Cap base	G5 [G5]
CE mark	Yes
EU RoHS compliant	Yes
Nominal lifetime (nom.)	60000 h
Switching cycle	50000
	Sphere
Tier	MASTER

Light technical	
Colour Code	865 [CCT of 6,500 K]
Beam Angle (Nom)	200 °
Luminous flux (nom.)	2500 lm
Colour designation	Cool Daylight
Correlated Colour Temperature (Nom)	6500 K
Luminous efficacy (rated) (nom.)	151 lm/W
Colour consistency	<6
Colour rendering index (nom.)	80

LLMF at end of nominal lifetime (nom.) 70 %	
---	--

Operating and electrical	
Input frequency	30 K to 100 K Hz
Power (Rated) (Nom)	16.5 W
Lamp current (max.)	350 mA
Lamp current (min.)	150 mA
Wattage equivalent	28 W
Starting time (nom.)	0.5 s
Warm-up time to 60% light (nom.)	0.5 s
Power factor (nom.)	0.92
Voltage (Nom)	70-120 V

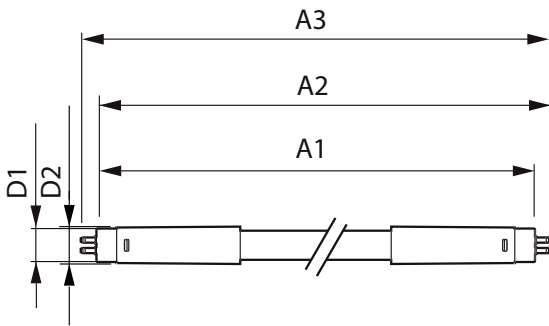
Temperature	
T-ambient (max.)	45 °C
T-ambient (min.)	-20 °C
T storage (max.)	65 °C
T storage (min.)	-40 °C

MASTER LEDtube InstantFit HF T5

T-Case maximum (nom.)	65 °C
Controls and dimming	
Dimmable	Yes – Check ballast compatibility
Mechanical and housing	
Lamp Finish	Frosted
Bulb material	Glass
Product length	1200 mm
Bulb shape	Tube, double-ended
Approval and application	
Energy Efficiency Class	D
Energy-saving product	Yes
Approval marks	RoHS compliance TUV CE marking KEMA Keur certificate

Energy consumption kWh/1,000 hours	17 kWh
	406188
Product data	
Full product code	871869674333100
Order product name	Master LEDtube HF 1200mm HE 16.5W 865 T5
EAN/UPC – product	8718696743331
Order code	74333100
SAP numerator – quantity per pack	1
Numerator – packs per outer box	10
SAP material	929001391202
Net Weight (Piece)	0.160 kg

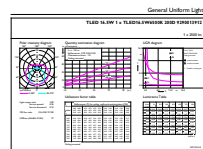
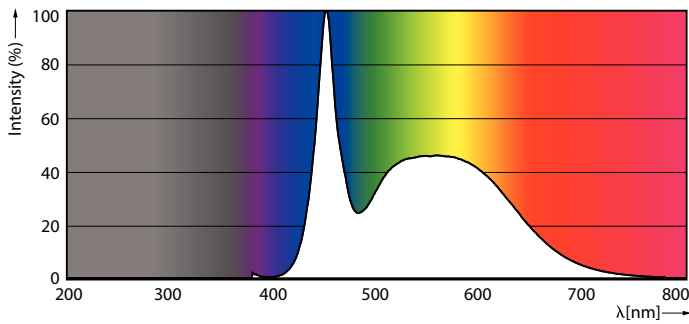
Dimensional drawing



Master LEDtube HF 1200mm HE 16.5W 865 T5

Product	D1	D2	A1	A2	A3
Master LEDtube HF 1200mm HE 16.5W 865 T5	15.5 mm	18.8 mm	1149 mm	1156.1 mm	1163.2 mm

Photometric data

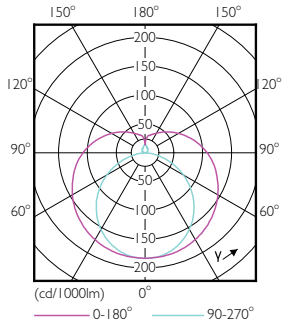


LEDtubes, TLED T12 120-277V 20W 6500K G13

LEDtube 1200mm 16-5W G5 865 2500lm

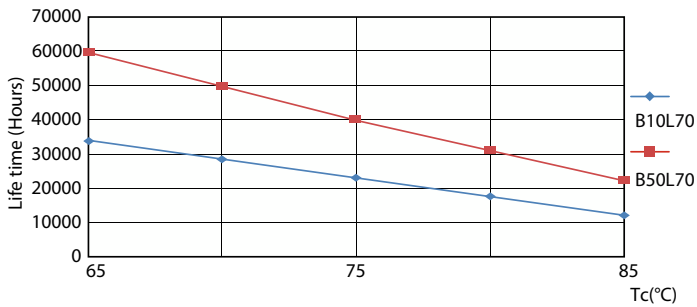
MASTER LEDtube InstantFit HF T5

Photometric data

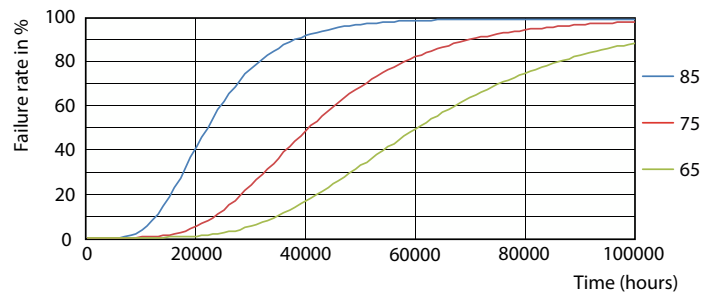


LEDtube 600mm 8W G5 830 1000lm

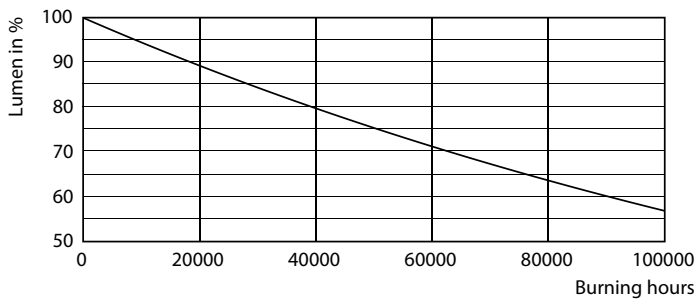
Lifetime



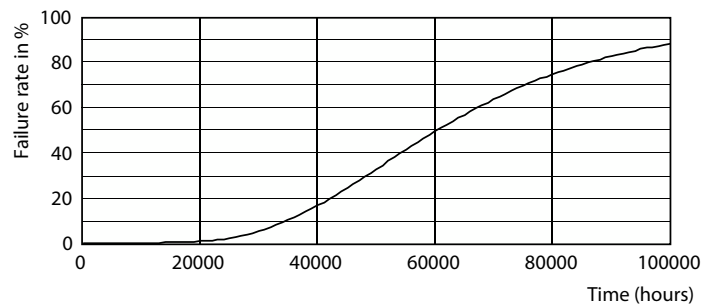
LifetimeVsTc



FailureRate



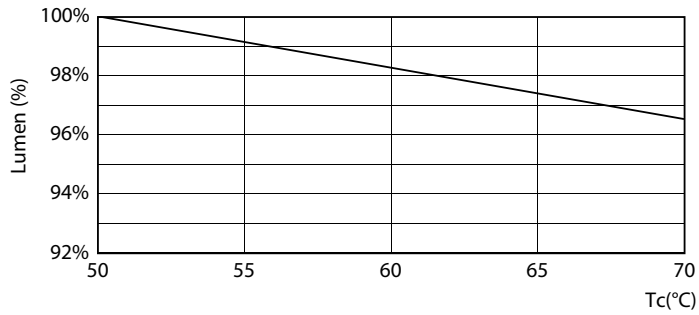
Lumen Maintenance Diagram



Life Expectancy Diagram

MASTER LEDtube InstantFit HF T5

Lifetime



LEDtube MAS SLR 16,5W 60K LumenVsTc-LMP

