



MASTER LEDtube InstantFit HF T5

MAS LEDtube HF 1200mm HE 16.5W 865 T5

Philips MASTER LEDtube InstantFit T5 integrates a LED light source into a traditional fluorescent form factor. Its unique design creates a perfectly uniform visual appearance which cannot be distinguished from traditional fluorescents. The Philips MASTER LEDtube InstantFit T5 is the ideal solution for customers who have higher light output requirements and want to maximise value over the lifetime. The full energy savings & longer lifetime result in attractive payback times and TCO benefits.

Product data

General Information	
Cap base	G5 [G5]
Nominal lifetime (nom.)	50000 h
Switching cycle	50000X
B50L70	50000 h

Light Technical	
Colour Code	865 [CCT of 6,500 K]
Lamp Luminous Flux 25°C EL (Nom)	2500 lm
Lamp Luminous Flux (Nom)	2500 lm
Colour Temperature, horizontal (Nom)	6500 K
Colour consistency	<6
Colour Rendering Index,horiz (Nom)	83
LLMF at end of nominal lifetime (nom.)	70 %

Operating and Electrical	
Input frequency	35000-70000 Hz
Power (Rated) (Nom)	16.5 W
Lamp current (max.)	350 mA

Lamp current (min.)	150 mA
Starting time (nom.)	0.5 s
Warm-up time to 60% light (nom.)	0.5 s
Power factor (nom.)	0.9
Voltage (Nom)	90-130 V

Temperature	
T ambient (max.)	45 °C
T ambient (min.)	-20 °C
T storage (max.)	65 °C
T storage (min.)	-40 °C
T-Case maximum (nom.)	65 °C

Controls and Dimming	
Dimmable	No

Mechanical and Housing	
Product length	1200 mm

MASTER LEDtube InstantFit HF T5

Approval and Application

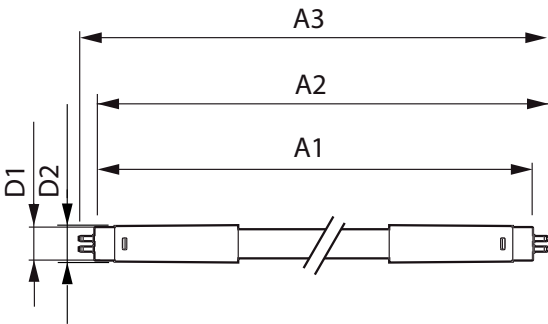
Energy efficiency label (EEL)	A++
Energy-saving product	Yes
Approval marks	CE marking RoHS compliance KEMA Keur certificate
Energy Consumption kWh/1000 h	20 kWh

Product Data

Full product code	871869674333100
-------------------	-----------------

Order product name	MAS LEDtube HF 1200mm HE 16.5W 865 T5
EAN/UPC – product	8718696743331
Order code	929001391202
Numerator – quantity per pack	1
Numerator – packs per outer box	10
Material no. (12NC)	929001391202
Net weight (piece)	0.159 kg

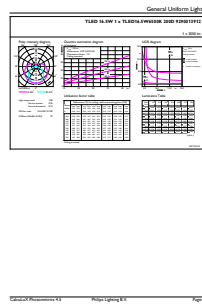
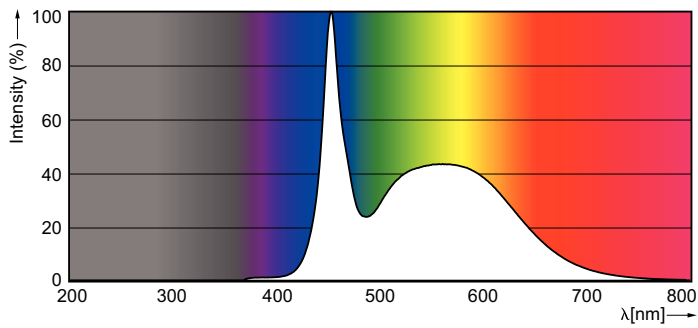
Dimensional drawing



TLED 1200mm 230V14W-28W 2100lm 160D 650

Product	D1	D2	A1	A2	A3
MAS LEDtube HF 1200mm HE 16.5W 865 T5	15.5 mm	18.8 mm	1149 mm	1156.1 mm	1163.2 mm

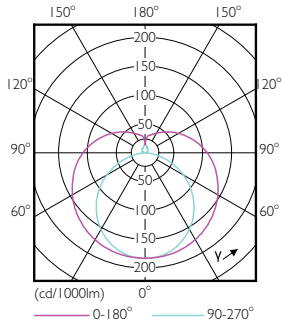
Photometric data



LEDtube 1200mm 16-5W G5 865 2500lm

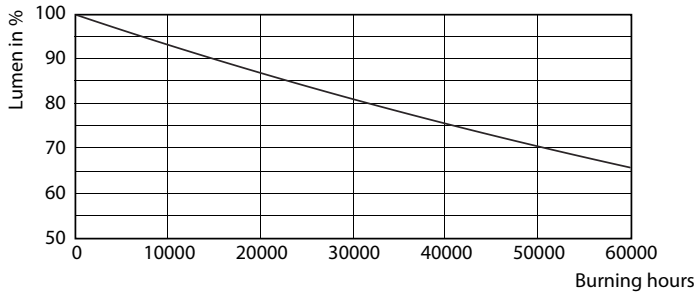
MASTER LEDtube InstantFit HF T5

Photometric data

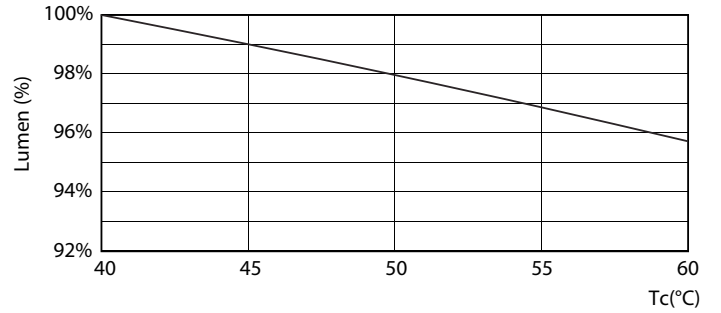


LEDtube 600mm 8W G5 830 1000lm

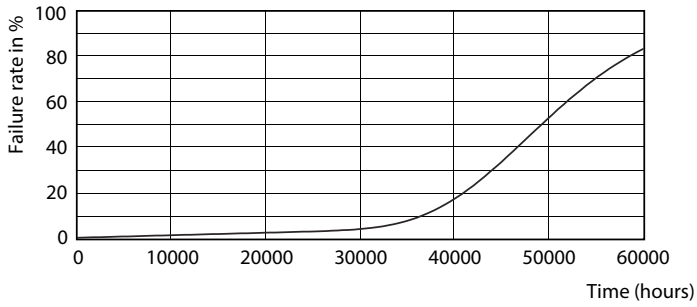
Lifetime



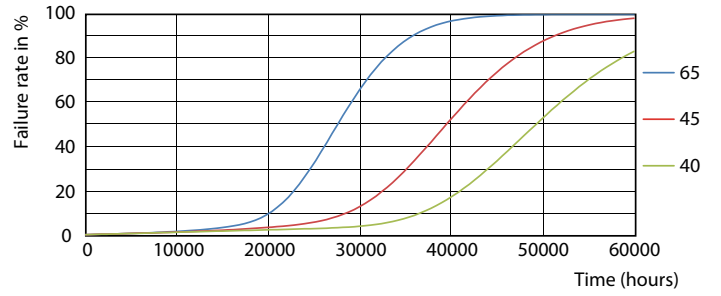
LEDtube 600mm 8W G5 830 1000lm



LEDtube 600mm 8W G5 830 1000lm



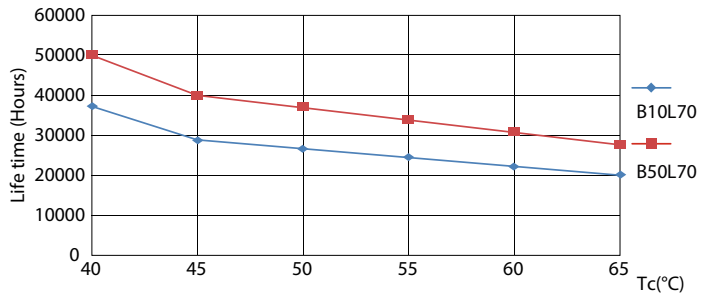
LEDtube 600mm 8W G5 830 1000lm



LEDtube 600mm 8W G5 830 1000lm

MASTER LEDtube InstantFit HF T5

Lifetime



LEDtube 600mm 8W G5 830 1000lm

