



MASTER LEDtube InstantFit HF T5



Master LEDtube HF 1500mm HE 20W 830 T5

The Philips MASTER LEDtube integrates an LED light source into a traditional fluorescent form factor. Its unique design creates a perfectly uniform visual appearance, which cannot be distinguished from traditional fluorescents. These T5 lighting tubes are the right choice for absolute performance and are designed to stand up to everyday conditions. Unparalleled savings, thanks to low energy consumption and an exceptionally long lifetime, make these T5 LED tubes the choice for every demanding applications.

Product data

General Information		LLMF at end of nominal lifetime (nom.)		70 %
Cap base	G5	Photobiological safety according to EN 62471		RG0
Nominal lifetime	60,000 h	Operating and Electrical		
Switching Cycle	50,000	Line Frequency	30K to 100K Hz	
Lighting Technology	LED	Input frequency	30 K to 100 K Hz	
Flux measurement reference	Sphere	Power Consumption	20 W	
CE mark	Yes	Lamp current (max.)	350 mA	
EU RoHS compliant	Yes	Lamp current (min.)	150 mA	
Light Technical		Starting time (nom.)	0.5 s	
Colour Code	830 [CCT of 3000K]	Warm-up time to 60% light	0.5 s	
Beam angle (nom.)	200 degree(s)	Power Factor (Fraction)	0.92	
Luminous Flux	2,800 lm	Voltage (nom.)	80-130 V	
Colour designation	White (WH)	LED alternative to fluorescent lamp power	35 W	
Correlated Colour Temperature	3000 K	Inrush current at mains	-	
Luminous efficacy (rated) (nom.)	140.00 lm/W	Max. lamp no. on MCB B type 10A — Mains	-	
Colour consistency	<6	Max. lamp no. on MCB B type 10A — EM ballast without Comp. Cap.	-	
Colour rendering index (CRI)	80			

MASTER LEDtube InstantFit HF T5

Max. lamp no. on MCB B type 10A — EM ballast with Comp. Cap.	-
Max. lamp no. on MCB B type 16A — Mains	-
Max. lamp no. on MCB B type 16A — EM ballast without Comp. Cap.	-
Max. lamp no. on MCB B type 16A — EM ballast with Comp. Cap.	-
Ballast Compatibility	HF

Temperature

Ambient temperature range	-20°C to 45°C
T-Case maximum (nom.)	65 °C

Controls and Dimming

Dimmable	Yes – Check ballast compatibility
----------	-----------------------------------

Mechanical and Housing

Lamp Finish	Frosted
Bulb material	Glass
Product length	1,500 mm
Bulb shape	T5

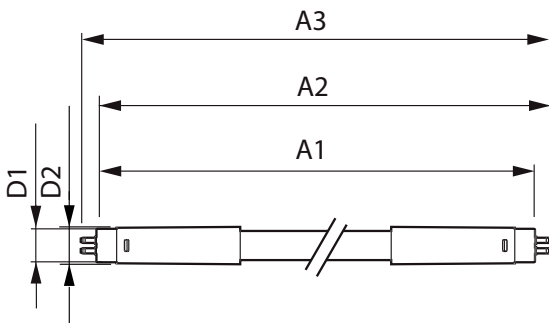
Approval and Application

Energy Efficiency Class	E
Energy-saving product	Yes
Approval marks	RoHS compliance TUV CE marking KEMA Keur certificate
Energy consumption kWh/1,000 hours	20 kWh
EPREL registration number	1384137

Product Data

Order product name	MAS LEDtube HF 1500mm HE 20W 830 T5
Full product name	Master LEDtube HF 1500mm HE 20W 830 T5
Full EOC	871869674335500
Order code	74335500
Material no. (12 NC)	929001391302
SAP numerator – quantity per pack	1
EAN/UPC – Product/Case	8718696743355
Numerator – packs per outer box	10
EAN/UPC - Case	8718696743362

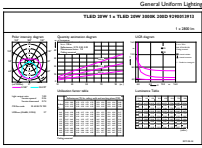
Dimensional drawing



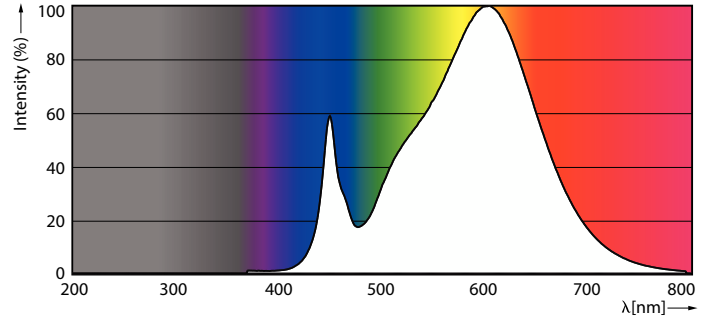
Product	D1	D2	A1	A2	A3
MAS LEDtube HF 1500mm HE 20W 830 T5	15.5 mm	18.8 mm	1,449 mm	1,456.1 mm	1,463.2 mm

MASTER LEDtube InstantFit HF T5

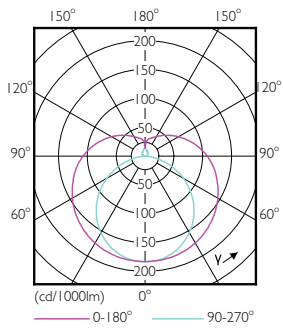
Photometric data



General uniform lighting - MAS LEDtube HF 1500mm HE 20W 830 T5

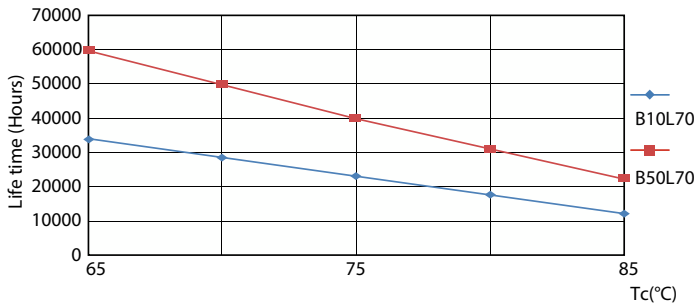


Spectral Power Distribution Colour - MAS LEDtube HF 1500mm HE 20W 830 T5

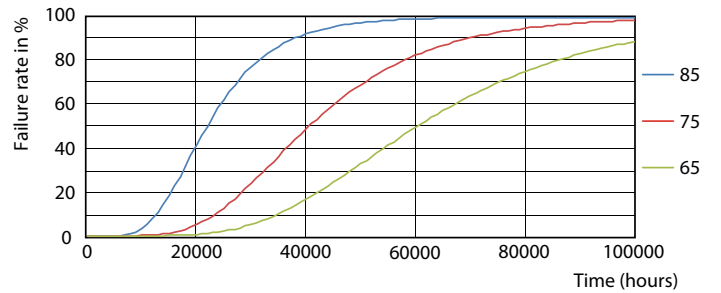


Light Distribution Diagram - MAS LEDtube HF 1500mm HE 20W 830 T5

Lifetime



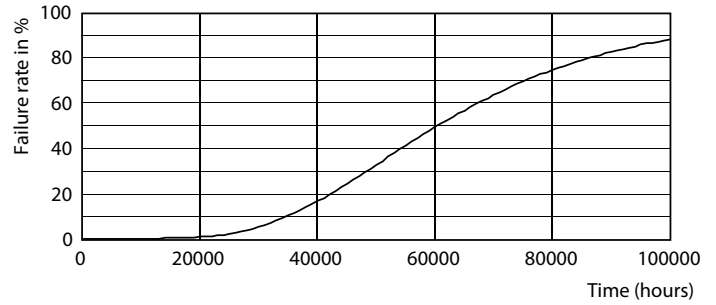
Life Expectancy Diagram - MAS LEDtube HF 1500mm HE 20W 830 T5



Life Expectancy Diagram - MAS LEDtube HF 1500mm HE 20W 830 T5

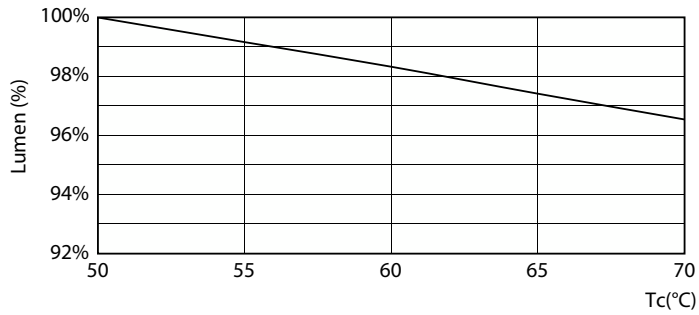
MASTER LEDtube InstantFit HF T5

Lifetime



Lumen Maintenance Diagram - MAS LEDtube HF 1500mm HE 20W 830 T5

Life Expectancy Diagram - MAS LEDtube HF 1500mm HE 20W 830 T5



Lumen Maintenance Diagram - MAS LEDtube HF 1500mm HE 20W 830 T5

