

# MASTER LEDtube InstantFit HF T8

## MASTER LEDtube HF 600mm HO 8W830 T8

The Philips MASTER LEDtube integrates a LED light source into a traditional fluorescent form factor. Its unique design creates a perfectly uniform visual appearance which cannot be distinguished from traditional fluorescent. This product is the ideal solution for up lighting in general lighting applications.

### Product data

General Information	
Cap base	G13 [ Medium Bi-Pin Fluorescent]
Nominal lifetime (nom.)	60000 h
Switching cycle	50000X
B50L70	60000 h
Light Technical	
Colour Code	830 [ CCT of 3,000 K]
Technical Beam Angle (Nom)	160 °
Lamp Luminous Flux 25°C EL (Nom)	1000 lm
Lamp Luminous Flux (Nom)	1000 lm
Rated beam angle	160 °
Colour Temperature, horizontal (Nom)	3000 K
Colour consistency	<6
Colour Rendering Index,horiz (Nom)	83
LLMF at end of nominal lifetime (nom.)	70 %
Operating and Electrical	
Input frequency	20000-80000 Hz
Power (Rated) (Nom)	8 W

Lamp current (max.)	500 mA
Lamp current (min.)	150 mA
Starting time (nom.)	0.5 s
Warm-up time to 60% light (nom.)	0.5 s
Power factor (nom.)	0.9
Voltage (Nom)	20-50 V
Temperature	
T ambient (max.)	45 °C
T ambient (min.)	-20 °C
T storage (max.)	65 °C
T storage (min.)	-40 °C
T-Case maximum (nom.)	60 °C
Controls and Dimming	
Dimmable	No
Mechanical and Housing	
Product length	600 mm

# MASTER LEDtube InstantFit HF T8

## Approval and Application

Energy efficiency label (EEL)	A+
Energy-saving product	Yes
Approval marks	RoHS compliance CE marking KEMA Keur certificate
Energy Consumption kWh/1000 h	10 kWh

## Product Data

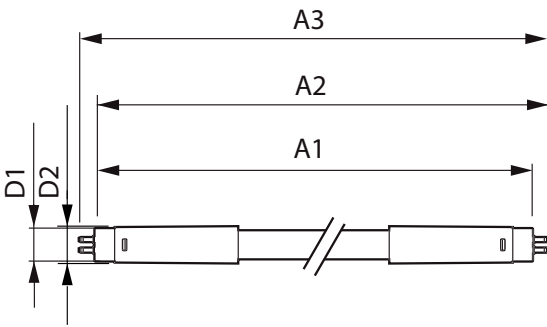
Full product code	871869674353900
-------------------	-----------------

Order product name	MASTER LEDtube HF 600mm HO 8W830 T8
EAN/UPC – product	8718696743539
Order code	929001393102
Numerator – quantity per pack	1
Numerator – packs per outer box	10
Material no. (12NC)	929001393102
Net weight (piece)	0.160 kg

## Warnings and Safety

- NOTES: The overall energy efficiency and light distribution of any installation that uses these lamps are determined by the design of the installation.

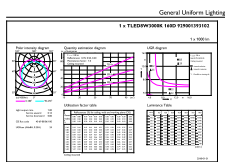
## Dimensional drawing



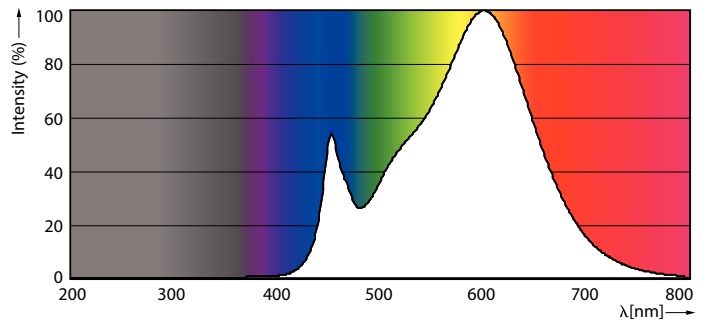
MAS LEDtube HF 600mm 10.5W830 T8

Product	D1	D2	A1	A2	A3
MASTER LEDtube HF 600mm HO 8W830 T8	25.6 mm	28 mm	588.6 mm	595.7 mm	602.8 mm

## Photometric data



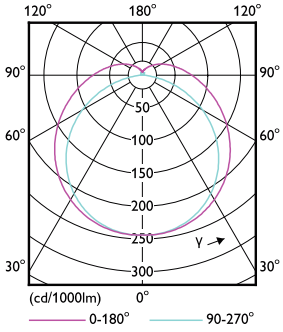
8W G13 830 3000K



8W G13

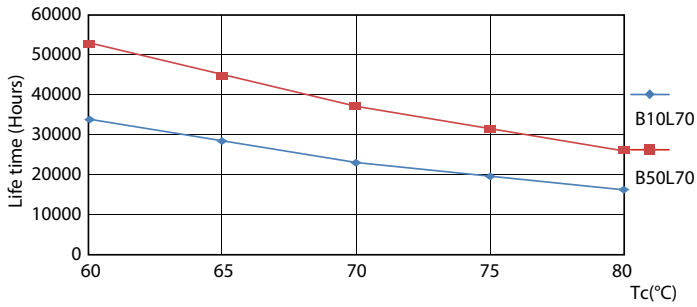
# MASTER LEDtube InstantFit HF T8

## Photometric data

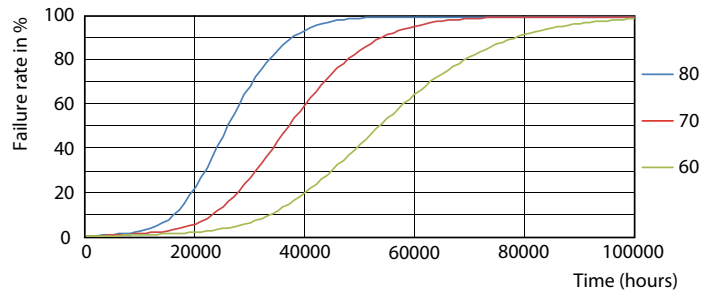


8W G13 830 3000K

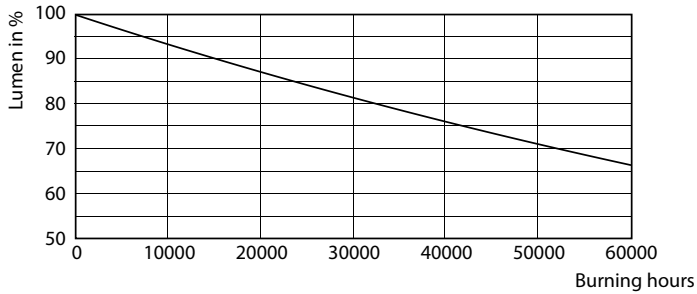
## Lifetime



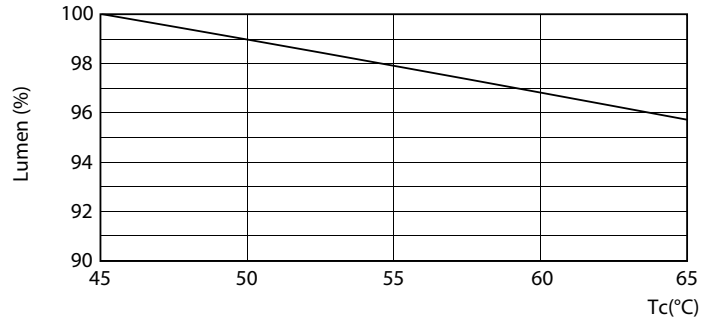
8W G13



8W G13



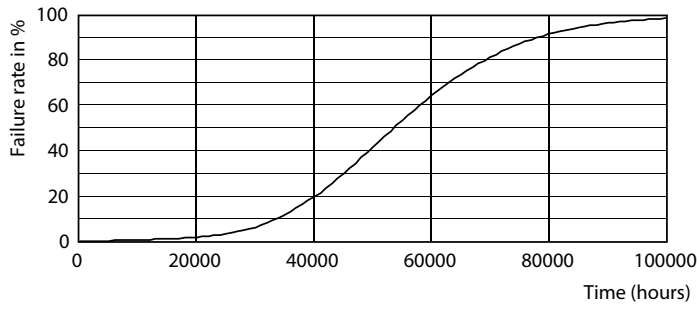
8W G13



8W G13

# MASTER LEDtube InstantFit HF T8

## Lifetime



8W G13

