



MASTER LEDtube InstantFit HF T8



MASTER LEDtube HF 600mm HO 8W840 T8

The Philips MASTER LEDtube integrates a LED light source into a traditional fluorescent form factor. Its unique design creates a perfectly uniform visual appearance which cannot be distinguished from traditional fluorescent. The MASTER LEDtube Performance is the ideal solution for customers which have higher light requirements and the want to maximize value over lifetime.(need the longest lifetime). Full energy savings and TCO benefits.

Warnings and Safety

- NOTES: The overall energy efficiency and light distribution of any installation that uses these lamps are determined by the design of the installation.

Product data

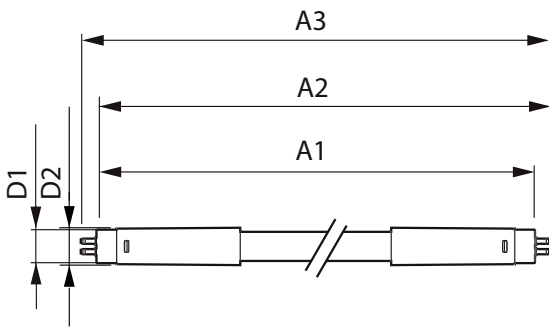
General Information		Operating and Electrical	
Cap-Base	G13 ROT (Rotating) [Medium Bi-Pin Fluorescent]	Correlated Color Temperature (Nom)	4000 K
Nominal lifetime	60,000 hour(s)	Luminous Efficacy (rated) (Nom)	131.00 lm/W
Switching Cycle	50,000	Color Consistency	<6
Lighting Technology	LED	Color rendering index (CRI)	83
Flux measurement reference	Sphere	LLMF At End Of Nominal Lifetime (Nom)	70 %
CE mark	Yes	Line Frequency	20000-80000 Hz
EU RoHS compliant	Yes	Input Frequency	20000-80000 Hz
Color Code	840 [CCT of 4000K]	Power Consumption	8 W
Beam Angle (Nom)	160 degree(s)	Lamp Current (Max)	500 mA
Luminous Flux	1,050 lm	Lamp Current (Min)	150 mA
Color Designation	Cool White (CW)	Starting Time (Nom)	0.5 s
		Warm-up time to 60% light	0.5 s
		Power Factor (Fraction)	0.9

MASTER LEDtube InstantFit HF T8

Voltage (Nom)	20-50 V
Temperature	
Ambient temperature range	-20 °C to 45 °C
T-Case Maximum (Nom)	60 °C
Controls and Dimming	
Dimmable	No
Mechanical and Housing	
Bulb Material	Plastic
Product Length	600 mm
Bulb Shape	T8
Approval and Application	
Energy Efficiency Class	E
Energy Saving Product	Yes

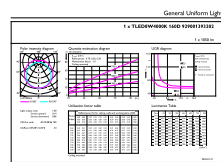
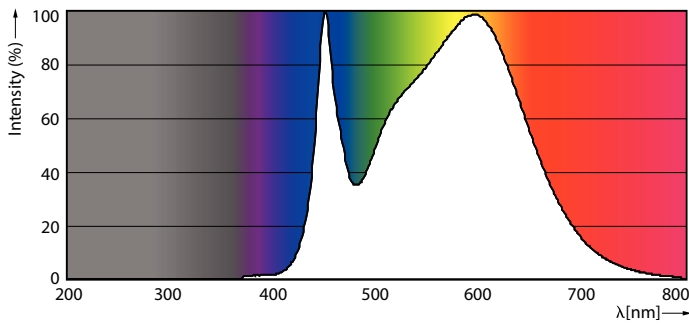
Approval Marks	RoHS compliance TUV CE marking KEMA Keur certificate
Energy Consumption kWh/1000 h	8 kWh
EPREL Registration Number	1597257
Product Data	
Order product name	MAS LEDtube HF 600mm HO 8W840 T8
Full product name	MASTER LEDtube HF 600mm HO 8W840 T8
Full product code	871869674355300
Order code	74355300
Material Nr. (12NC)	929001393202
Numerator - Quantity Per Pack	1
EAN/UPC - Product/Case	8718696743553
Numerator - Packs per outer box	10
EAN/UPC - Case	8718696743560

Dimensional drawing



Product	D1	D2	A1	A2	A3
MAS LEDtube HF 600mm HO 8W840 T8	25.8 mm	28 mm	588.6 mm	595.7 mm	602.8 mm

Photometric data

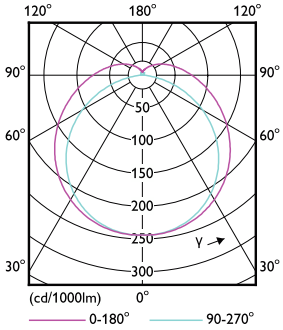


Spectral Power Distribution Colour - MAS LEDtube HF 600mm HO 8W840 T8

General uniform lighting - MAS LEDtube HF 600mm HO 8W840 T8

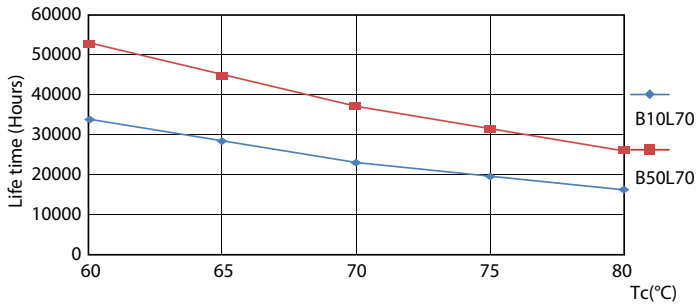
MASTER LEDtube InstantFit HF T8

Photometric data

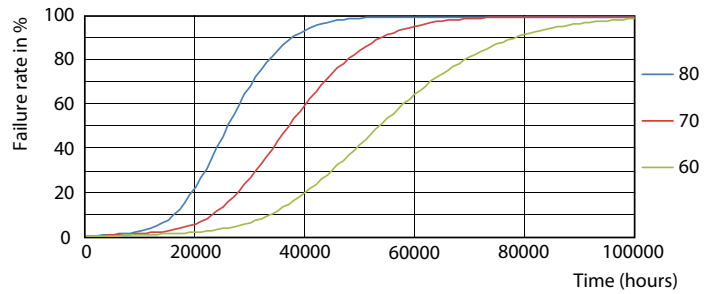


Light Distribution Diagram - MAS LEDtube HF 600mm HO 8W840 T8

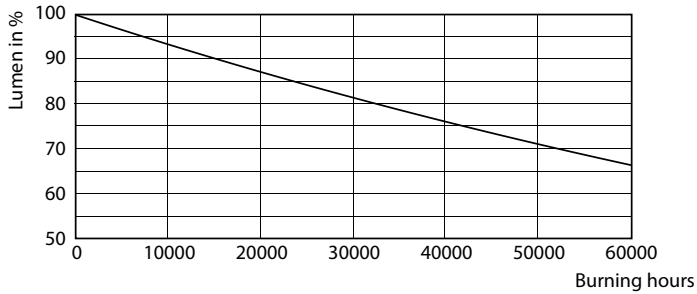
Lifetime



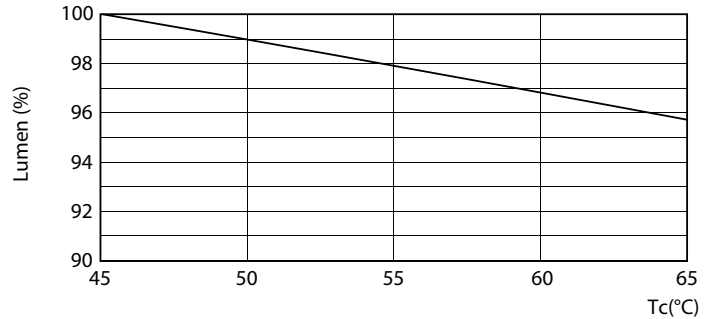
Life Expectancy Diagram - MAS LEDtube HF 600mm HO 8W840 T8



Life Expectancy Diagram - MAS LEDtube HF 600mm HO 8W840 T8



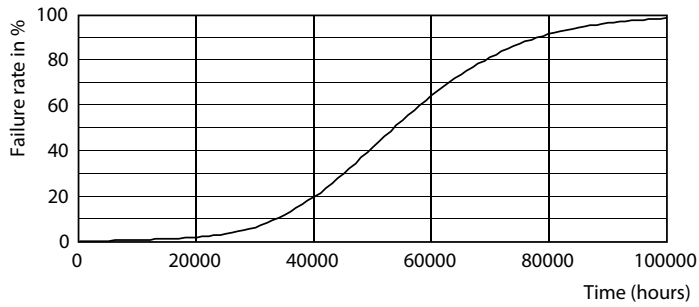
Lumen Maintenance Diagram - MAS LEDtube HF 600mm HO 8W840 T8



Lumen Maintenance Diagram - MAS LEDtube HF 600mm HO 8W840 T8

MASTER LEDtube InstantFit HF T8

Lifetime



Life Expectancy Diagram - MAS LEDtube HF 600mm HO 8W840 T8

