



MASTER LEDtube InstantFit HF

MASTER LEDtube HF 600mm HO 8W840 T8

The Philips MASTER LEDtube integrates a LED light source into a traditional fluorescent form factor. Its unique design creates a perfectly uniform visual appearance which cannot be distinguished from traditional fluorescent. This product is the ideal solution for up lighting in general lighting applications.

Product data

General Information		Lamp current (max.)		500 mA	
Cap base	G13 [Medium Bi-Pin Fluorescent]	Lamp current (min.)	150 mA		
Nominal lifetime (nom.)	60000 h	Starting time (nom.)	0.5 s		
Switching cycle	50000X	Warm-up time to 60% light (nom.)	0.5 s		
B50L70	60000 h	Power factor (nom.)	0.9		
Voltage (Nom)		20-50 V			
Light Technical		Temperature			
Colour code	840 [CCT of 4,000 K]	T ambient (max.)	45 °C		
Beam Angle (Nom)	160 °	T ambient (min.)	-20 °C		
Luminous flux (nom.)	1050 lm	T storage (max.)	65 °C		
Luminous flux (rated) (nom.)	1050 lm	T storage (min.)	-40 °C		
Rated beam angle	160 °	T-Case maximum (nom.)	60 °C		
Correlated colour temperature (nom.)	4000 K	Controls and Dimming			
Colour consistency	<6	Dimmable	No		
Color rendering index (nom.)	83	Mechanical and Housing			
LLMF at end of nominal lifetime (nom.)	70 %	Product length	600 mm		
Operating and Electrical					
Input frequency	20000-80000 Hz				
Power (Rated) (Nom)	8 W				

MASTER LEDtube InstantFit HF

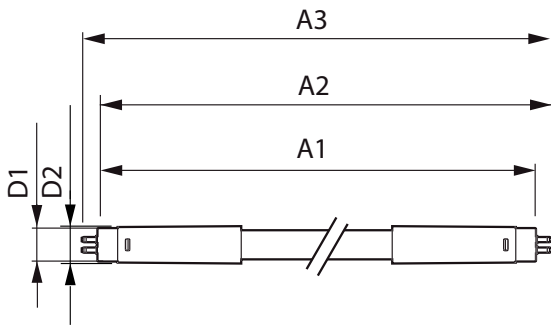
Approval and Application	
Energy efficiency label (EEL)	A+
Energy-saving product	Yes
Approval marks	RoHS compliance CE marking KEMA Keur certificate
Energy Consumption kWh/1000 h	10 kWh
Product Data	
Full product code	871869674355300

Order product name	MASTER LEDtube HF 600mm HO 8W840 T8
EAN/UPC – product	8718696743553
Order code	74355300
Numerator – quantity per pack	1
Numerator – packs per outer box	10
Material no. (12NC)	929001393202
Net weight (piece)	0.160 kg

Warnings and Safety

- NOTES: The overall energy efficiency and light distribution of any installation that uses these lamps are determined by the design of the installation.

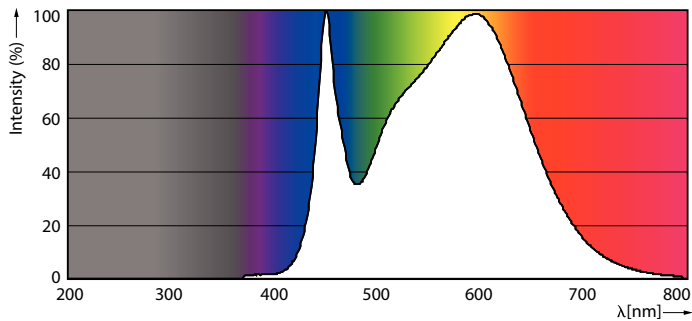
Dimensional drawing



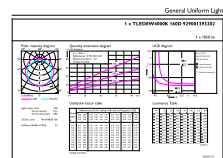
MAS LEDtube HF 600mm 10.5W840 T8

Product	D1	D2	A1	A2	A3
MASTER LEDtube HF 600mm HO 8W840 T8	25.6 mm	28 mm	588.6 mm	595.7 mm	602.8 mm

Photometric data



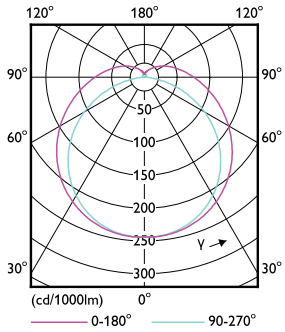
8W G13



8W G13 840 4000K

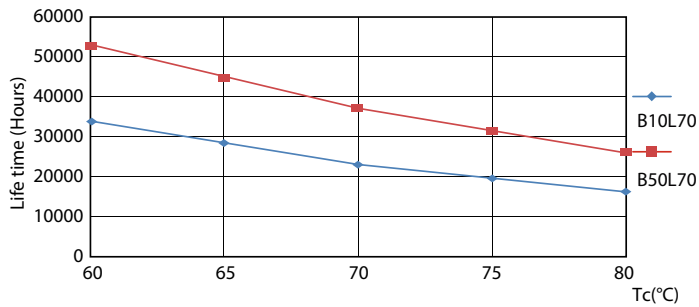
MASTER LEDtube InstantFit HF

Photometric data

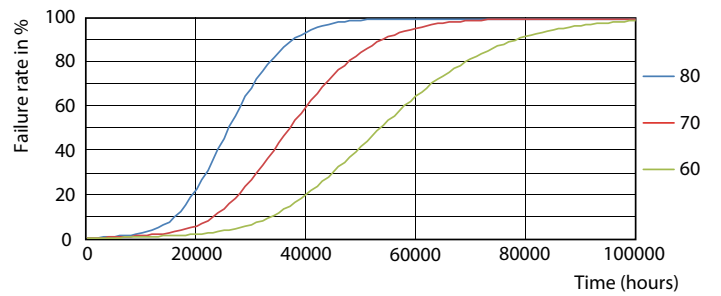


8W G13 830 3000K

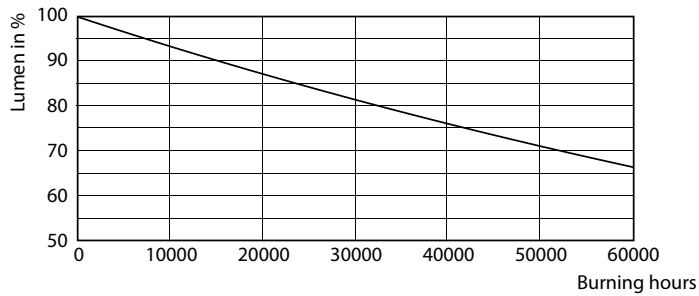
Lifetime



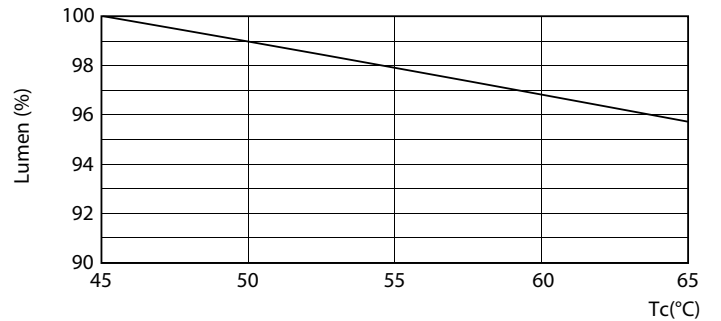
8W G13



8W G13



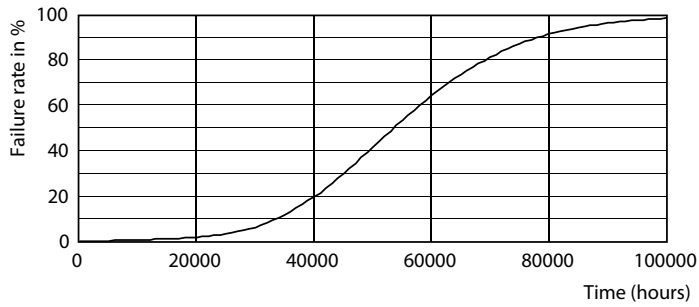
8W G13



8W G13

MASTER LEDtube InstantFit HF

Lifetime



8W G13

