

# MASTER LEDtube InstantFit HF T8

## MASTER LEDtube HF 600mm HO 8W865 T8

The Philips MASTER LEDtube integrates a LED light source into a traditional fluorescent form factor. Its unique design creates a perfectly uniform visual appearance which cannot be distinguished from traditional fluorescent. This product is the ideal solution for up lighting in general lighting applications.

### Product data

| General Information                    |                                  |
|--|----------------------------------|
| Cap base                               | G13 [ Medium Bi-Pin Fluorescent] |
| Nominal lifetime (nom.)                | 60000 h                          |
| Switching cycle                        | 50000X                           |
| B50L70                                 | 60000 h                          |
| Light Technical                        |                                  |
| Colour Code                            | 865 [ CCT of 6,500 K]            |
| Technical Beam Angle (Nom)             | 160 °                            |
| Lamp Luminous Flux 25°C EL (Nom)       | 1050 lm                          |
| Lamp Luminous Flux (Nom)               | 1050 lm                          |
| Rated beam angle                       | 160 °                            |
| Colour Temperature, horizontal (Nom)   | 6500 K                           |
| Colour consistency                     | <6                               |
| Colour Rendering Index,horiz (Nom)     | 83                               |
| LLMF at end of nominal lifetime (nom.) | 70 %                             |
| Operating and Electrical               |                                  |
| Input frequency                        | 20000-80000 Hz                   |
| Power (Rated) (Nom)                    | 8 W                              |

| Lamp current (max.)              | 500 mA  |
|----------------------------------|---------|
| Lamp current (min.)              | 150 mA  |
| Starting time (nom.)             | 0.5 s   |
| Warm-up time to 60% light (nom.) | 0.5 s   |
| Power factor (nom.)              | 0.9     |
| Voltage (Nom)                    | 20-50 V |
| Temperature                      |         |
| T ambient (max.)                 | 45 °C   |
| T ambient (min.)                 | -20 °C  |
| T storage (max.)                 | 65 °C   |
| T storage (min.)                 | -40 °C  |
| T-Case maximum (nom.)            | 60 °C   |
| Controls and Dimming             |         |
| Dimmable                         | No      |
| Mechanical and Housing           |         |
| Product length                   | 600 mm  |

# MASTER LEDtube InstantFit HF T8

## Approval and Application

|                               |  |
|-------------------------------|--|
| Energy efficiency label (EEL) | A+   |
| Energy-saving product         | Yes  |
| Approval marks                | RoHS compliance CE marking KEMA Keur certificate |
| Energy Consumption kWh/1000 h | 10 kWh   |

## Product Data

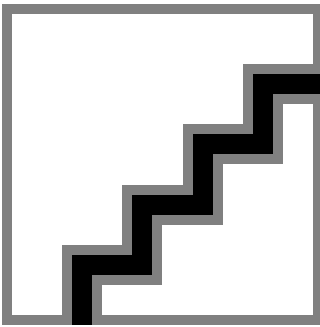
|                   |                 |
|-------------------|-----------------|
| Full product code | 871869674367600 |
|-------------------|-----------------|

|                                 |                                     |
|---------------------------------|-------------------------------------|
| Order product name              | MASTER LEDtube HF 600mm HO 8W865 T8 |
| EAN/UPC – product               | 8718696743676                       |
| Order code                      | 929001393302                        |
| Numerator – quantity per pack   | 1                                   |
| Numerator – packs per outer box | 10                                  |
| Material no. (12NC)             | 929001393302                        |
| Net weight (piece)              | 0.160 kg                            |

## Warnings and Safety

- NOTES: The overall energy efficiency and light distribution of any installation that uses these lamps are determined by the design of the installation.

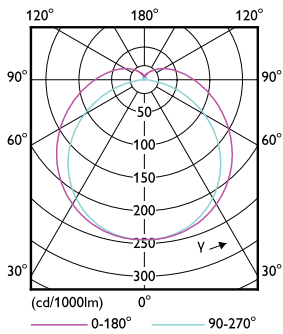
## Dimensional drawing



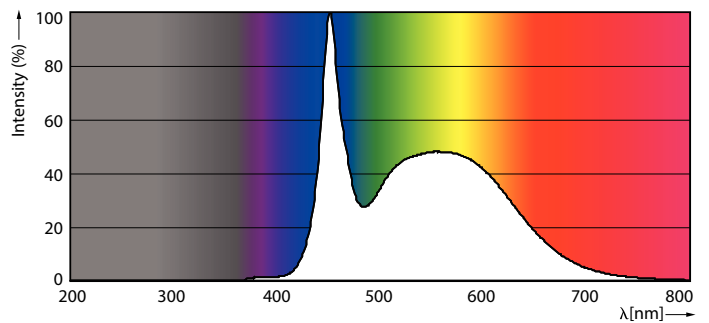
MAS LEDtube HF 600mm 10.5W865 T8

| Product                                | D1      | D2    | A1       | A2       | A3       |
|--|---------|-------|----------|----------|----------|
| MASTER LEDtube HF<br>600mm HO 8W865 T8 | 25.6 mm | 28 mm | 588.6 mm | 595.7 mm | 602.8 mm |

## Photometric data



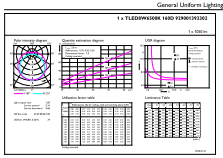
8W G13 830 3000K



8W G13

# MASTER LEDtube InstantFit HF T8

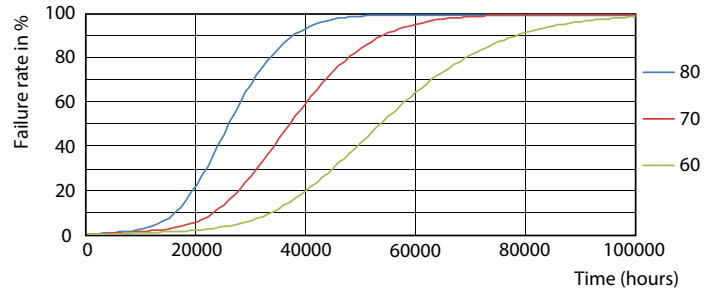
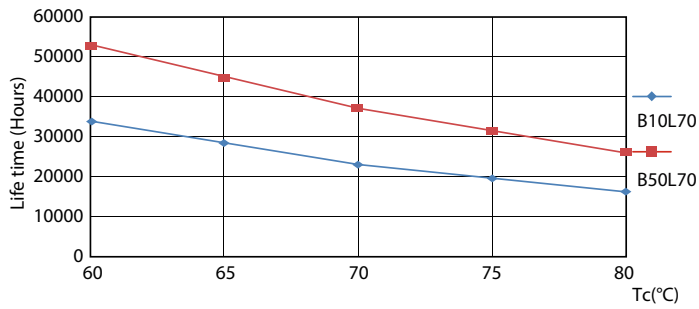
## Photometric data



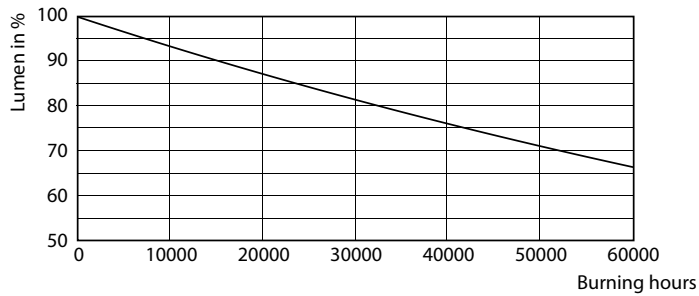
Calculations: Page 11 of 11

### 8W G13 865 6500K

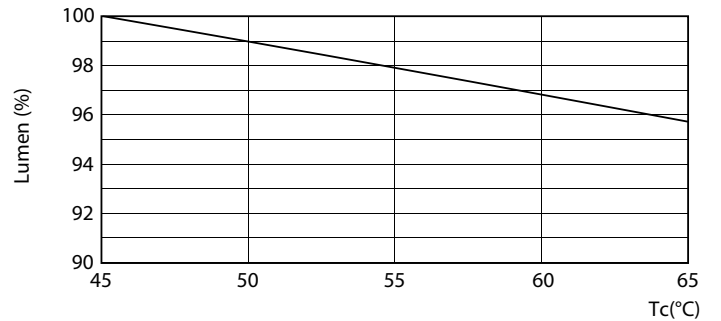
## Lifetime



### 8W G13



### 8W G13

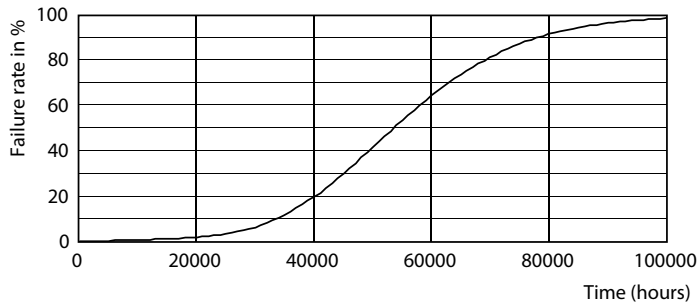


### 8W G13

### 8W G13

# MASTER LEDtube InstantFit HF T8

## Lifetime



8W G13

