



# T8

## 10T8 LED/48-2700 IF 1PK 10/1

Our TLEDs are available in InstantFit (Type A / Type C) or MainsFit (Ballast bypass / Type B) versions. The InstantFit lamps work on a broad variety of ballasts and LED drivers. Only InstantFit has over 15,000 lamp & ballast combinations delivering even light output, energy savings and a long lifetime. Our MainsFit products feature a double-ended design, simplifying installation while a proprietary safety circuit minimizes a shock risk. Lamp sizes range from 2-foot to 8-foot and U-bend with a variety of lumen outputs.

### Product data

General Information	
Base	G13 [ Medium Bi-Pin Fluorescent]
EU RoHS compliant	Yes
Nominal Lifetime (Nom)	70000 h
Switching Cycle	50000X
Light Technical	
Color Code	827 [ CCT of 2700K]
Beam Angle (Nom)	240 °
Initial lumen (Nom)	1400 lm
Color Designation	Warm White (WW)
Correlated Color Temperature (Nom)	2700 K
Luminous Efficacy (rated) (Nom)	140.00 lm/W
Color Consistency	<6
Color Rendering Index (Nom)	82
LLMF At End Of Nominal Lifetime (Nom)	70 %
Operating and Electrical	
Input Frequency	20000-120000 Hz
Power (Rated) (Nom)	10 W

Lamp Current (Max)	340 mA
Lamp Current (Min)	110 mA
Starting Time (Nom)	0.5 s
Warm Up Time to 60% Light (Nom)	0.5 s
Power Factor (Nom)	0.9
Voltage (Nom)	120-277V; 347 V

Temperature	
T-Ambient (Max)	45 °C
T-Ambient (Min)	-20 °C
T-Storage (Max)	65 °C
T-Storage (Min)	-40 °C
T-Case Maximum (Nom)	50 °C

Controls and Dimming	
Dimmable	No

Mechanical and Housing	
Product Length	48 in

# T8

## Approval and Application

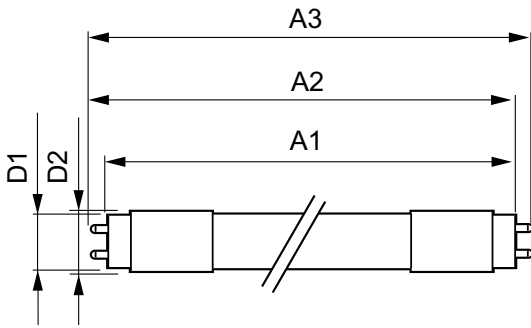
Energy Efficiency Label (EEL)	Not applicable
Energy Saving Product	Yes
Approbation Marks	UL certificate RoHS compliance
Energy Consumption kWh/1000 h	- kWh

## Product Data

Order product name	10T8 LED/48-2700 IF 1PK 10/1
EAN/UPC - Product	046677473969

Order code	473966
Numerator - Quantity Per Pack	1
Numerator - Packs per outer box	10
Material Nr. (12NC)	929001397104
Net Weight (Piece)	0.230 kg
Model Number	9290013971

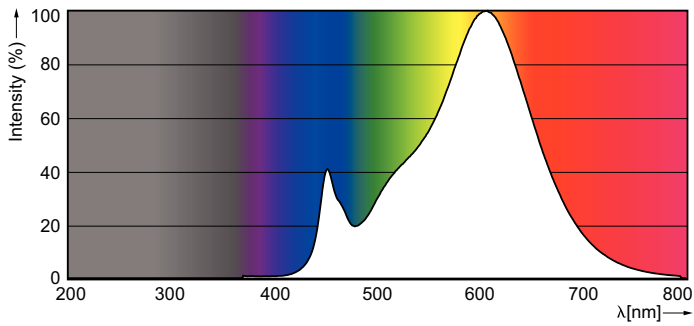
## Dimensional drawing



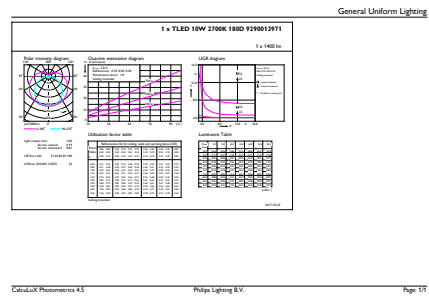
TLED 1200mm 120V 10-32W 1400lm 2700K G13

Product	D1	D2	A1	A2	A3
10T8 LED/48-2700 IF 1PK 10/1	25.7 mm	26.3 mm	1198.1 mm	1205.2 mm	1212.3 mm
10/1					

## Photometric data

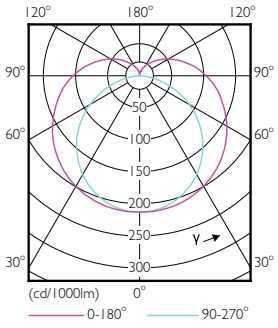


LEDtube 1200mm 10-32W G13 T8 827 1400lm



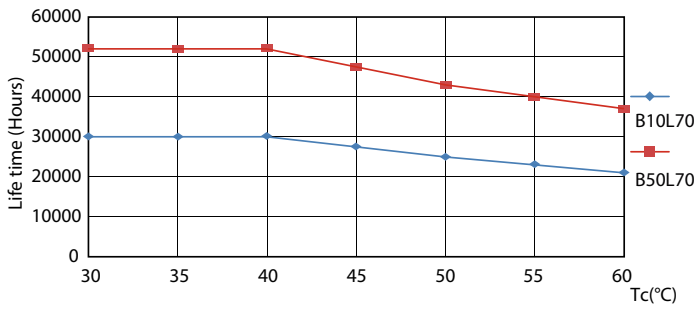
LEDtube 10W G13 827 IF 1PK

Photometric data

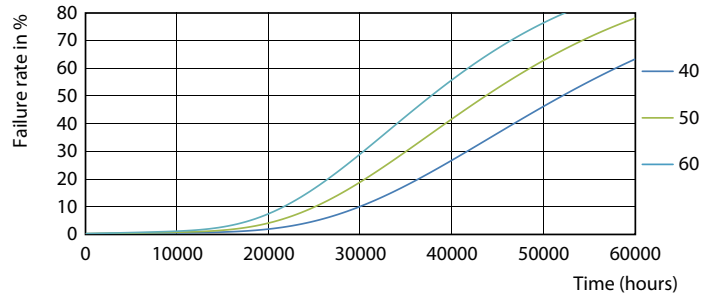


LEDtube 10W G13 827 IF 1PK

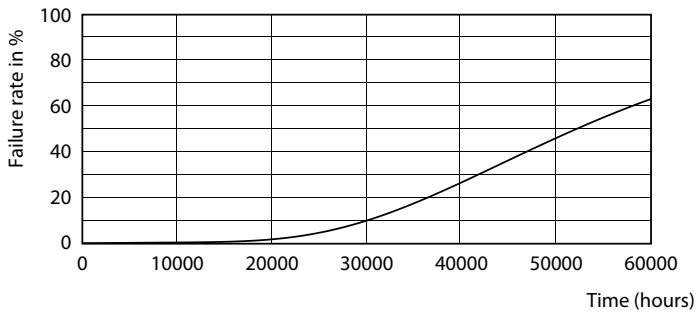
Lifetime



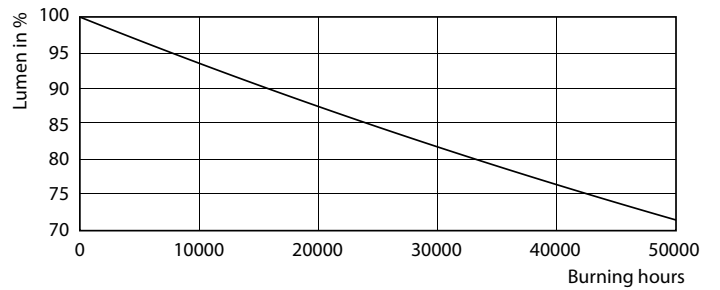
LEDtube 10W G13 827-850 IF 1PK



LEDtube 10W G13 827-850 IF 1PK



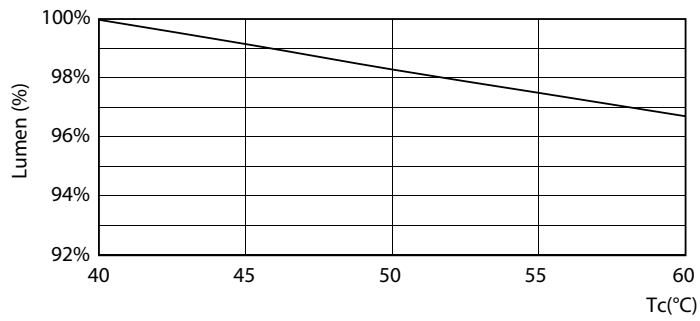
LEDtube 10W G13 827-850 IF 1PK



LEDtube 10W G13 827-850 IF 1PK

## T8

### Lifetime



LEDtube 10W G13 827-850 IF 1PK

