

T8

10T8 LED/48-2700 IF 1PK 10/1

Our TLEDs are available in InstantFit (Type A / Type C) or MainsFit (Ballast bypass / Type B) versions. The InstantFit lamps work on a broad variety of ballasts and LED drivers. Only InstantFit has over 15,000 lamp & ballast combinations delivering even light output, energy savings and a long lifetime. Our MainsFit products feature a double-ended design, simplifying installation while a proprietary safety circuit minimizes a shock risk. Lamp sizes range from 2-foot to 8-foot and U-bend with a variety of lumen outputs.

Product data

General Information	
Cap-Base	G13 [Medium Bi-Pin Fluorescent]
Nominal lifetime	70,000 hour(s)
Switching Cycle	50,000
Lighting Technology	LED
EU RoHS compliant	Yes
Light Technical	
Color Code	827 [CCT of 2700K]
Beam Angle (Nom)	240 degree(s)
Luminous Flux	1,400 lm
Color Designation	Warm White (WW)
Correlated Color Temperature (Nom)	2700 K
Luminous Efficacy (rated) (Nom)	140.00 lm/W
Color Consistency	<6
Color rendering index (CRI)	82
LLMF At End Of Nominal Lifetime (Nom)	70 %
Operating and Electrical	
Line Frequency	20000-120000 Hz

Input Frequency	20000-120000 Hz
Power Consumption	10 W
Lamp Current (Max)	340 mA
Lamp Current (Min)	110 mA
Starting Time (Nom)	0.5 s
Warm-up time to 60% light	0.5 s
Power Factor (Fraction)	0.9
Voltage (Nom)	120-277V; 347 V
Temperature	
Ambient temperature range	-20 °C to 45 °C
T-Case Maximum (Nom)	50 °C
Controls and Dimming	
Dimmable	No
Mechanical and Housing	
Product Length	1,200 mm
Bulb Shape	Tube, double-ended

Approval and Application

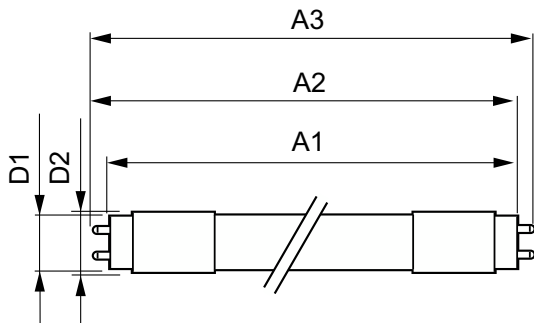
Energy Saving Product	Yes
Approval Marks	UL certificate RoHS compliance
Energy Consumption kWh/1000 h	- kWh

Product Data

Order product name	10T8 LED/48-2700 IF 1PK 10/1
Full product name	10T8 LED/48-2700 IF 1PK 10/1

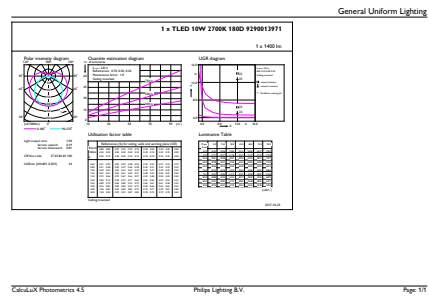
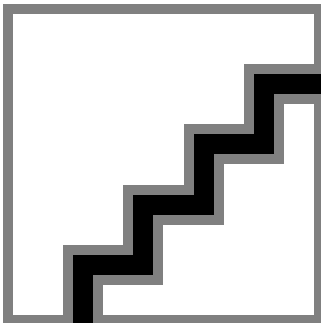
Order code	929001397104
Material Nr. (12NC)	929001397104
Numerator - Quantity Per Pack	1
EAN/UPC - Product/Case	046677473969
Numerator - Packs per outer box	10
EAN/UPC - Case	50046677473964

Dimensional drawing



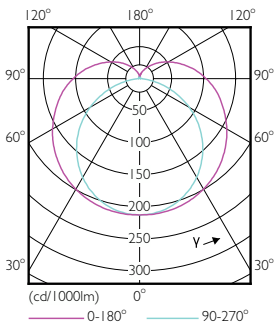
Product	D1	D2	A1	A2	A3
10T8 LED/48-2700 IF 1PK 10/1	25.7 mm	26.3 mm	1,198.1 mm	1,205.2 mm	1,212.3 mm

Photometric data



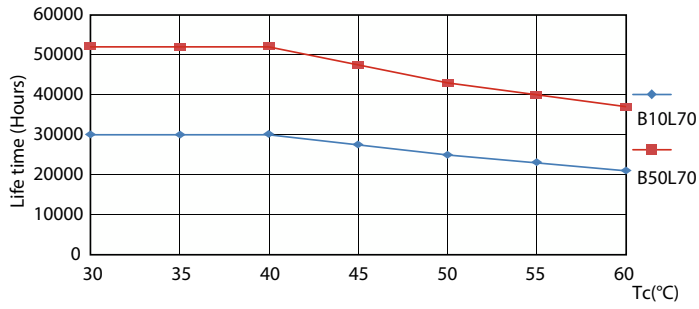
Spectral Power Distribution Colour - 10T8 LED/48-2700 IF 1PK 10/1

General uniform lighting - 10T8 LED/48-2700 IF 1PK 10/1

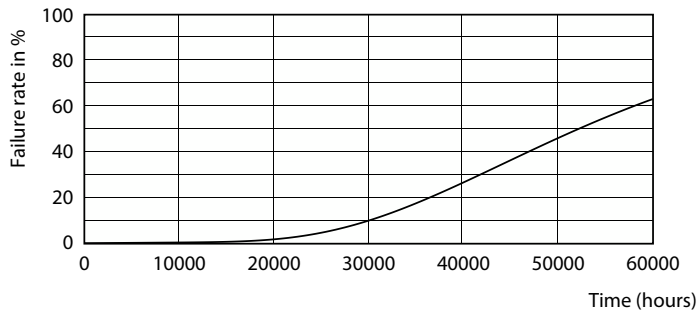


Light Distribution Diagram - 10T8 LED/48-2700 IF 1PK 10/1

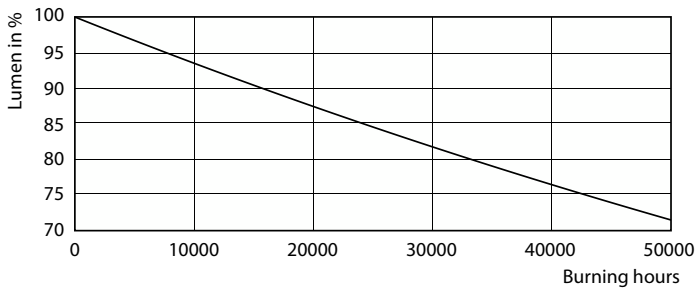
Lifetime



Life Expectancy Diagram - 10T8 LED/48-2700 IF 1PK 10/1

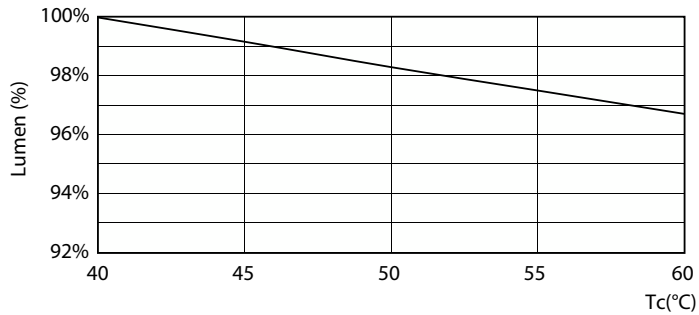


Life Expectancy Diagram - 10T8 LED/48-2700 IF 1PK 10/1



Life Expectancy Diagram - 10T8 LED/48-2700 IF 1PK 10/1

Lumen Maintenance Diagram - 10T8 LED/48-2700 IF 1PK 10/1



Lumen Maintenance Diagram - 10T8 LED/48-2700 IF 1PK 10/1

