

T8

13T8 LED/48-3500 IF DIM 1PK 10/1

Our TLEDs are available in InstantFit (Type A / Type C) or MainsFit (Ballast bypass / Type B) versions. The InstantFit lamps work on a broad variety of ballasts and LED drivers. Only InstantFit has over 15,000 lamp & ballast combinations delivering even light output, energy savings and a long lifetime. Our MainsFit products feature a double-ended design, simplifying installation while a proprietary safety circuit minimizes a shock risk. Lamp sizes range from 2-foot to 8-foot and U-bend with a variety of lumen outputs.

Product data

General Information	
Cap-Base	G13 [Medium Bi-Pin Fluorescent]
Nominal lifetime	70,000 hour(s)
Switching Cycle	50,000
Lighting Technology	LED
EU RoHS compliant	Yes
Light Technical	
Color Code	835 [CCT of 3500K]
Beam Angle (Nom)	180 degree(s)
Luminous Flux	2,000 lm
Color Designation	White (WH)
Correlated Color Temperature (Nom)	3500 K
Luminous Efficacy (rated) (Nom)	153.85 lm/W
Color Consistency	<6
Color rendering index (CRI)	82
LLMF At End Of Nominal Lifetime (Nom)	70 %
Operating and Electrical	
Line Frequency	20000-120000 Hz

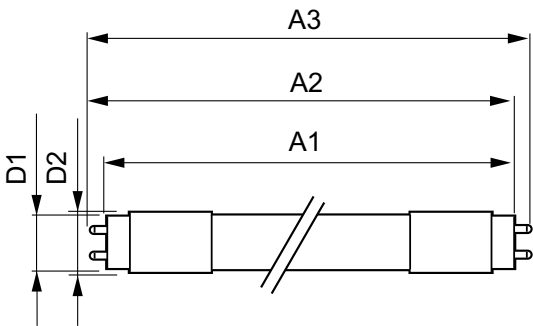
Input Frequency	20000-120000 Hz
Power Consumption	13 W
Lamp Current (Max)	400 mA
Lamp Current (Min)	130 mA
Starting Time (Nom)	0.5 s
Warm-up time to 60% light	0.5 s
Power Factor (Fraction)	0.9
Voltage (Nom)	120-277V; 347 V
Temperature	
Ambient temperature range	-20 °C to 45 °C
T-Case Maximum (Nom)	50 °C
Controls and Dimming	
Dimmable	Yes
Mechanical and Housing	
Product Length	1,200 mm
Bulb Shape	T8

Approval and Application	
Energy Saving Product	Yes
Approval Marks	UL certificate RoHS compliance DLC compliance
Energy Consumption kWh/1000 h	- kWh

Product Data	
Order product name	13T8 LED/48-3500 IF DIM 1PK 10/1
Full product name	13T8 LED/48-3500 IF DIM 1PK 10/1

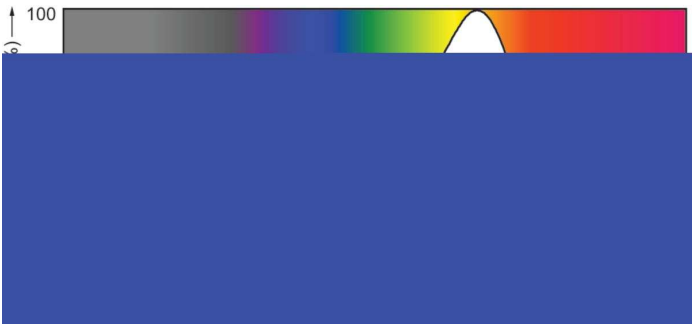
Order code	929001397704
Material Nr. (12NC)	929001397704
Numerator - Quantity Per Pack	1
EAN/UPC - Product/Case	046677473938
Numerator - Packs per outer box	10
EAN/UPC - Case	50046677473933

Dimensional drawing

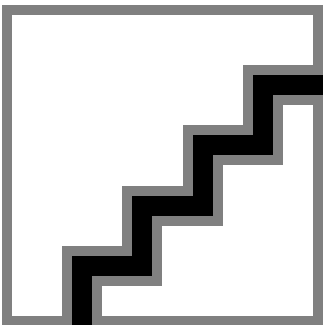


Product	D1	D2	A1	A2	A3
13T8 LED/48-3500 IF DIM 1PK 10/1	25.7 mm	26.3 mm	1,198.1 mm	1,205.2 mm	1,212.3 mm

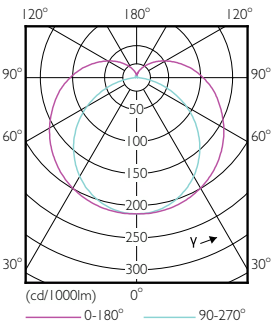
Photometric data



Spectral Power Distribution Colour - 13T8 LED/48-3500 IF DIM 1PK 10/1

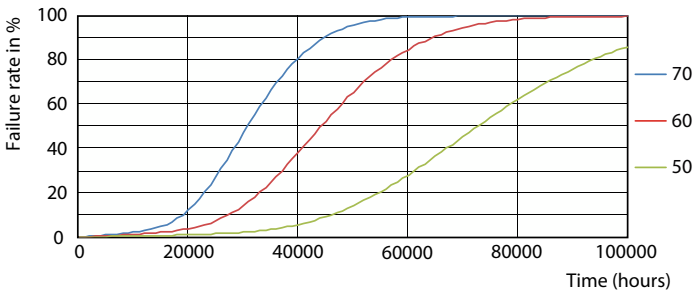


General uniform lighting - 13T8 LED/48-3500 IF DIM 1PK 10/1



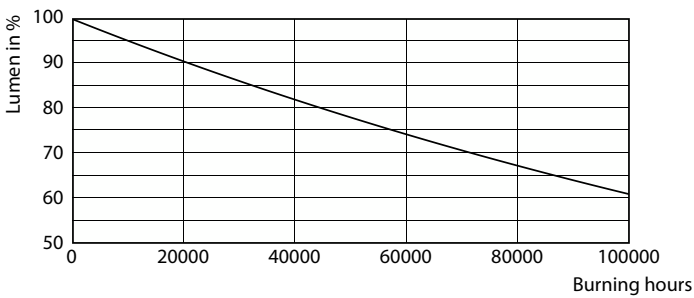
Light Distribution Diagram - 13T8 LED/48-3500 IF DIM 1PK 10/1

Lifetime



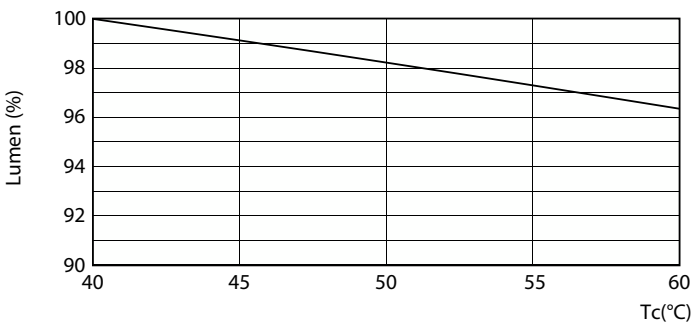
Life Expectancy Diagram - 13T8 LED/48-3500 IF DIM 1PK 10/1

Life Expectancy Diagram - 13T8 LED/48-3500 IF DIM 1PK 10/1



Life Expectancy Diagram - 13T8 LED/48-3500 IF DIM 1PK 10/1

Lumen Maintenance Diagram - 13T8 LED/48-3500 IF DIM 1PK 10/1



Lumen Maintenance Diagram - 13T8 LED/48-3500 IF DIM 1PK 10/1

