

T8

13T8 LED/48-5000 IF DIM 1PK 10/1

Our TLEDs are available in InstantFit (Type A / Type C) or MainsFit (Ballast bypass / Type B) versions. The InstantFit lamps work on a broad variety of ballasts and LED drivers. Only InstantFit has over 15,000 lamp & ballast combinations delivering even light output, energy savings and a long lifetime. Our MainsFit products feature a double-ended design, simplifying installation while a proprietary safety circuit minimizes a shock risk. Lamp sizes range from 2-foot to 8-foot and U-bend with a variety of lumen outputs.

Product data

General Information		Input Frequency	
Cap-Base	G13 [Medium Bi-Pin Fluorescent]	Power Consumption	20000-120000 Hz
Nominal lifetime	70,000 hour(s)	Lamp Current (Max)	13 W
Switching Cycle	50,000	Lamp Current (Min)	400 mA
Lighting Technology	LED	Starting Time (Nom)	130 mA
EU RoHS compliant	Yes	Warm-up time to 60% light	0.5 s
		Power Factor (Fraction)	0.9
		Voltage (Nom)	120-277V; 347 V
Light Technical		Temperature	
Color Code	850 [CCT of 5000K]	Ambient temperature range	-20 °C to 45 °C
Beam Angle (Nom)	180 degree(s)	T-Case Maximum (Nom)	50 °C
Luminous Flux	2,100 lm		
Color Designation	Daylight	Controls and Dimming	
Correlated Color Temperature (Nom)	5000 K	Dimmable	Yes
Luminous Efficacy (rated) (Nom)	161.54 lm/W		
Color Consistency	<6	Mechanical and Housing	
Color rendering index (CRI)	82	Product Length	1,200 mm
LLMF At End Of Nominal Lifetime (Nom)	70 %	Bulb Shape	Tube, double-ended
Operating and Electrical			
Line Frequency	20000-120000 Hz		

T8

Approval and Application

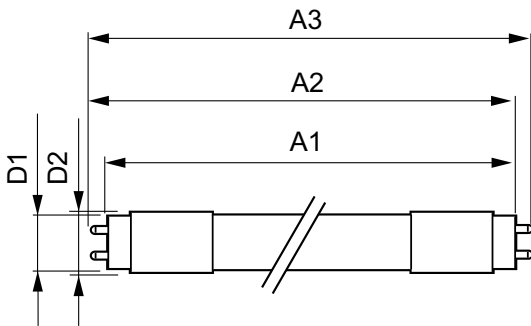
Energy Saving Product	Yes
Approval Marks	UL certificate RoHS compliance DLC compliance
Energy Consumption kWh/1000 h	- kWh

Product Data

Order product name	13T8 LED/48-5000 IF DIM 1PK 10/1
Full product name	13T8 LED/48-5000 IF DIM 1PK 10/1

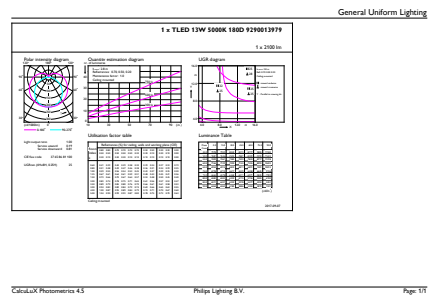
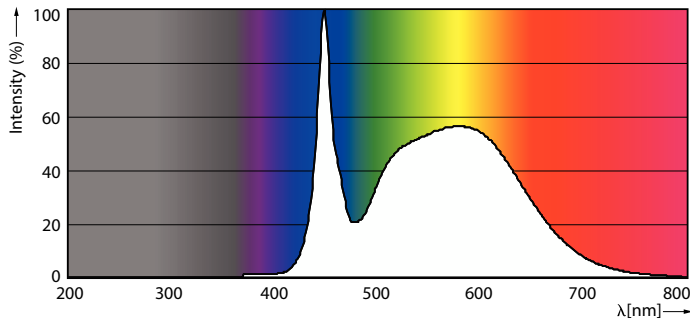
Order code	929001397904
Material Nr. (12NC)	929001397904
Numerator - Quantity Per Pack	1
EAN/UPC - Product/Case	046677473952
Numerator - Packs per outer box	10
EAN/UPC - Case	50046677473957

Dimensional drawing



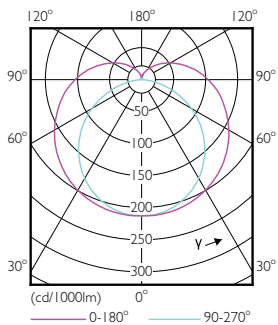
Product	D1	D2	A1	A2	A3
13T8 LED/48-5000 IF DIM 1PK 10/1	25.7 mm	26.3 mm	1,198.1 mm	1,205.2 mm	1,212.3 mm

Photometric data



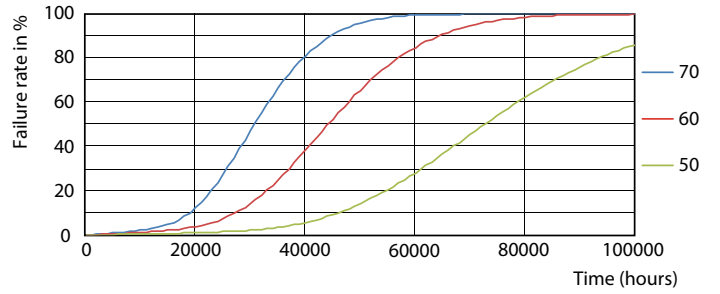
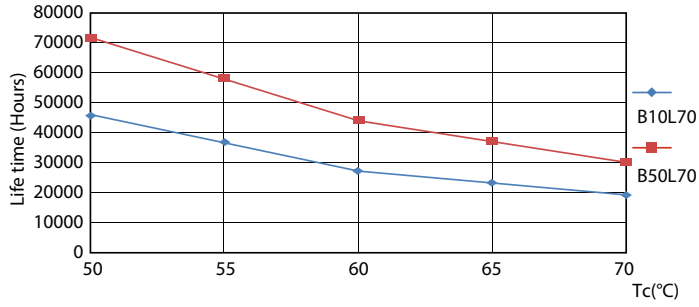
Spectral Power Distribution Colour - 13T8 LED/48-5000 IF DIM 1PK 10/1

General uniform lighting - 13T8 LED/48-5000 IF DIM 1PK 10/1



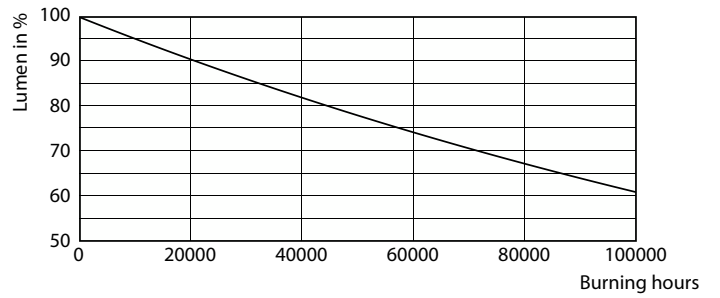
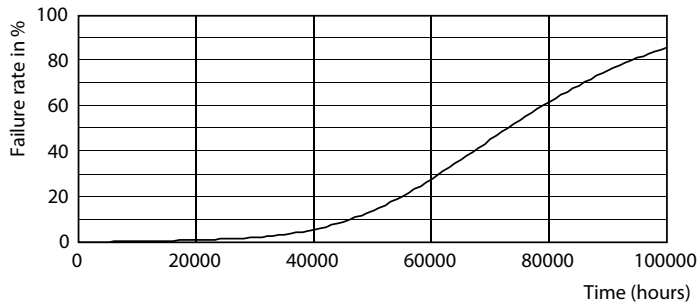
Light Distribution Diagram - 13T8 LED/48-5000 IF DIM 1PK 10/1

Lifetime



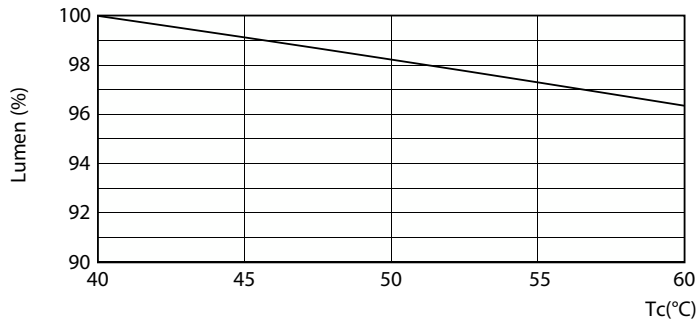
Life Expectancy Diagram - 13T8 LED/48-5000 IF DIM 1PK 10/1

Life Expectancy Diagram - 13T8 LED/48-5000 IF DIM 1PK 10/1



Life Expectancy Diagram - 13T8 LED/48-5000 IF DIM 1PK 10/1

Lumen Maintenance Diagram - 13T8 LED/48-5000 IF DIM 1PK 10/1



Lumen Maintenance Diagram - 13T8 LED/48-5000 IF DIM 1PK 10/1

