



MasterConnect T8

15T8/24-850/IF21-6U/MAScon IA 10/1

Introducing MasterConnect LED lamps - smart retrofit LED lamps that give you an easy and seamless way to upgrade to connected lighting. Simply set up with an intuitive app, MasterConnect LED lamps can be programmed to maximize energy savings, while providing wireless and automated light for your comfort and convenience. What's more, it is fully scalable and upgradable. If you want to enjoy further benefits such as remote control or management dashboard, you can simply keep the currently installed lamps and add a gateway to experience all the advantages of a cloud-based system. There's no better way to take lighting solutions to the next level.

Product data

General Information		Operating and Electrical	
Cap-Base	G13 [Medium Bi-Pin Fluorescent]	Line Frequency	40000-80000 Hz
Nominal lifetime	50,000 hour(s)	Input Frequency	40000-80000 Hz
Switching Cycle	50,000	Power Consumption	15 W
Lighting Technology	LED	Lamp Current (Max)	350 mA
EU RoHS compliant	Yes	Lamp Current (Min)	120 mA
Light Technical		Starting Time (Nom)	0.5 s
Color Code	850 [CCT of 5000K]	Warm-up time to 60% light	0.5 s
Beam Angle (Nom)	160 degree(s)	Power Factor (Fraction)	0.9
Luminous Flux	2,100 lm	Voltage (Nom)	160-380 V
Color Designation	Daylight	Temperature	
Correlated Color Temperature (Nom)	5000 K	Ambient temperature range	-4 °F to 113 °F
Luminous Efficacy (rated) (Nom)	140.00 lm/W	T-Case Maximum (Nom)	104 °F
Color Consistency	<6	Controls and Dimming	
Color rendering index (CRI)	80	Dimmable	Wireless Dim
LLMF At End Of Nominal Lifetime (Nom)	70 %		

MasterConnect T8

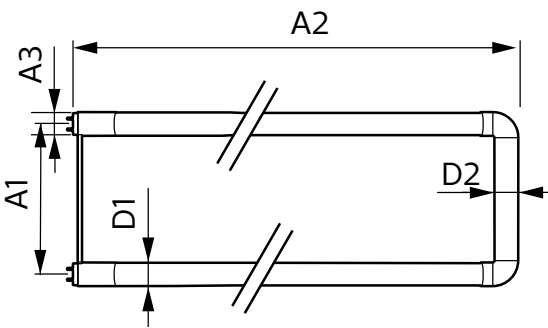
Mechanical and Housing

Product Length	23-5/8 inch
Bulb Shape	Tube, double-ended
Approval and Application	
Energy Saving Product	Yes
Approval Marks	UL certificate RoHS compliance DLC compliance
Energy Consumption kWh/1000 h	- kWh
Energy Certifications	DLC Standard

Product Data

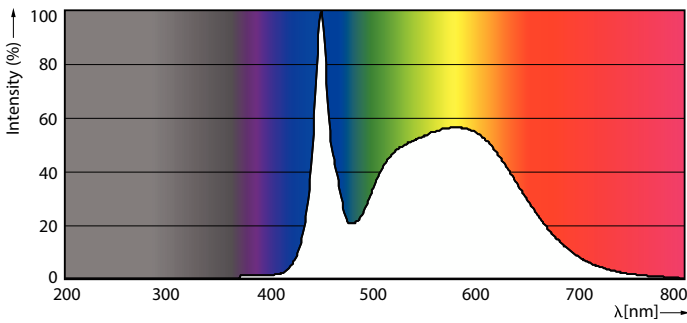
Order product name	15T8/24-850/IF21-6U/MAScon IA 10/1
Full product name	15T8/24-850/IF21-6U/MAScon IA 10/1
Order code	537241
Material Nr. (12NC)	929001398364
Numerator - Quantity Per Pack	1
EAN/UPC - Product/Case	046677537241
Numerator - Packs per outer box	10
EAN/UPC - Case	50046677537246

Dimensional drawing

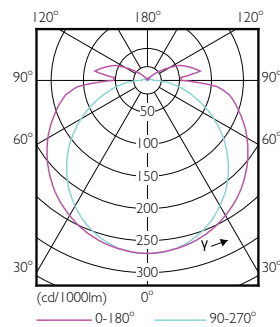


Product	D1	D2	B	A1	D
15T8/24-850/IF21-6U/MAScon IA 10/1	1 inch	1-1/8 inch	6 inch	22-1/2 inch	1-1/8 inch

Photometric data

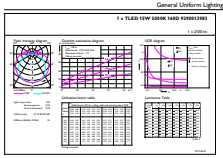


Spectral Power Distribution Colour - 15T8/24-850/IF21-6U/MAScon IA 10/1



Light Distribution Diagram - 15T8/24-850/IF21-6U/MAScon IA 10/1

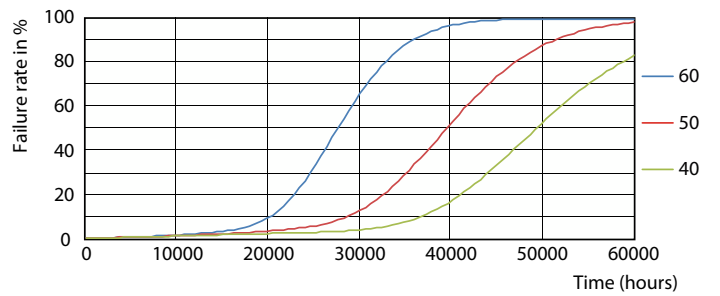
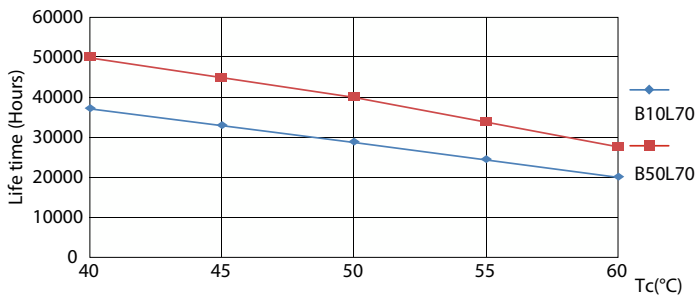
Photometric data



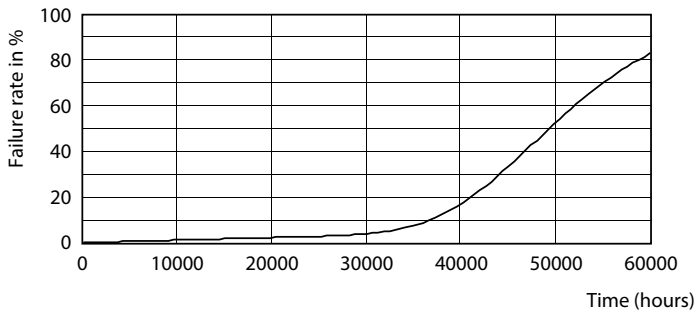
General Uniform Lighting
Page Lighting 01
Page 11

General uniform lighting - 15T8/24-850/IF21-6U/MAScon IA 10/1

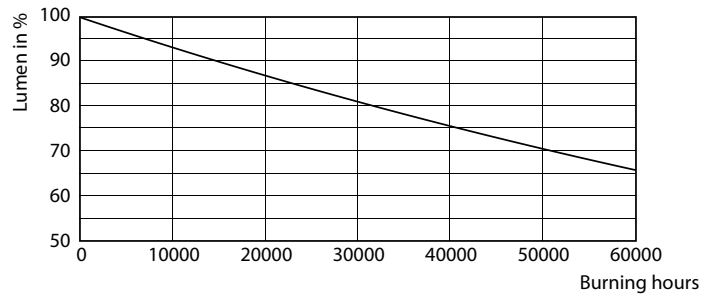
Lifetime



Life Expectancy Diagram - 15T8/24-850/IF21-6U/MAScon IA 10/1



Life Expectancy Diagram - 15T8/24-850/IF21-6U/MAScon IA 10/1

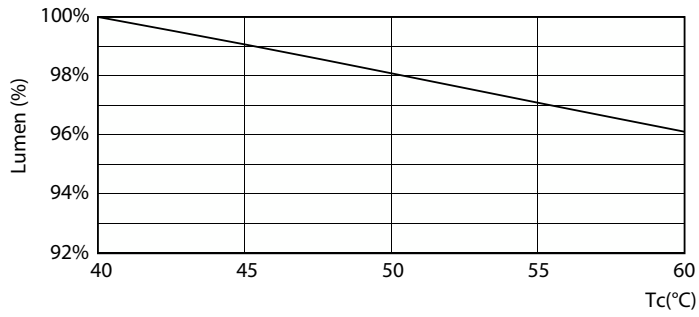


Life Expectancy Diagram - 15T8/24-850/IF21-6U/MAScon IA 10/1

Lumen Maintenance Diagram - 15T8/24-850/IF21-6U/MAScon IA 10/1

MasterConnect T8

Lifetime



Lumen Maintenance Diagram - 15T8/24-850/IF21-6U/MAScon IA 10/1

