



T8

8T8 LED/24-3000 IF EasySmart 1PK 10/1

Our TLEDs are available in InstantFit (Type A / Type C) or MainsFit (Ballast bypass / Type B) versions. The InstantFit lamps work on a broad variety of ballasts and LED drivers. Only InstantFit has over 15,000 lamp & ballast combinations delivering even light output, energy savings and a long lifetime. Our MainsFit products feature a double-ended design, simplifying installation while a proprietary safety circuit minimizes a shock risk. Lamp sizes range from 2-foot to 8-foot and U-bend with a variety of lumen outputs.

Product data

General Information		Lamp Current (Max)	
Base	G13 [Medium Bi-Pin Fluorescent]	Lamp Current (Max)	280 mA
EU RoHS compliant	Yes	Lamp Current (Min)	70 mA
Nominal Lifetime (Nom)	50000 h	Starting Time (Nom)	0.5 s
Switching Cycle	50000X	Warm Up Time to 60% Light (Nom)	0.5 s
		Power Factor (Nom)	0.9
		Voltage (Nom)	200-380 V
Light Technical		Temperature	
Color Code	830 [CCT of 3000K]	T-Ambient (Max)	45 °C
Beam Angle (Nom)	160 °	T-Ambient (Min)	-20 °C
Initial lumen (Nom)	1150 lm	T-Storage (Max)	65 °C
Color Designation	White (WH)	T-Storage (Min)	-40 °C
Correlated Color Temperature (Nom)	3000 K	T-Case Maximum (Nom)	35 °C
Luminous Efficacy (rated) (Nom)	143.75 lm/W		
Color Consistency	<6	Controls and Dimming	
Color Rendering Index (Nom)	80	Dimmable	Wireless Dim
LLMF At End Of Nominal Lifetime (Nom)	70 %		
Operating and Electrical		Mechanical and Housing	
Input Frequency	40000-85000 Hz	Product Length	600 mm
Power (Rated) (Nom)	8 W		

T8

Approval and Application

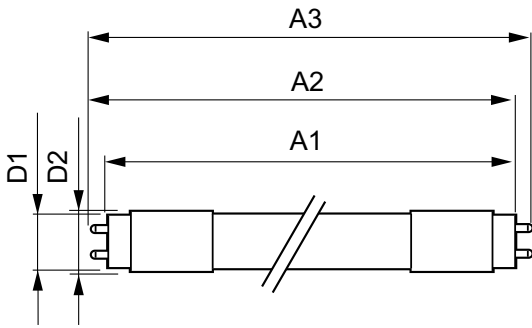
Energy Efficiency Label (EEL)	Not applicable
Energy Saving Product	Yes
Approbation Marks	UL certificate RoHS compliance
Energy Consumption kWh/1000 h	- kWh

Product Data

Order product name	8T8 LED/24-3000 IF EasySmart 1PK
EAN/UPC - Product	046677474058

Order code	474056
Numerator - Quantity Per Pack	1
Numerator - Packs per outer box	10
Material Nr. (12NC)	929001398404
Net Weight (Piece)	0.090 kg
Model Number	9290013984

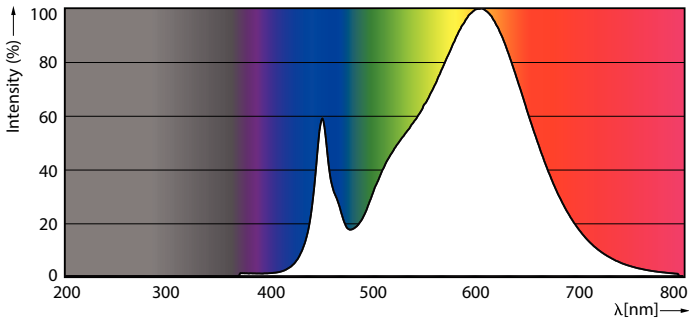
Dimensional drawing



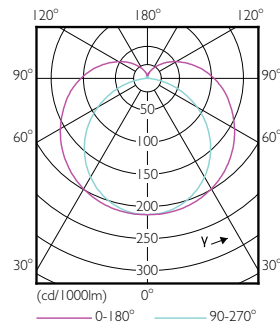
TLED SMART 2ft HF 8-18W 950lm 3000K

Product	D1	D2	A1	A2	A3
8T8 LED/24-3000 IF EasySmart 1PK	25.6 mm	27.8 mm	588.6 mm	595.7 mm	602.8 mm

Photometric data

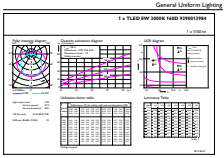


LEDtube 600mm 8W G5 830 1000lm



LEDtube 8W G13 830 160D IF EasySmart

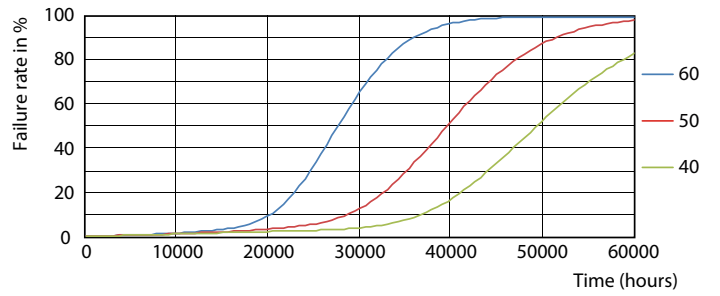
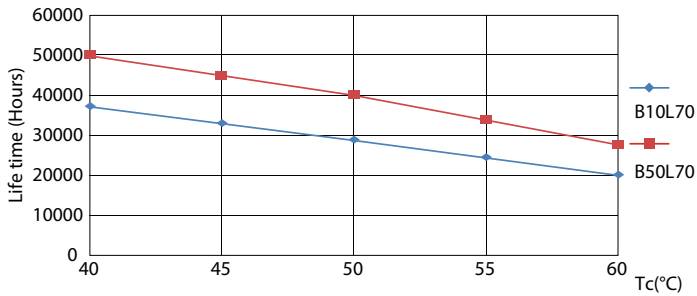
Photometric data



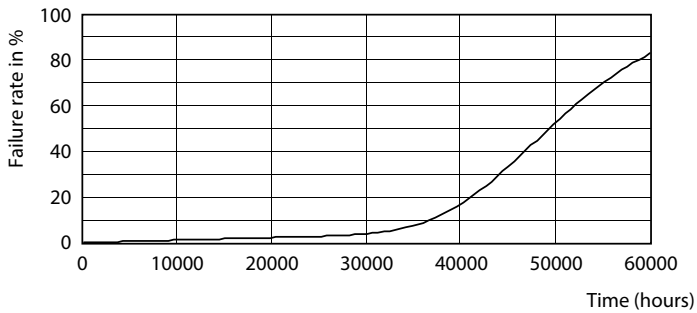
General Information 01 Page Lighting 01 Page 11

LEDtube 8W G13 830 160D IF EasySmart

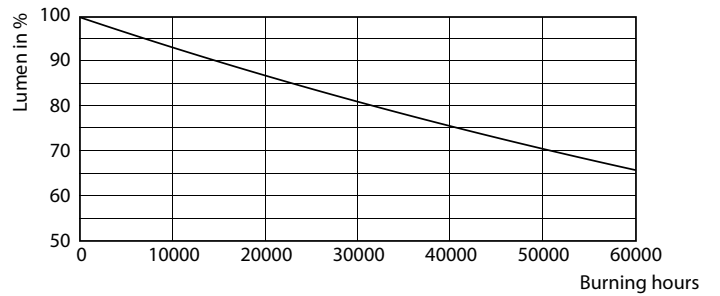
Lifetime



LEDtube 15W G13 830-850 160D IF 6U EasySmart



LEDtube 15W G13 830-850 160D IF 6U EasySmart

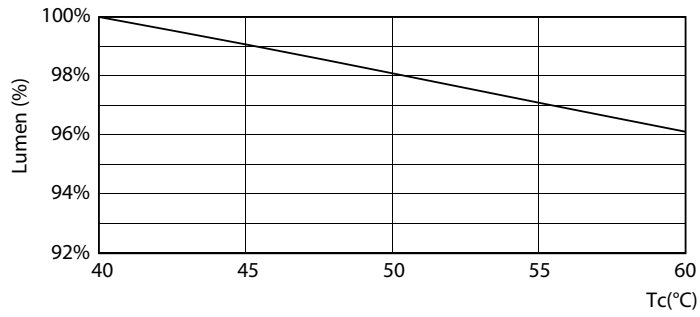


LEDtube 15W G13 830-850 160D IF 6U EasySmart

LEDtube 15W G13 830-850 160D IF 6U EasySmart

T8

Lifetime



LEDtube 15W G13 830-850 160D IF 6U EasySmart

