



MasterConnect T8

8T8/24-830/IF11/MAScon IA 10/1

Introducing MasterConnect LED lamps - smart retrofit LED lamps that give you an easy and seamless way to upgrade to connected lighting. Simply set up with an intuitive app, MasterConnect LED lamps can be programmed to maximize energy savings, while providing wireless and automated light for your comfort and convenience. What's more, it is fully scalable and upgradable. If you want to enjoy further benefits such as remote control or management dashboard, you can simply keep the currently installed lamps and add a gateway to experience all the advantages of a cloud-based system. There's no better way to take lighting solutions to the next level.

Product data

General Information	
Cap-Base	G13 [Medium Bi-Pin Fluorescent]
Nominal lifetime	50,000 hour(s)
Switching Cycle	50,000
Lighting Technology	LED
EU RoHS compliant	Yes
Light Technical	
Color Code	830 [CCT of 3000K]
Beam Angle (Nom)	160 degree(s)
Luminous Flux	1,150 lm
Color Designation	White (WH)
Correlated Color Temperature (Nom)	3000 K
Luminous Efficacy (rated) (Nom)	143.75 lm/W
Color Consistency	<6
Color rendering index (CRI)	80
LLMF At End Of Nominal Lifetime (Nom)	70 %

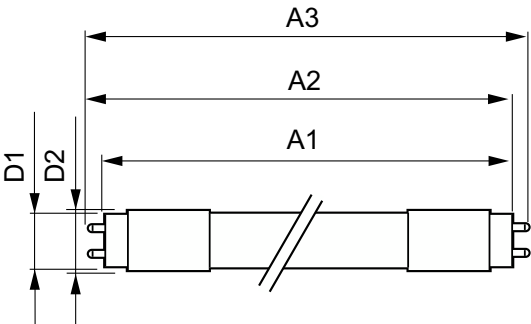
Operating and Electrical	
Line Frequency	40000-85000 Hz
Input Frequency	40000-85000 Hz
Power Consumption	8 W
Lamp Current (Max)	280 mA
Lamp Current (Min)	70 mA
Starting Time (Nom)	0.5 s
Warm-up time to 60% light	0.5 s
Power Factor (Fraction)	0.9
Voltage (Nom)	200-380 V
Temperature	
Ambient temperature range	-4 °F to 113 °F
T-Case Maximum (Nom)	95 °F
Controls and Dimming	
Dimmable	Wireless Dim

MasterConnect T8

Mechanical and Housing	
Product Length	23-5/8 inch
Bulb Shape	Tube, double-ended
Approval and Application	
Energy Saving Product	Yes
Approval Marks	UL certificate RoHS compliance
Energy Consumption kWh/1000 h	- kWh
Product Data	
Order product name	8T8/24-830/IF11/MAScon IA 10/1

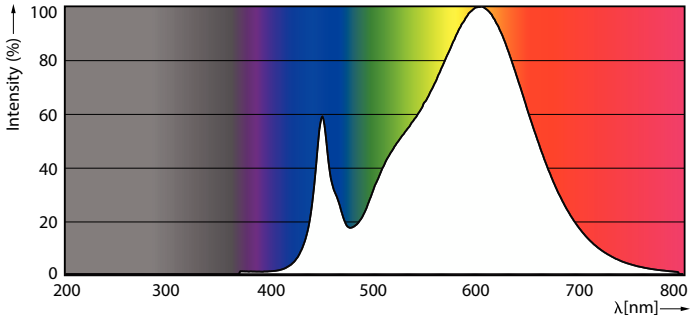
Full product name	8T8/24-830/IF11/MAScon IA 10/1
Order code	537258
Material Nr. (12NC)	929001398464
Numerator - Quantity Per Pack	1
EAN/UPC - Product/Case	046677537258
Numerator - Packs per outer box	10
EAN/UPC - Case	50046677537253

Dimensional drawing

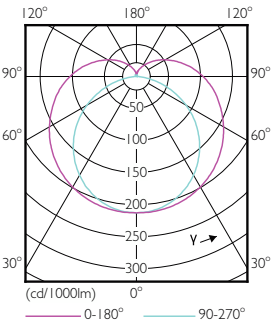


Product	D1	D2	A1	A2	A3
8T8/24-830/IF11/ MAScon IA 10/1	1-1/16 inch	1-1/8 inch	23-3/16 inch	23-1/2 inch	23-3/4 inch

Photometric data

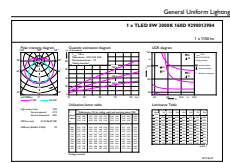


Spectral Power Distribution Colour - 8T8/24-830/IF11/MAScon IA 10/1



Light Distribution Diagram - 8T8/24-830/IF11/MAScon IA 10/1

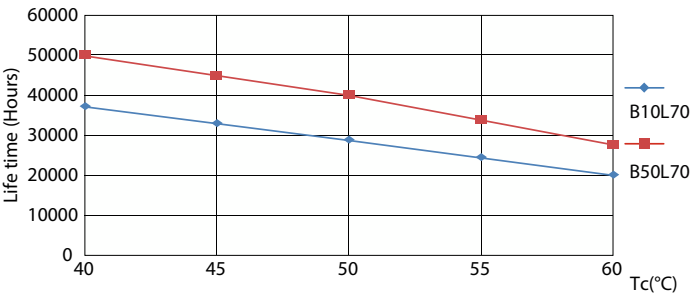
Photometric data



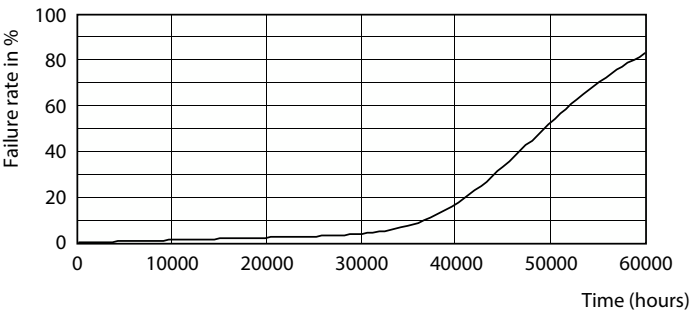
General Uniform Lighting - 8T8/24-830/IF11/MAScon IA 10/1

General uniform lighting - 8T8/24-830/IF11/MAScon IA 10/1

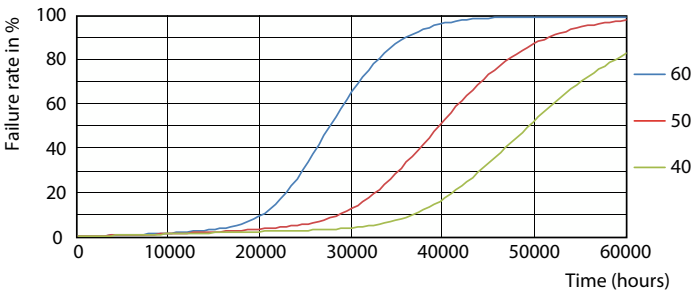
Lifetime



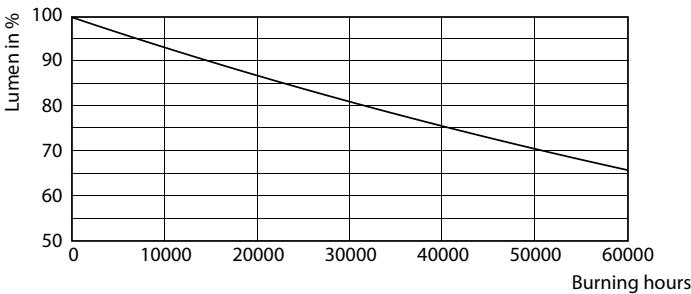
Life Expectancy Diagram - 8T8/24-830/IF11/MAScon IA 10/1



Life Expectancy Diagram - 8T8/24-830/IF11/MAScon IA 10/1



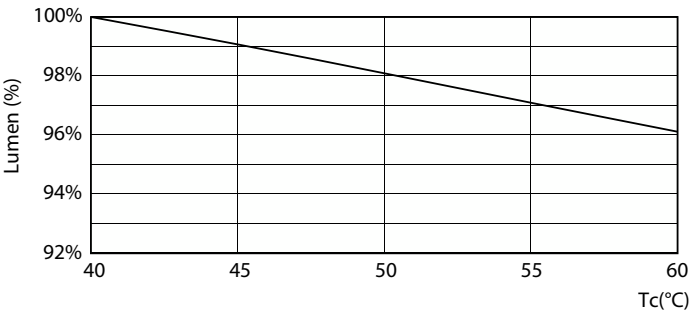
Life Expectancy Diagram - 8T8/24-830/IF11/MAScon IA 10/1



Lumen Maintenance Diagram - 8T8/24-830/IF11/MAScon IA 10/1

MasterConnect T8

Lifetime



Lumen Maintenance Diagram - 8T8/24-830/IF11/MAScon IA 10/1

