

Interact

8T8/24-830/IF11/MAScon IA 10/1

Product data

General Information	
Cap-Base	G13 [Medium Bi-Pin Fluorescent]
Main Application	Office
Nominal Lifetime (Nom)	50000 h
Switching Cycle	50000X
B50L70	50000 h
Light Technical	
Color Code	830 [CCT of 3000K]
Beam Angle (Nom)	160 °
Luminous Flux (Nom)	1150 lm
Luminous Flux (Rated) (Nom)	1150 lm
Rated Beam Angle	160 °
Correlated Color Temperature (Nom)	3000 K
Color Consistency	<6
Color Rendering Index (Nom)	80
LLMF At End Of Nominal Lifetime (Nom)	70 %
Operating and Electrical	
Input Frequency	40000-85000 Hz
Power (Rated) (Nom)	8 W
Lamp Current (Max)	280 mA
Lamp Current (Min)	70 mA
Starting Time (Nom)	0.5 s
Warm Up Time to 60% Light (Nom)	0.5 s
Power Factor (Nom)	0.9

Voltage (Nom)	200-380 V
Temperature	
T-Ambient (Max)	45 °C
T-Ambient (Min)	-20 °C
T-Storage (Max)	65 °C
T-Storage (Min)	-40 °C
T-Case Maximum (Nom)	35 °C

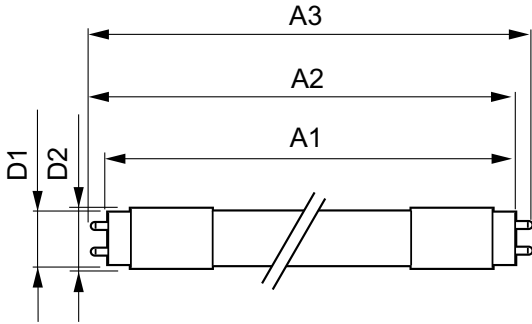
Controls and Dimming	
Dimmable	Wireless Dim

Mechanical and Housing	
Product Length	600 mm

Approval and Application	
Energy Saving Product	Yes
Approval Marks	UL certificate RoHS compliance

Product Data	
Order product name	8T8/24-830/IF11/MAScon IA 10/1
EAN/UPC - Product	046677537258
Order code	929001398464
Numerator - Quantity Per Pack	1
Numerator - Packs per outer box	10
Material Nr. (12NC)	929001398464
Net Weight (Piece)	0.080 kg

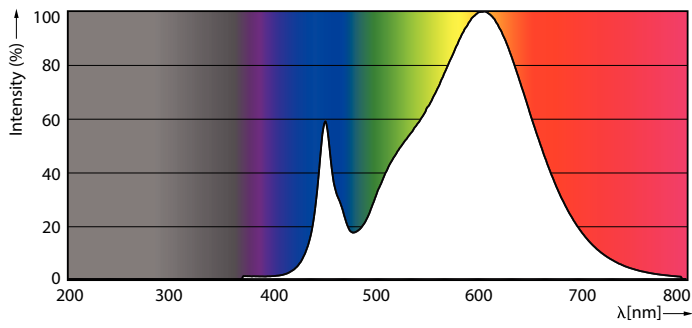
Dimensional drawing



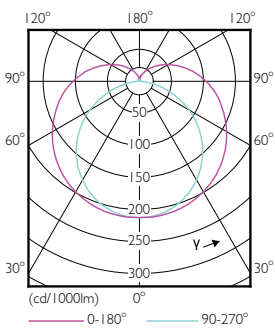
TLED SMART 2ft HF 8-18W 950lm 3000K

Product	D1	D2	A1	A2	A3
8T8/24-830/IF11/MAScon	25.6 mm	27.8 mm	588.6 mm	595.7 mm	602.8 mm
IA 10/1					

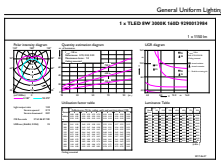
Photometric data



LEDtube 600mm 8W G5 830 1000lm



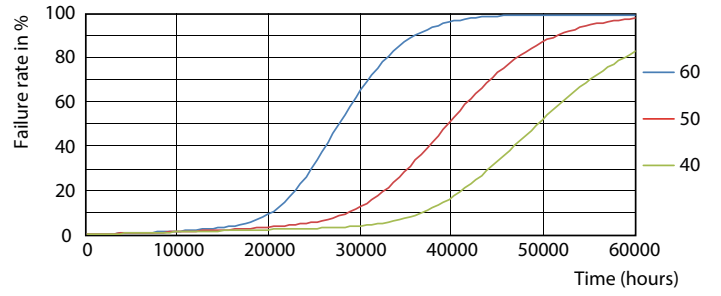
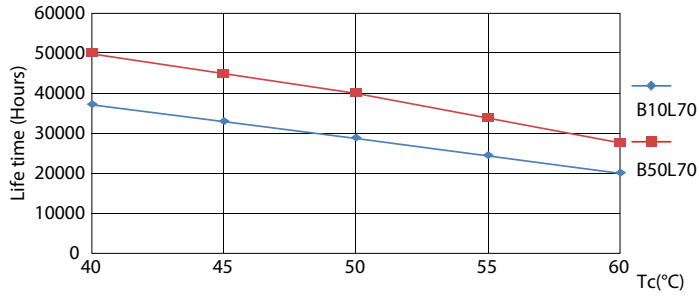
LEDtube 8W G13 830 160D IF EasySmart



LEDtube 8W G13 830 160D IF EasySmart

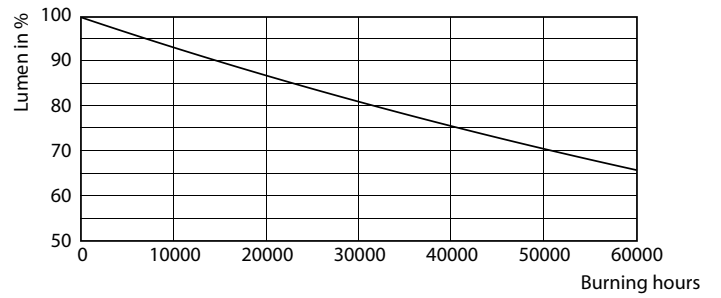
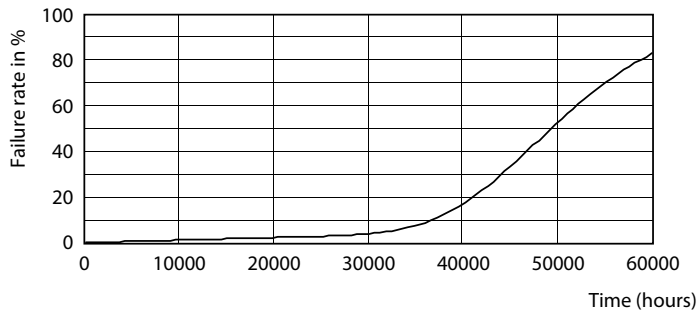
Interact

Lifetime



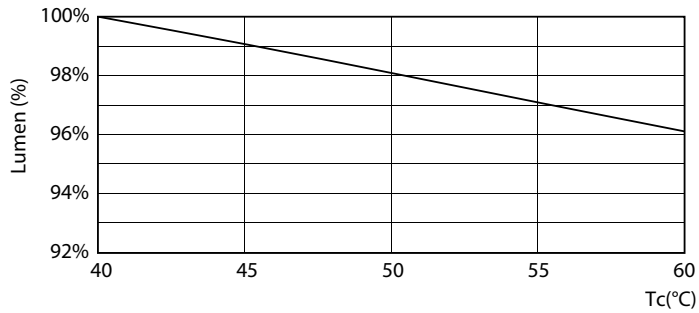
LEDtube 15W G13 830-850 160D IF 6U EasySmart

LEDtube 15W G13 830-850 160D IF 6U EasySmart



LEDtube 15W G13 830-850 160D IF 6U EasySmart

LEDtube 15W G13 830-850 160D IF 6U EasySmart



LEDtube 15W G13 830-850 160D IF 6U EasySmart

