



# T8

## 8T8 LED/24-4000 IF EasySmart 1PK 10/1

Our TLEDs are available in InstantFit (Type A / Type C) or MainsFit (Ballast bypass / Type B) versions. The InstantFit lamps work on a broad variety of ballasts and LED drivers. Only InstantFit has over 15,000 lamp & ballast combinations delivering even light output, energy savings and a long lifetime. Our MainsFit products feature a double-ended design, simplifying installation while a proprietary safety circuit minimizes a shock risk. Lamp sizes range from 2-foot to 8-foot and U-bend with a variety of lumen outputs.

### Product data

General Information	
Base	G13 [ Medium Bi-Pin Fluorescent]
EU RoHS compliant	Yes
Nominal Lifetime (Nom)	50000 h
Switching Cycle	50000X
Light Technical	
Color Code	841 [ CCT of 4100K (841)]
Beam Angle (Nom)	160 °
Initial lumen (Nom)	1200 lm
Color Designation	Cool White (CW)
Correlated Color Temperature (Nom)	4000 K
Luminous Efficacy (rated) (Nom)	150.00 lm/W
Color Consistency	<6
Color Rendering Index (Nom)	80
LLMF At End Of Nominal Lifetime (Nom)	70 %
Operating and Electrical	
Input Frequency	40000-85000 Hz
Power (Rated) (Nom)	8 W

Lamp Current (Max)	280 mA
Lamp Current (Min)	70 mA
Starting Time (Nom)	0.5 s
Warm Up Time to 60% Light (Nom)	0.5 s
Power Factor (Nom)	0.9
Voltage (Nom)	200-380 V
Temperature	
T-Ambient (Max)	45 °C
T-Ambient (Min)	-20 °C
T-Storage (Max)	65 °C
T-Storage (Min)	-40 °C
T-Case Maximum (Nom)	35 °C
Controls and Dimming	
Dimmable	Wireless Dim
Mechanical and Housing	
Product Length	600 mm

**Approval and Application**

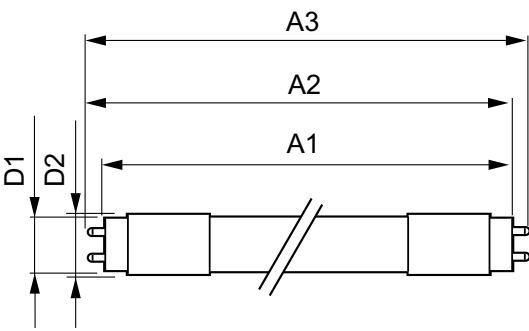
Energy Efficiency Label (EEL)	Not applicable
Energy Saving Product	Yes
Approbation Marks	UL certificate RoHS compliance DLC compliance
Energy Consumption kWh/1000 h	- kWh
Energy Certifications	DLC Standard

**Product Data**

Order product name	8T8 LED/24-4000 IF EasySmart 1PK
--------------------	----------------------------------

EAN/UPC - Product	046677474072
Order code	474072
Numerator - Quantity Per Pack	1
Numerator - Packs per outer box	10
Material Nr. (12NC)	929001398604
Net Weight (Piece)	0.090 kg
Model Number	9290013986

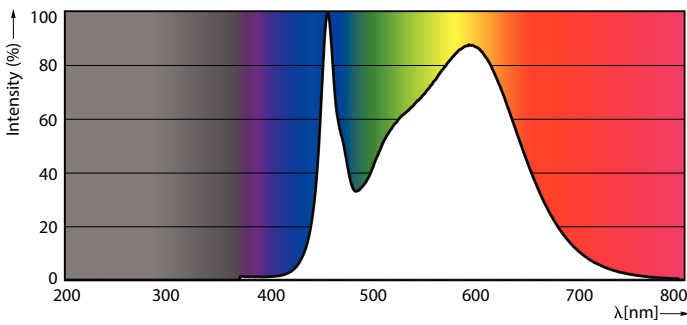
**Dimensional drawing**



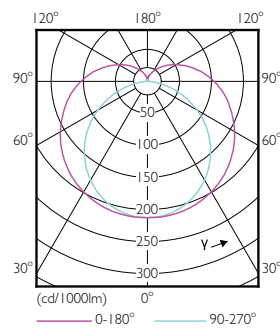
TLED SMART 2ft HF 8-18W 1050lm 4000K

Product	D1	D2	A1	A2	A3
8T8 LED/24-4000 IF EasySmart 1PK	25.6 mm	27.8 mm	588.6 mm	595.7 mm	602.8 mm

**Photometric data**

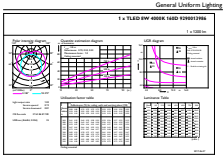


LEDtube 1500mm 20W G5 840 3000lm



LEDtube 8W G13 830 160D IF EasySmart

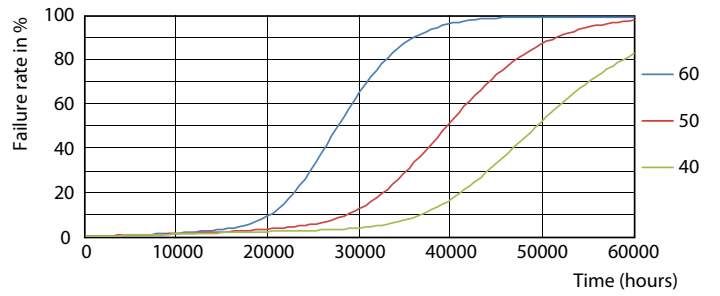
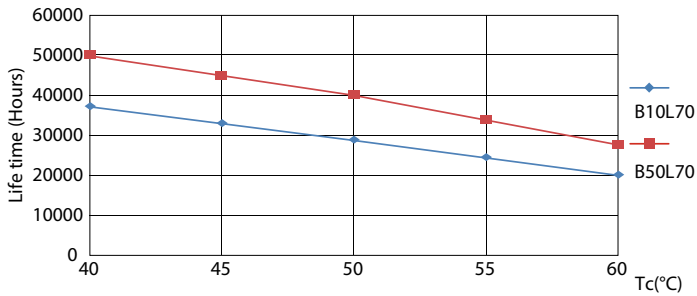
Photometric data



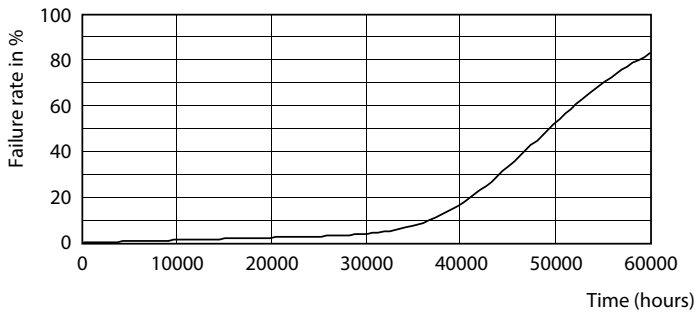
General Information 01 Page Lighting 01 Page 11

LEDtube 8W G13 840 160D IF EasySmart

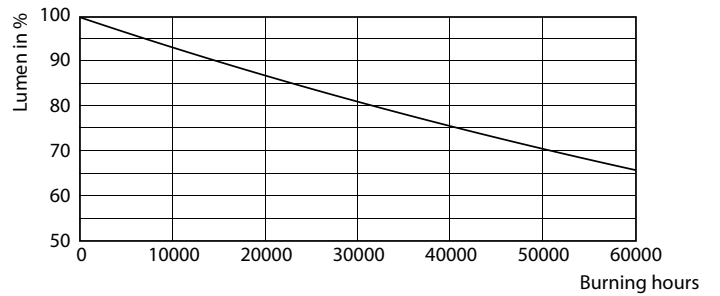
Lifetime



LEDtube 15W G13 830-850 160D IF 6U EasySmart



LEDtube 15W G13 830-850 160D IF 6U EasySmart

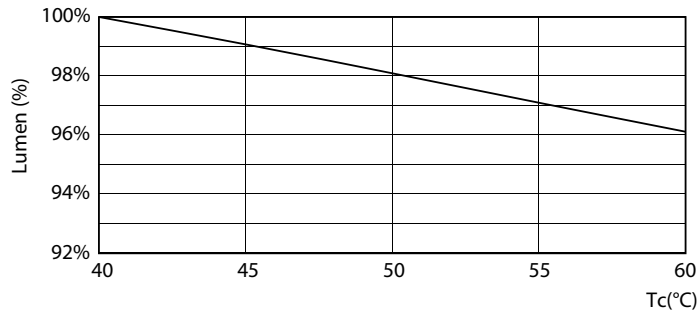


LEDtube 15W G13 830-850 160D IF 6U EasySmart

LEDtube 15W G13 830-850 160D IF 6U EasySmart

# T8

## Lifetime



LEDtube 15W G13 830-850 160D IF 6U EasySmart

