

# MasterConnect LEDtube InstantFit T8

## 8T8 LED/24-4000 IF EasySmart 1PK

Philips MasterConnect LEDtube InstantFit T8 lamp, which is Interact Ready, enables an easy upgrade to a connected lighting system without re-wiring the fixtures. The 2.4GHz mesh networking technology allows integration with a variety of control device, such as sensor and switch. It also offers secure and reliable communication towards the Interact IoT platform or verified third party systems. The result? Greater energy savings, various control possibilities and a more adaptable space!

### Product data

General Information	
Cap-Base	G13 [ Medium Bi-Pin Fluorescent]
Main Application	Industrial
Nominal Lifetime (Nom)	50000 h
Switching Cycle	50000X
B50L70	50000 h
Light Technical	
Color Code	840 [ CCT of 4000K]
Beam Angle (Nom)	160 °
Luminous Flux (Nom)	1200 lm
Luminous Flux (Rated) (Nom)	1200 lm
Rated Beam Angle	160 °
Correlated Color Temperature (Nom)	4000 K
Color Consistency	<6
Color Rendering Index (Nom)	80
LLMF At End Of Nominal Lifetime (Nom)	70 %

Operating and Electrical	
Input Frequency	40000-85000 Hz
Power (Rated) (Nom)	8 W
Lamp Current (Max)	280 mA
Lamp Current (Min)	70 mA
Starting Time (Nom)	0.5 s
Warm Up Time to 60% Light (Nom)	0.5 s
Power Factor (Nom)	0.9
Voltage (Nom)	200-380 V
Temperature	
T-Ambient (Max)	45 °C
T-Ambient (Min)	-20 °C
T-Storage (Max)	65 °C
T-Storage (Min)	-40 °C
T-Case Maximum (Nom)	35 °C

# MasterConnect LEDtube InstantFit T8

## Controls and Dimming

Dimmable	Wireless Dim
----------	--------------

## Mechanical and Housing

Product Length	600 mm
----------------	--------

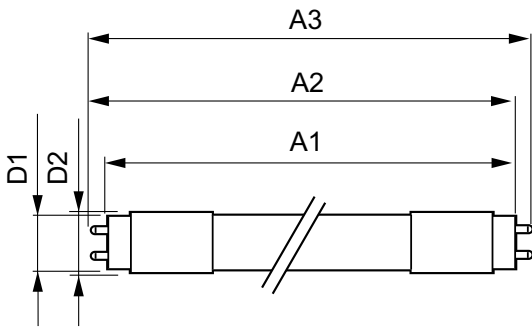
## Approval and Application

Energy Saving Product	Yes
Approval Marks	UL certificate RoHS compliance DLC compliance
DesignLights Consortium Qualified Product List	DesignLights Consortium Qualified Product List

## Product Data

Order product name	8T8 LED/24-4000 IF EasySmart 1PK
EAN/UPC - Product	046677474072
Order code	929001398604
Numerator - Quantity Per Pack	1
Numerator - Packs per outer box	10
Material Nr. (12NC)	929001398604
Net Weight (Piece)	0.090 kg

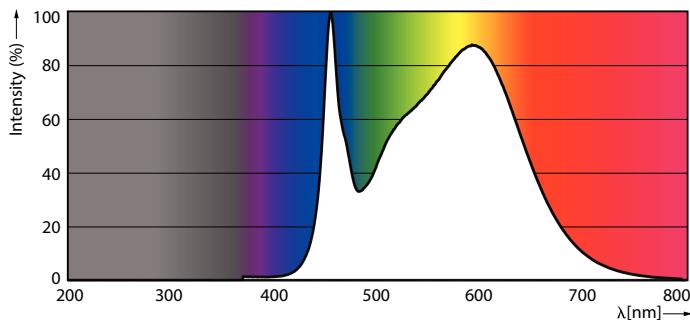
## Dimensional drawing



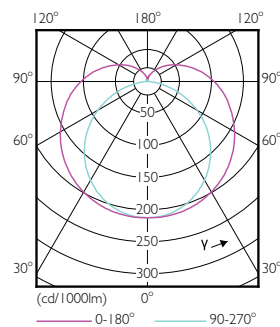
TLED SMART 2ft HF 8-18W 1050lm 4000K

Product	D1	D2	A1	A2	A3
8T8 LED/24-4000 IF EasySmart 1PK	25.6 mm	27.8 mm	588.6 mm	595.7 mm	602.8 mm

## Photometric data



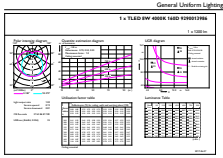
LEDtube 1500mm 20W G5 840 3000lm



LEDtube 8W G13 830 160D IF EasySmart

# MasterConnect LEDtube InstantFit T8

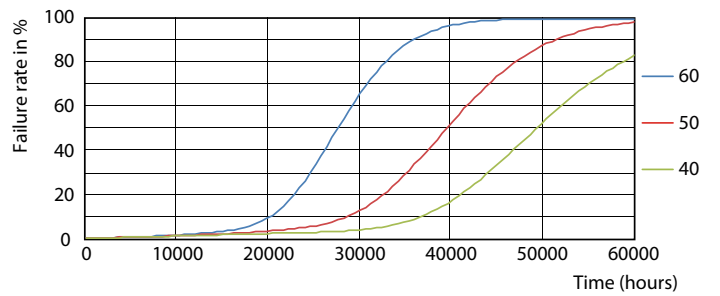
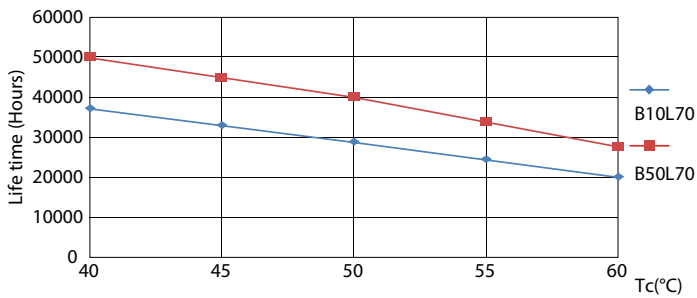
## Photometric data



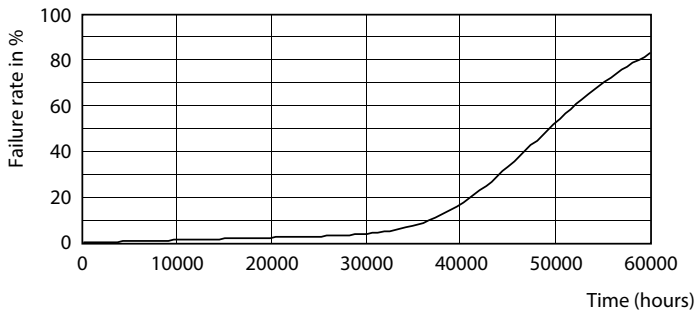
General Uniform Lighting  
Page 11 of 11

### LEDtube 8W G13 840 160D IF EasySmart

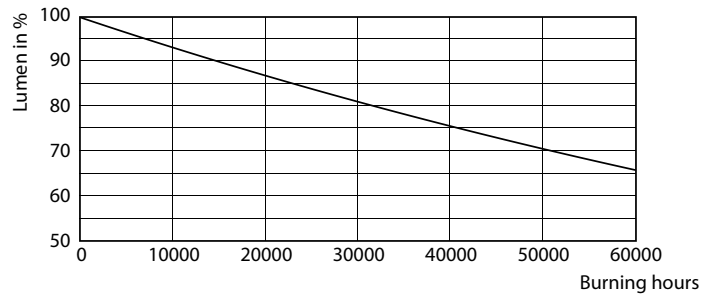
#### Lifetime



### LEDtube 15W G13 830-850 160D IF 6U EasySmart



### LEDtube 15W G13 830-850 160D IF 6U EasySmart

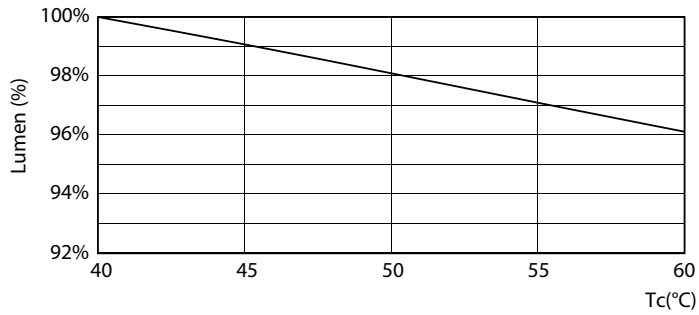


### LEDtube 15W G13 830-850 160D IF 6U EasySmart

### LEDtube 15W G13 830-850 160D IF 6U EasySmart

# MasterConnect LEDtube InstantFit T8

## Lifetime



LEDtube 15W G13 830-850 160D IF 6U EasySmart

