



# MasterConnect LEDtube EM/Mains T8

## MAScon LEDtube IA 1200mm UO 16.5W840 T8

Philips MasterConnect LEDtube EM/Mains T8 means easy upgrade to a connected lighting system. Its 2.4GHz mesh networking technology enables wireless integration with a variety of control devices, such as sensor and switch. The result? Even more energy saving and enhanced flexibility in your space. Through dimming, occupancy sensing and/or daylight harvesting, lamps deliver 50% or more energy saving thanks to MasterConnect technology.

### Product data

General Information	
Cap-Base	G13 [ Medium Bi-Pin Fluorescent]
RoHS mark	RoHS mark
Nominal Lifetime (Nom)	50000 h
Switching Cycle	200000X
B50L70	50000 h
Light Technical	
Color Code	840 [ CCT of 4000K]
Beam Angle (Nom)	160 °
Luminous Flux (Nom)	2500 lm
Luminous Flux (Rated) (Nom)	2500 lm
Rated Beam Angle	160 °
Correlated Color Temperature (Nom)	4000 K
Color Consistency	<6
Color Rendering Index (Nom)	83
LLMF At End Of Nominal Lifetime (Nom)	70 %

Operating and Electrical	
Input Frequency	50 to 60 Hz
Power (Rated) (Nom)	16.5 W
Lamp Current (Max)	76 mA
Lamp Current (Min)	69 mA
Starting Time (Nom)	0.5 s
Warm Up Time to 60% Light (Nom)	0.5 s
Power Factor (Nom)	0.9
Voltage (Nom)	220-240 V
Temperature	
T-Ambient (Max)	45 °C
T-Ambient (Min)	-20 °C
T-Storage (Max)	65 °C
T-Storage (Min)	-40 °C
T-Case Maximum (Nom)	45 °C

# MasterConnect LEDtube EM/Mains T8

## Controls and Dimming

Dimmable Wireless Dim

## Mechanical and Housing

Product Length 1200 mm

## Approval and Application

Energy Efficiency Label (EEL) A++

Energy Saving Product Yes

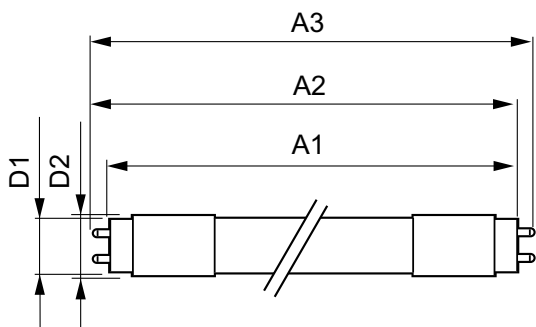
Approval Marks TUV CE marking RoHS compliance KEMA Keur certificate

Energy Consumption kWh/1000 h 17 kWh

## Product Data

Full product code	871869677344400
Order product name	MAScon LEDtube IA 1200mm UO 16.5W840 T8
EAN/UPC - Product	8718696773444
Order code	929001813802
Numerator - Quantity Per Pack	1
Numerator - Packs per outer box	10
Material Nr. (12NC)	929001813802
Net Weight (Piece)	0.251 kg

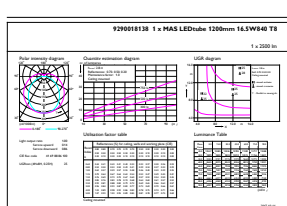
## Dimensional drawing



TLED 1200mm 16.5W 2500lm 4000K G13 D

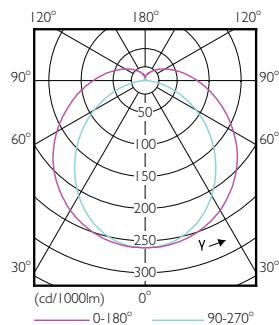
Product	D1	D2	A1	A2	A3
MAScon LEDtube IA 1200mm UO 16.5W840 T8	25.7 mm	28 mm	1199.4 mm	1205.3 mm	1212.4 mm

## Photometric data



CadaluX Prosimetrics 4.5 Philips Lighting B.V. Page 1/17

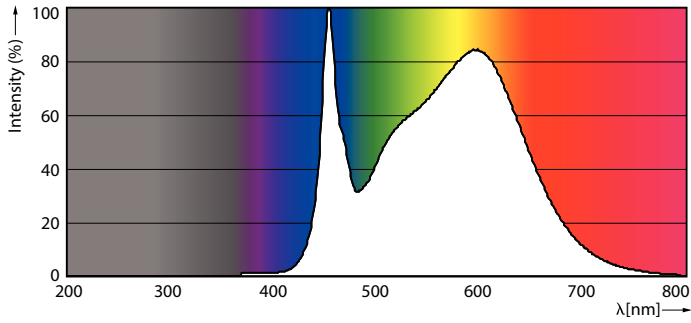
16-5W G13 840 4000K



16-5W G13 830 3000K

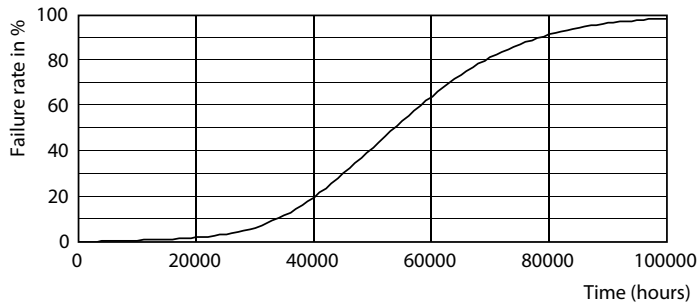
# MasterConnect LEDtube EM/Mains T8

## Photometric data

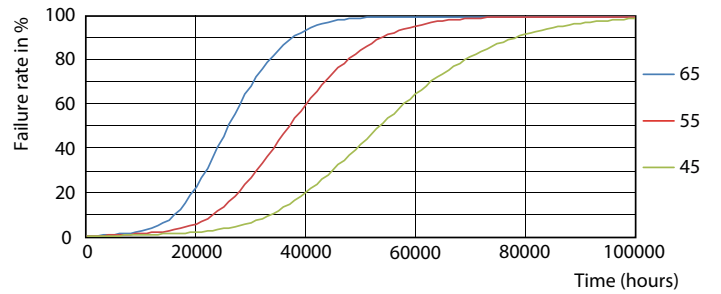


16-5W G13

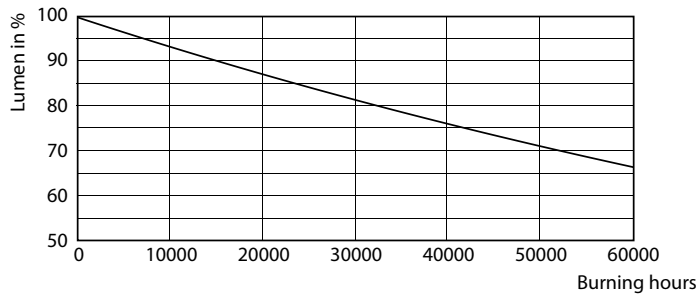
## Lifetime



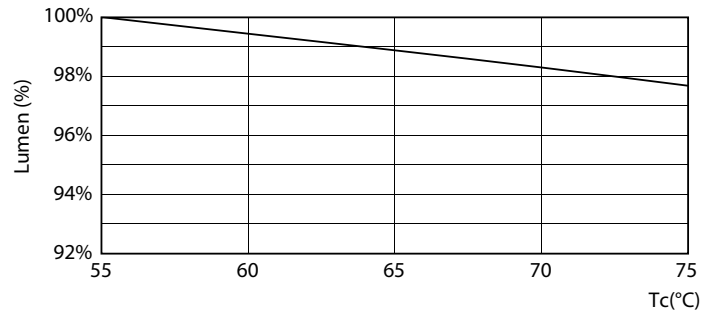
16-5W G13



16-5W G13



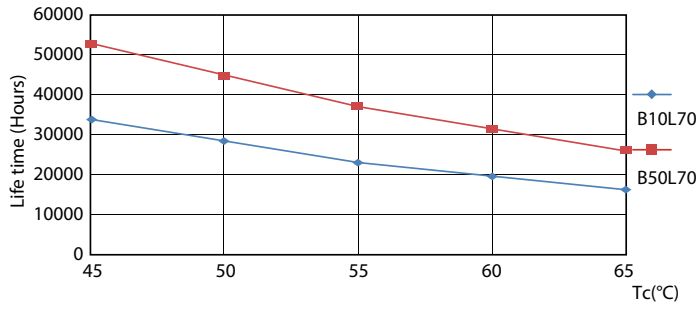
16-5W G13



16-5W G13

# MasterConnect LEDtube EM/Mains T8

## Lifetime



16-5W G13

