

MasterConnect LEDtube EM/Mains T8

MAScon LEDtube IA 1200mm UO 16.5W865 T8

Philips MasterConnect LEDtube EM/Mains T8 means easy upgrade to a connected lighting system. Its 2.4GHz mesh networking technology enables wireless integration with a variety of control devices, such as sensor and switch. The result? Even more energy saving and enhanced flexibility in your space. Through dimming, occupancy sensing and/or daylight harvesting, lamps deliver 50% or more energy saving thanks to MasterConnect technology.

Product data

General Information		Power (Rated) (Nom)	
Cap-Base	G13 [Medium Bi-Pin Fluorescent]		16.5 W
Nominal Lifetime (Nom)	50000 h	Lamp Current (Max)	76 mA
Switching Cycle	200000X	Lamp Current (Min)	69 mA
B50L70	50000 h	Starting Time (Nom)	0.5 s
		Warm Up Time to 60% Light (Nom)	0.5 s
		Power Factor (Nom)	0.9
		Voltage (Nom)	220-240 V
Light Technical		Temperature	
Color Code	865 [CCT of 6500K]	T-Ambient (Max)	45 °C
Beam Angle (Nom)	160 °	T-Ambient (Min)	-20 °C
Luminous Flux (Nom)	2500 lm	T-Storage (Max)	65 °C
Luminous Flux (Rated) (Nom)	2500 lm	T-Storage (Min)	-40 °C
Rated Beam Angle	160 °	T-Case Maximum (Nom)	45 °C
Correlated Color Temperature (Nom)	6500 K		
Color Consistency	<6	Controls and Dimming	
Color Rendering Index (Nom)	83	Dimmable	Wireless Dim
LLMF At End Of Nominal Lifetime (Nom)	70 %		
Operating and Electrical			
Input Frequency	50 to 60 Hz		

MasterConnect LEDtube EM/Mains T8

Mechanical and Housing

Product Length 1200 mm

Approval and Application

Energy Efficiency Label (EEL) A++

Energy Saving Product Yes

Approval Marks TUV CE marking RoHS compliance KEMA Keur certificate

Energy Consumption kWh/1000 h 17 kWh

Product Data

Full product code 694793914364100

Order product name MAScon LEDtube IA 1200mm UO 16.5W865 T8

EAN/UPC - Product 6947939143641

Order code 929001813910

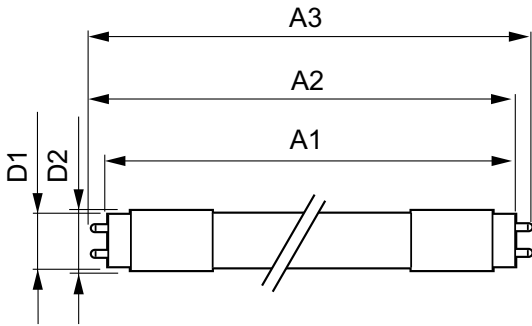
Numerator - Quantity Per Pack 1

Numerator - Packs per outer box 10

Material Nr. (12NC) 929001813910

Net Weight (Piece) 0.251 kg

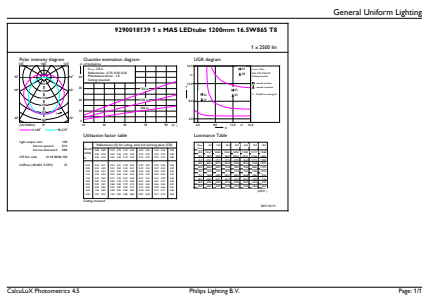
Dimensional drawing



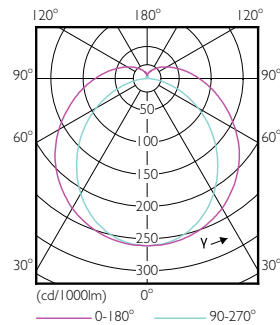
TLED 1200mm 16.5W 2500lm 6500K G13 D

Product	D1	D2	A1	A2	A3
MAScon LEDtube IA 1200mm UO 16.5W865 T8	25.7 mm	28 mm	1199.4 mm	1205.3 mm	1212.4 mm

Photometric data



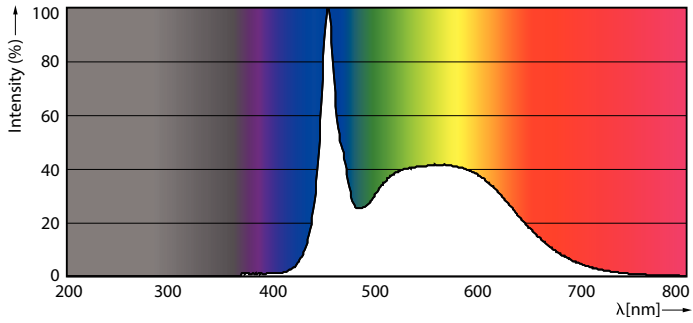
16-5W G13 865 6500K



16-5W G13 830 3000K

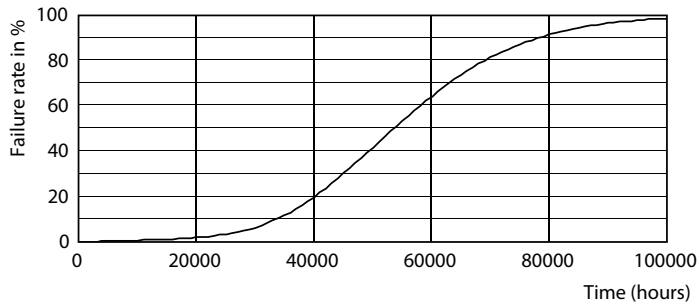
MasterConnect LEDtube EM/Mains T8

Photometric data

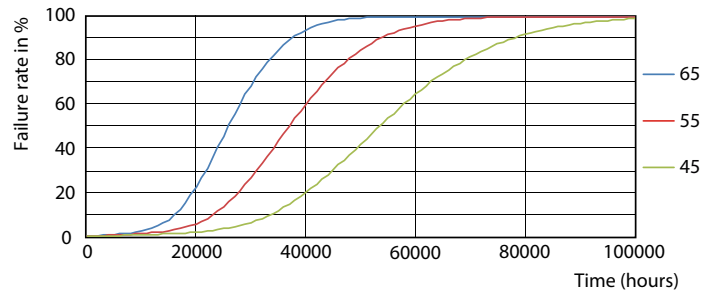


16-5W G13

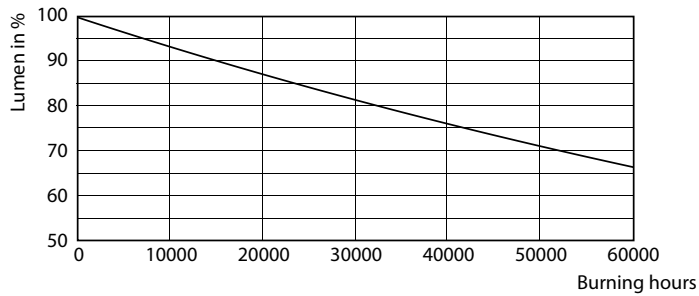
Lifetime



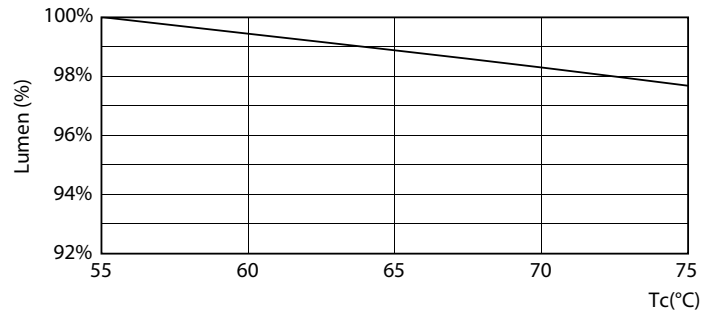
16-5W G13



16-5W G13



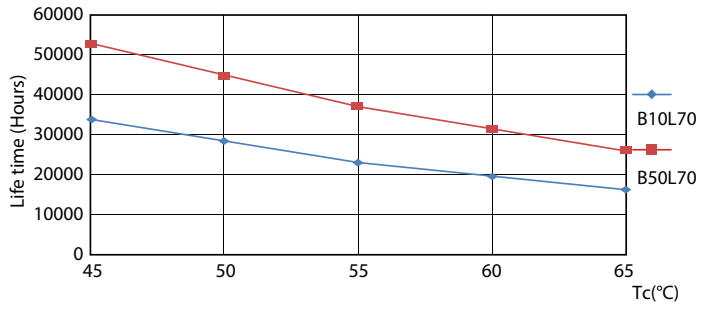
16-5W G13



16-5W G13

MasterConnect LEDtube EM/Mains T8

Lifetime



16-5W G13

