



MasterConnect LEDtube EM/Mains T8

MASTERConnect LEDtube IA 1500mm UO 25.5W840 T8

Philips MasterConnect LEDtube EM/Mains T8 means easy upgrade to a connected lighting system. Its 2.4GHz mesh networking technology enables wireless integration with a variety of control devices, such as sensor and switch. The result? Even more energy saving and enhanced flexibility in your space. Through dimming, occupancy sensing and/or daylight harvesting, lamps deliver 50% or more energy saving thanks to MasterConnect technology.

Product data

General Information	
Cap-Base	G13 [Medium Bi-Pin Fluorescent]
Nominal lifetime	50,000 hour(s)
Switching Cycle	200,000
Connectivity	Interact Ready
Lighting Technology	LED
EU RoHS compliant	Yes
Light Technical	
Color Code	840 [CCT of 4000K]
Beam Angle (Nom)	160 degree(s)
Luminous Flux	3,700 lm
Color Designation	Cool White (CW)
Correlated Color Temperature (Nom)	4000 K
Luminous Efficacy (rated) (Nom)	145.10 lm/W
Color Consistency	<6
Color rendering index (CRI)	83

LLMF At End Of Nominal Lifetime (Nom) 70 %	
Operating and Electrical	
Line Frequency	50 to 60 Hz
Input Frequency	50 to 60 Hz
Power Consumption	25.5 W
Lamp Current (Max)	117 mA
Lamp Current (Min)	108 mA
Starting Time (Nom)	0.5 s
Warm-up time to 60% light	0.5 s
Power Factor (Fraction)	0.9
Voltage (Nom)	220-240 V
Temperature	
Ambient temperature range	-20 °C to 45 °C
T-Case Maximum (Nom)	45 °C

MasterConnect LEDtube EM/Mains T8

Controls and Dimming

Dimmable Wireless Dim

Mechanical and Housing

Product Length 1,500 mm
 Bulb Shape T8

Approval and Application

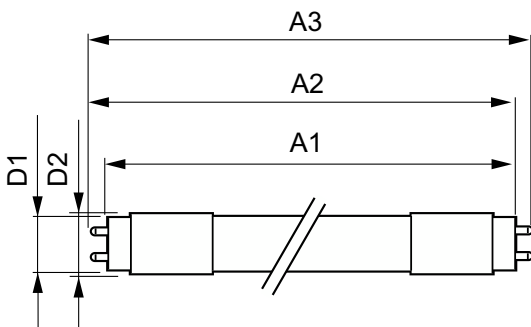
Energy Saving Product Yes
 Approval Marks TUV CE marking RoHS compliance KEMA Keur certificate
 Energy Consumption kWh/1000 h 26 kWh

Product Data

Order product name MAScon LEDtube IA 1500mm UO 25.5W840 T8

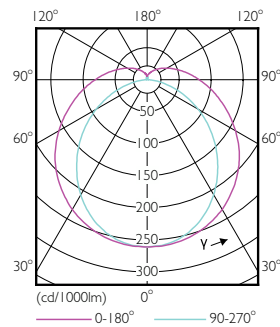
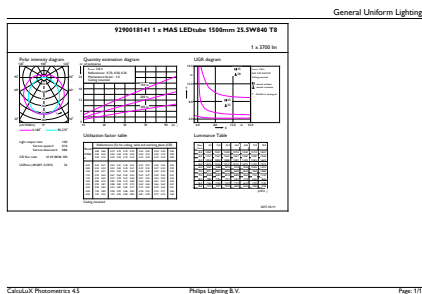
Full product name	MASTERConnect LEDtube IA 1500mm UO 25.5W840 T8
Full product code	871869677350500
Order code	77350500
Material Nr. (12NC)	929001814102
Numerator - Quantity Per Pack	1
EAN/UPC - Product/Case	8718696773505
Numerator - Packs per outer box	10
EAN/UPC - Case	8718696773512

Dimensional drawing



Product	D1	D2	A1	A2	A3
MAScon LEDtube IA 1500mm UO 25.5W840 T8	25.7 mm	28 mm	1,500 mm	1,507.1 mm	1,514.2 mm

Photometric data

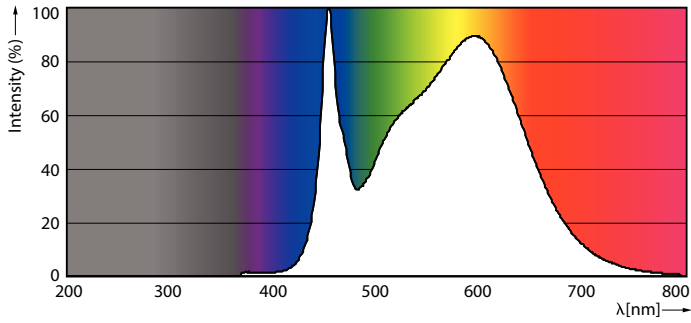


General uniform lighting - MAScon LEDtube IA 1500mm UO 25.5W840 T8

Light Distribution Diagram - MAScon LEDtube IA 1500mm UO 25.5W840 T8

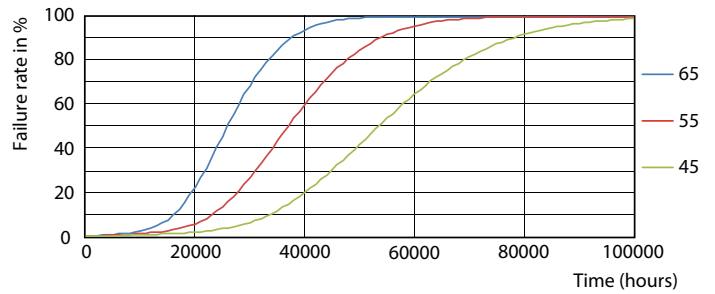
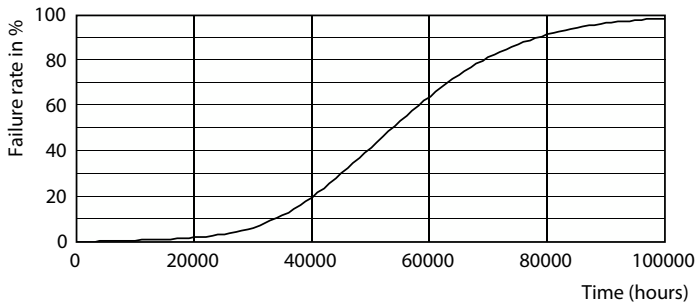
MasterConnect LEDtube EM/Mains T8

Photometric data



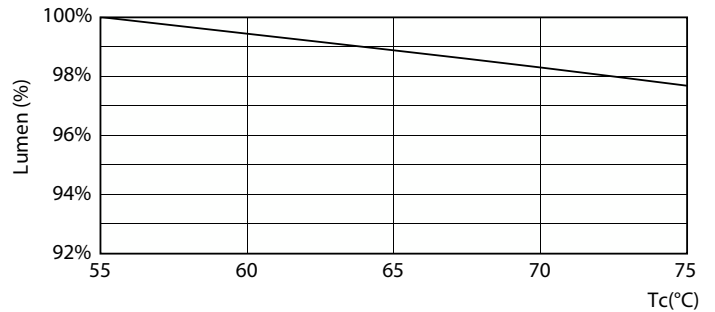
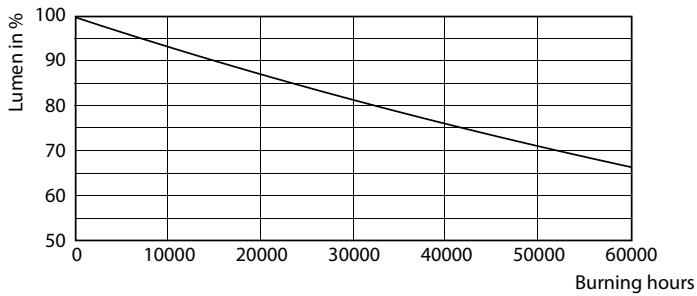
Spectral Power Distribution Colour - MAScon LEDtube IA 1500mm UO 25.5W840 T8

Lifetime



Life Expectancy Diagram - MAScon LEDtube IA 1500mm UO 25.5W840 T8

Life Expectancy Diagram - MAScon LEDtube IA 1500mm UO 25.5W840 T8

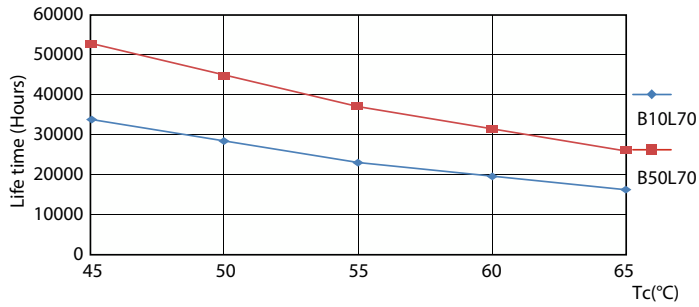


Lumen Maintenance Diagram - MAScon LEDtube IA 1500mm UO 25.5W840 T8

Lumen Maintenance Diagram - MAScon LEDtube IA 1500mm UO 25.5W840 T8

MasterConnect LEDtube EM/Mains T8

Lifetime



Life Expectancy Diagram - MAScon LEDtube IA 1500mm UO 25.5W840 T8

