

MasterConnect LEDtube EM/Mains T8

MAScon LEDtube IA 1500mm UO 25.5W840 T8

Philips MasterConnect LEDtube EM/Mains T8 means easy upgrade to a connected lighting system. Its 2.4GHz mesh networking technology enables wireless integration with a variety of control devices, such as sensor and switch. The result? Even more energy saving and enhanced flexibility in your space. Through dimming, occupancy sensing and/or daylight harvesting, lamps deliver 50% or more energy saving thanks to MasterConnect technology.

Product data

General Information	
Cap-Base	G13 [Medium Bi-Pin Fluorescent]
RoHS mark	RoHS mark
Nominal Lifetime (Nom)	50000 h
Switching Cycle	200000X
B50L70	50000 h
Light Technical	
Color Code	840 [CCT of 4000K]
Beam Angle (Nom)	160 °
Luminous Flux (Nom)	3700 lm
Luminous Flux (Rated) (Nom)	3700 lm
Rated Beam Angle	160 °
Correlated Color Temperature (Nom)	4000 K
Color Consistency	<6
Color Rendering Index (Nom)	83
LLMF At End Of Nominal Lifetime (Nom)	70 %

Operating and Electrical	
Input Frequency	50 to 60 Hz
Power (Rated) (Nom)	25.5 W
Lamp Current (Max)	117 mA
Lamp Current (Min)	108 mA
Starting Time (Nom)	0.5 s
Warm Up Time to 60% Light (Nom)	0.5 s
Power Factor (Nom)	0.9
Voltage (Nom)	220-240 V
Temperature	
T-Ambient (Max)	45 °C
T-Ambient (Min)	-20 °C
T-Storage (Max)	65 °C
T-Storage (Min)	-40 °C
T-Case Maximum (Nom)	45 °C

MasterConnect LEDtube EM/Mains T8

Controls and Dimming

Dimmable Wireless Dim

Mechanical and Housing

Product Length 1500 mm

Approval and Application

Energy Efficiency Label (EEL) A++

Energy Saving Product Yes

Approval Marks TUV CE marking RoHS compliance KEMA Keur certificate

Energy Consumption kWh/1000 h 26 kWh

Product Data

Full product code 871869677350500

Order product name MAScon LEDtube IA 1500mm UO 25.5W840 T8

EAN/UPC - Product 8718696773505

Order code 929001814102

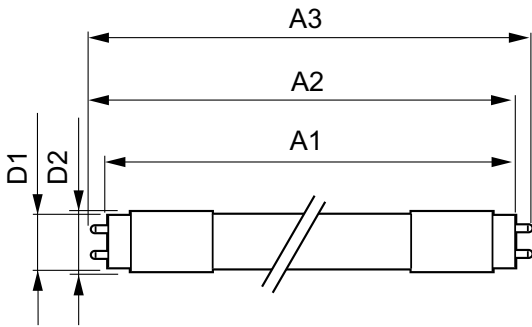
Numerator - Quantity Per Pack 1

Numerator - Packs per outer box 10

Material Nr. (12NC) 929001814102

Net Weight (Piece) 0.310 kg

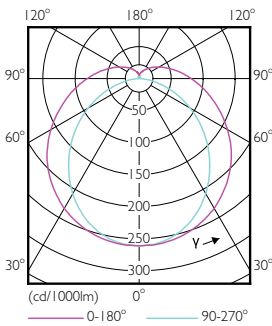
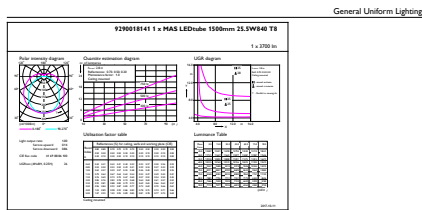
Dimensional drawing



TLED 1500mm 24.5W 3700lm 4000K G13 D

Product	D1	D2	A1	A2	A3
MAScon LEDtube IA	25.7 mm	28 mm	1500 mm	1507.1 mm	1514.2 mm
1500mm UO 25.5W840 T8					

Photometric data

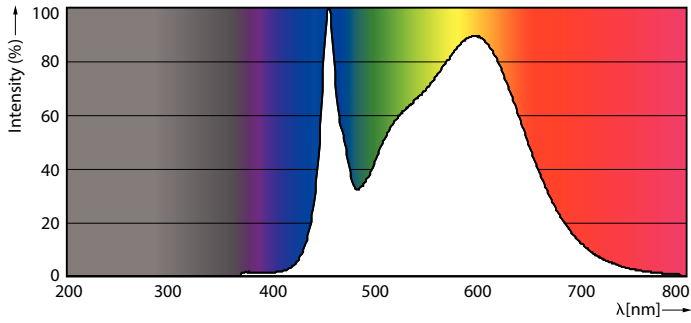


25-5W G13 840 4000K

16-5W G13 830 3000K

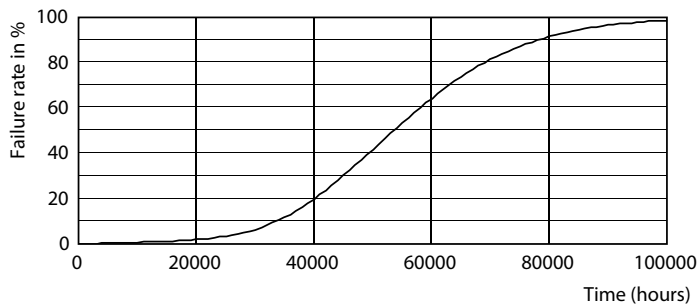
MasterConnect LEDtube EM/Mains T8

Photometric data

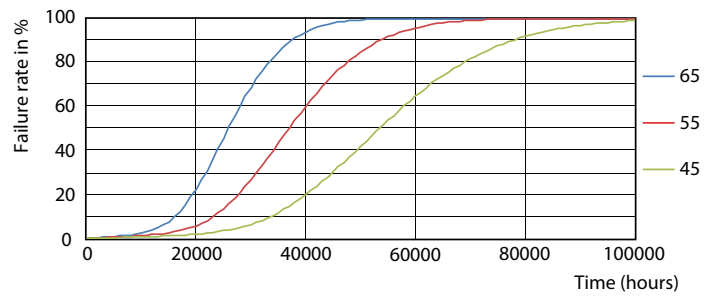


25-5W G13

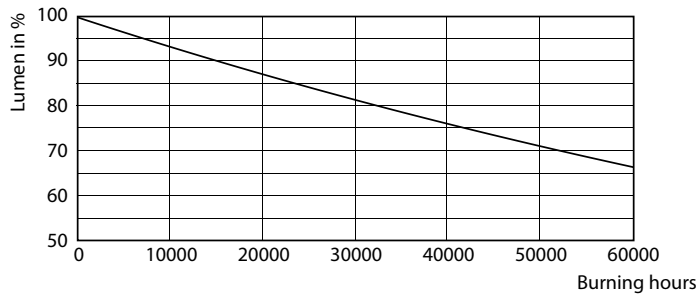
Lifetime



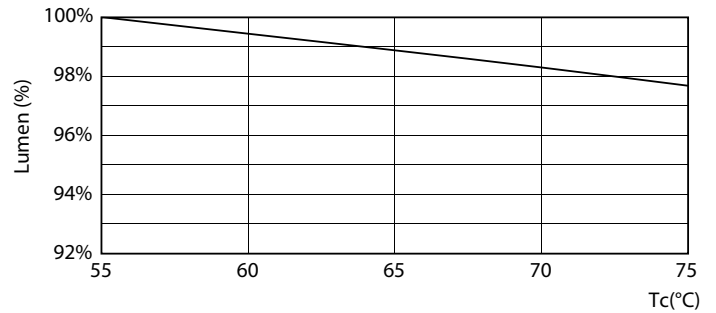
16-5W G13



16-5W G13



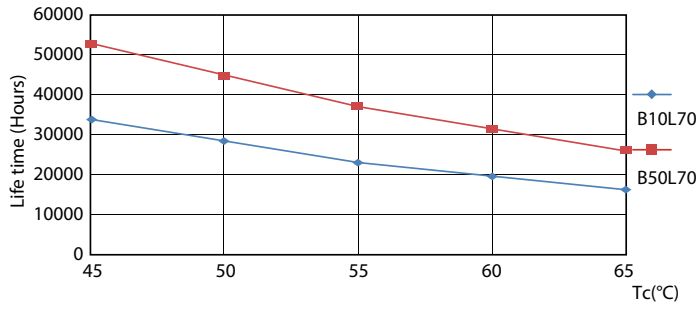
16-5W G13



16-5W G13

MasterConnect LEDtube EM/Mains T8

Lifetime



16-5W G13

