



# MasterConnect LEDtube EM/Mains T8

## MAScon LEDtube IA 1500mm UO 25.5W865 T8

Philips MasterConnect LEDtube EM/Mains T8 makes it easy to upgrade to a connected lighting system. Its 2.4 GHz mesh networking technology enables wireless integration with a variety of control devices, such as sensors and switches. The result? Even more energy saving and enhanced flexibility in your space. Through dimming, occupancy sensing and/or daylight harvesting, lamps deliver 50% or more energy saving thanks to MasterConnect technology.

### Product data

General Information	
Cap base	G13 [ Medium Bi-Pin Fluorescent]
RoHS mark	RoHS mark
Nominal lifetime (nom.)	50000 h
Switching cycle	200000X
B50L70	50000 h

Light Technical	
Colour code	865 [ CCT of 6,500 K]
Beam Angle (Nom)	160 °
Luminous flux (nom.)	3700 lm
Luminous flux (rated) (nom.)	3700 lm
Rated beam angle	160 °
Correlated colour temperature (nom.)	6500 K
Colour consistency	<6
Color rendering index (nom.)	83
LLMF at end of nominal lifetime (nom.)	70 %

Operating and Electrical	
Input frequency	50 to 60 Hz
Power (Rated) (Nom)	25.5 W
Lamp current (max.)	117 mA
Lamp current (min.)	108 mA
Starting time (nom.)	0.5 s
Warm-up time to 60% light (nom.)	0.5 s
Power factor (nom.)	0.9
Voltage (Nom)	220-240 V

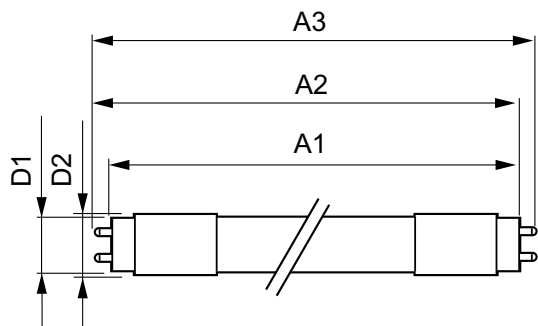
Temperature	
T ambient (max.)	45 °C
T ambient (min.)	-20 °C
T storage (max.)	65 °C
T storage (min.)	-40 °C
T-Case maximum (nom.)	45 °C

# MasterConnect LEDtube EM/Mains T8

Mechanical and Housing	
Product length	1500 mm
Approval and Application	
Energy efficiency label (EEL)	A++
Energy-saving product	Yes
Approval marks	CE marking RoHS compliance KEMA Keur certificate
Energy Consumption kWh/1000 h	26 kWh
Product Data	
Full product code	871869677352900

Order product name	MAScon LEDtube IA 1500mm UO 25.5W865 T8
EAN/UPC – product	8718696773529
Order code	77352900
Numerator – quantity per pack	1
Numerator – packs per outer box	10
Material no. (12NC)	929001814202
Net weight (piece)	0.310 kg

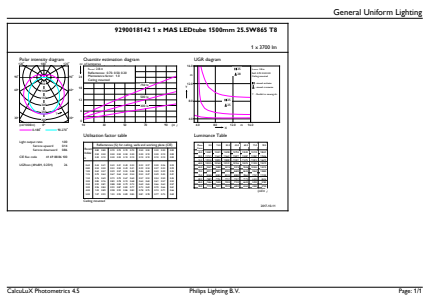
## Dimensional drawing



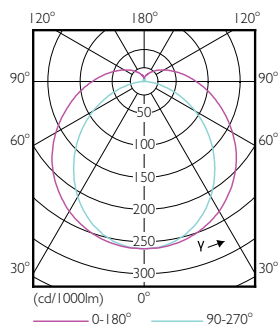
TLED 1500mm 24.5W 3700lm 6500K G13 D

Product	D1	D2	A1	A2	A3
MAScon LEDtube IA 1500mm UO 25.5W865 T8	25.7 mm	28 mm	1500 mm	1507.1 mm	1514.2 mm

## Photometric data



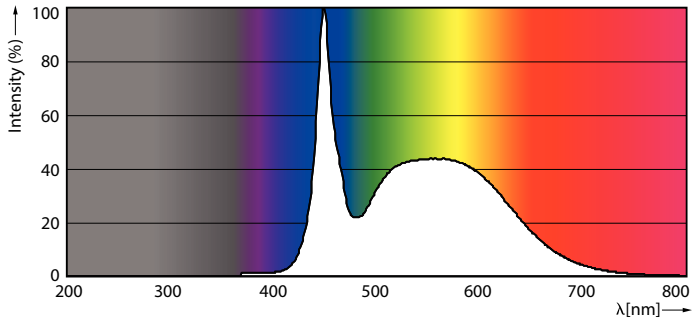
25-5W G13 865 6500K



16-5W G13 830 3000K

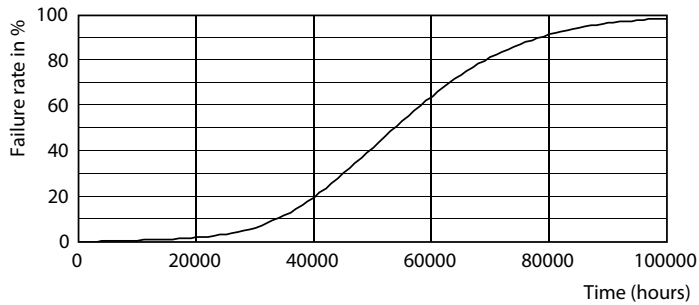
# MasterConnect LEDtube EM/Mains T8

## Photometric data

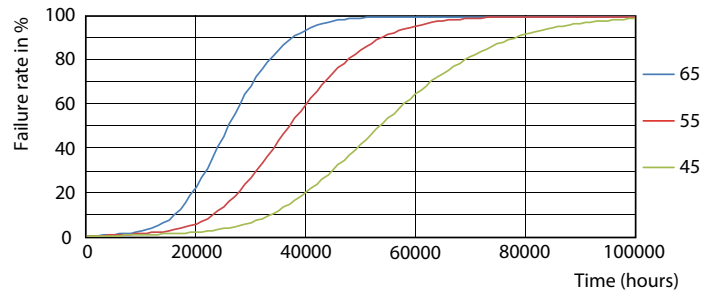


25-5W G13

## Lifetime



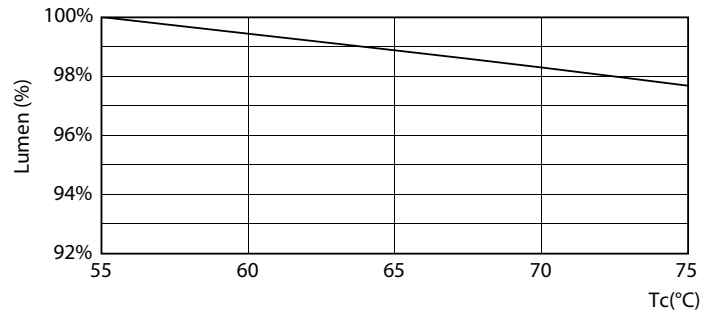
16-5W G13



16-5W G13



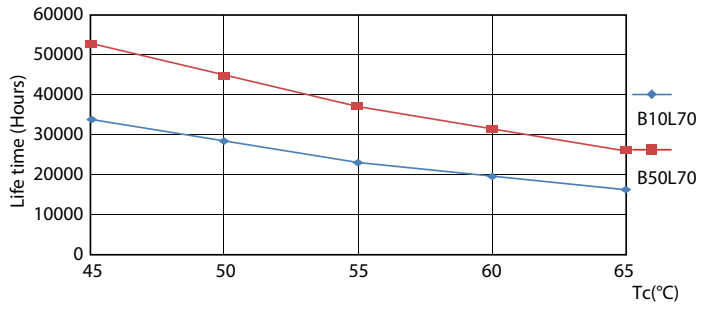
16-5W G13



16-5W G13

# MasterConnect LEDtube EM/Mains T8

## Lifetime



16-5W G13

