



# PL-C/T

## 12PLC/T LED/32H/835/IF/4P/DIM 1PK 10/1

Philips PLED 4-pin & 2-pin lamps are an affordable LED solution to replace compact fluorescent lamps. The product provides a natural lighting effect for use in many lighting applications, and provides instant energy savings, making them an environmentally-friendly solution. Available as replacements for 13W, 26W and 32W compact fluorescent lamps.

### Product data

General Information		Warm Up Time to 60% Light (Nom)	
Base	G24Q/GX24Q [ G24q/GX24q]		0.5 s
Main Application	Industrial	Power Factor (Nom)	0.9
Nominal Lifetime (Nom)	50000 h	Voltage (Nom)	25-55 V
Switching Cycle	50000X	<b>Temperature</b>	
B50L70	50000 h	T-Ambient (Max)	45 °C
<b>Light Technical</b>		T-Ambient (Min)	-20 °C
Color Code	835 [ CCT of 3500K]	T-Storage (Max)	65 °C
Initial lumen (Nom)	1400 lm	T-Storage (Min)	-40 °C
Luminous Flux (Rated) (Nom)	1400 lm	<b>Controls and Dimming</b>	
Correlated Color Temperature (Nom)	3500 K	Dimmable	Yes
Color Consistency	<6	<b>Mechanical and Housing</b>	
Color Rendering Index (Nom)	82	Product Length	200 mm
LLMF At End Of Nominal Lifetime (Nom)	70 %	<b>Approval and Application</b>	
<b>Operating and Electrical</b>		Energy Saving Product	Yes
Input Frequency	20000-100000 Hz	Approbation Marks	UL certificate RoHS compliance KEMA Keur certificate DLC compliance
Power (Rated) (Nom)	12 W	Energy Certifications	DLC Standard
Lamp Current (Max)	500 mA		
Lamp Current (Min)	150 mA		
Starting Time (Nom)	0.5 s		

# PL-C/T

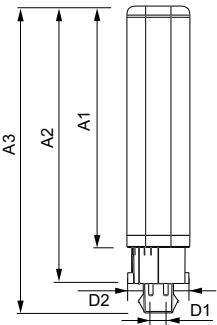
DesignLights Consortium Qualified Product -  
List

## Product Data

Order product name	12PLC/T LED/32H/835/IF/4P/DIM 1PK 10/1
EAN/UPC - Product	046677476083
Order code	476085

Numerator - Quantity Per Pack	1
Numerator - Packs per outer box	10
Material Nr. (12NC)	929001819904
Net Weight (Piece)	0.082 kg
Model Number	9290018199

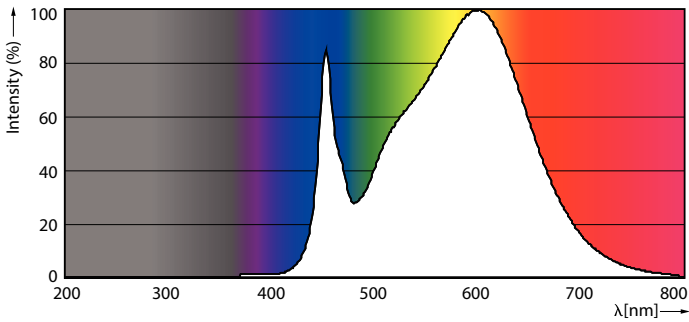
## Dimensional drawing



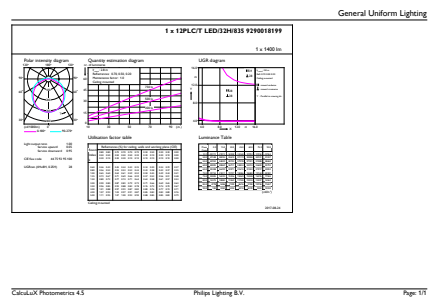
PLED 120V 12-32W 1400lm 3500K G24/Gx24

Product	D1	D2	A1	A2	A3
12PLC/T	24.3 mm	28.4 mm	128.8 mm	148 mm	163.6 mm
LED/32H/835/IF/4P/DIM 1PK					
10/1					

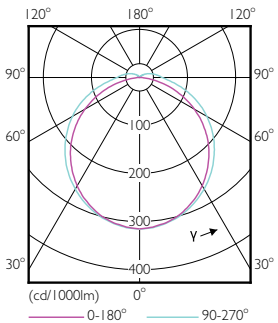
## Photometric data



LEDtube 8-15W G13 835 160D IF 6U EasySmart

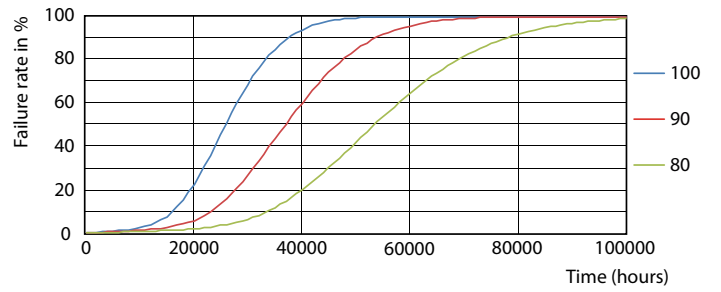
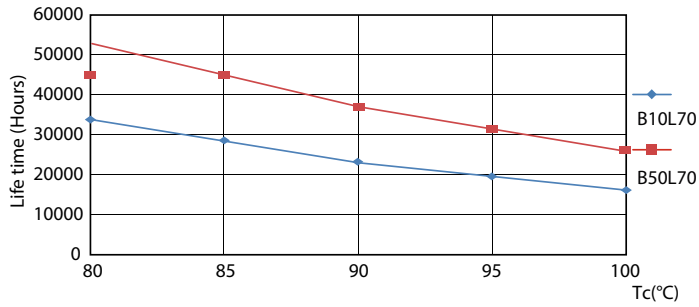


LEDtube PLC/T 12W G24Q 835 32H DIM



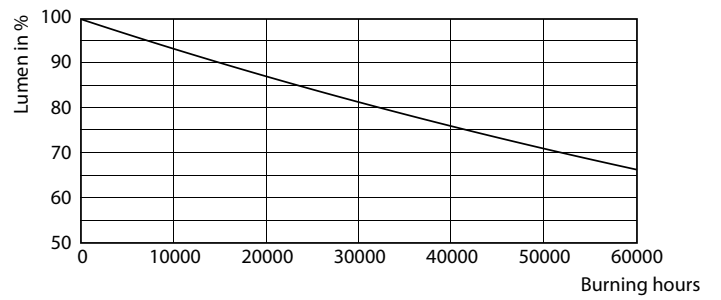
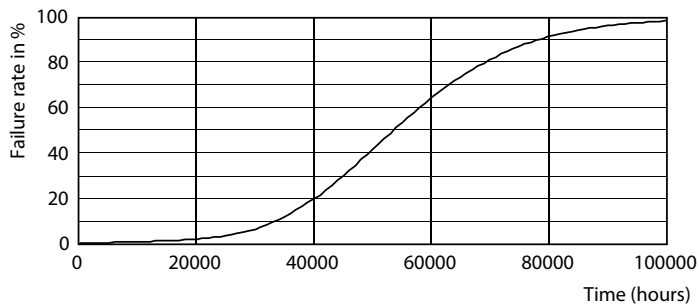
LEDtube PLC/T 12W G24Q 827 32H DIM

Lifetime



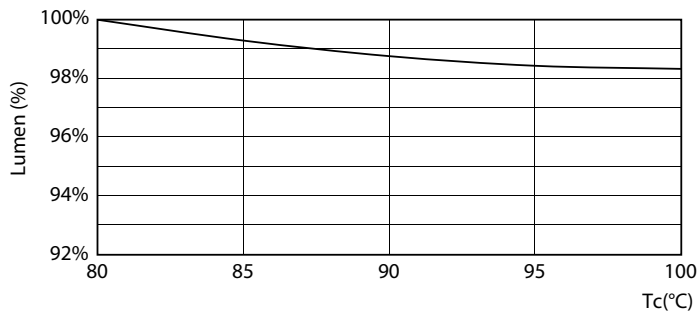
LEDtube PLC/T 12W G24Q 827-840 32H-32V DIM

LEDtube PLC/T 12W G24Q 827-840 32H-32V DIM



LEDtube PLC/T 12W G24Q 827-840 32H-32V DIM

LEDtube PLC/T 12W G24Q 827-840 32H-32V DIM



LEDtube PLC/T 12W G24Q 827-840 32H DIM

