



PL-C/T

12PLC/T LED/32V/835/IF/4P/DIM 1PK 10/1

Philips PLED 4-pin & 2-pin lamps are an affordable LED solution to replace compact fluorescent lamps. The product provides a natural lighting effect for use in many lighting applications, and provides instant energy savings, making them an environmentally-friendly solution. Available as replacements for 13W, 26W and 32W compact fluorescent lamps.

Product data

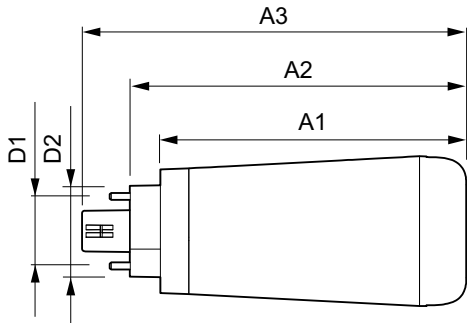
General Information		Warm Up Time to 60% Light (Nom)	
Base	G24Q/GX24Q [G24q/GX24q]		0.5 s
Main Application	Industrial	Power Factor (Nom)	0.9
Nominal Lifetime (Nom)	50000 h	Voltage (Nom)	25-55 V
Switching Cycle	50000X	Temperature	
B50L70	50000 h	T-Ambient (Max)	45 °C
Light Technical		T-Ambient (Min)	-20 °C
Color Code	835 [CCT of 3500K]	T-Storage (Max)	65 °C
Initial lumen (Nom)	1450 lm	T-Storage (Min)	-40 °C
Luminous Flux (Rated) (Nom)	1450 lm	Controls and Dimming	
Correlated Color Temperature (Nom)	3500 K	Dimmable	Yes
Color Consistency	<6	Mechanical and Housing	
Color Rendering Index (Nom)	82	Product Length	100 mm
LLMF At End Of Nominal Lifetime (Nom)	70 %	Approval and Application	
Operating and Electrical		Energy Saving Product	Yes
Input Frequency	20000-100000 Hz	Approbation Marks	UL certificate RoHS compliance KEMA Keur certificate DLC compliance
Power (Rated) (Nom)	12 W	Energy Certifications	DLC Standard
Lamp Current (Max)	500 mA		
Lamp Current (Min)	150 mA		
Starting Time (Nom)	0.5 s		

PL-C/T

DesignLights Consortium Qualified Product -	
List	
Product Data	
Order product name	12PLC/T LED/32V/835/IF/4P/DIM 1PK 10/1
EAN/UPC - Product	046677476120
Order code	476127

Numerator - Quantity Per Pack	1
Numerator - Packs per outer box	10
Material Nr. (12NC)	929001820304
Net Weight (Piece)	0.082 kg
Model Number	9290018203

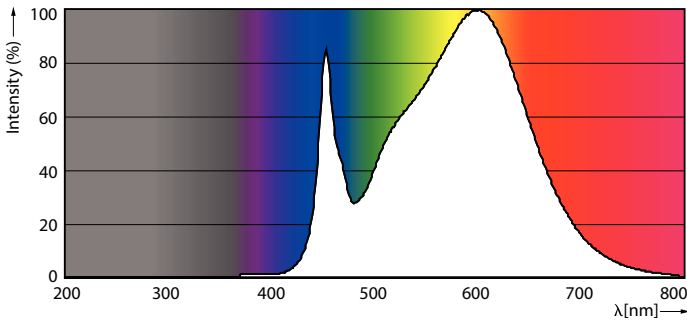
Dimensional drawing



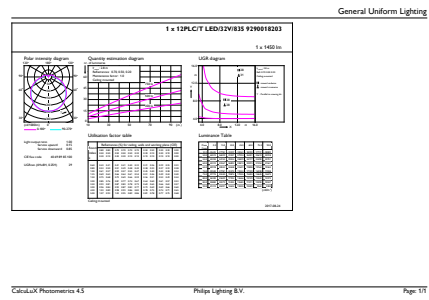
PLED 120V 12-32W 1450lm 3500K G24/Gx24

Product	D1	D2	A1	A2	A3
12PLC/T	24.3 mm	29 mm	99.9 mm	109.9 mm	125.5 mm
LED/32V/835/IF/4P/DIM 1PK					
10/1					

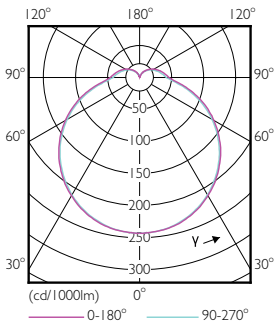
Photometric data



LEDtube 8-15W G13 835 160D IF 6U EasySmart



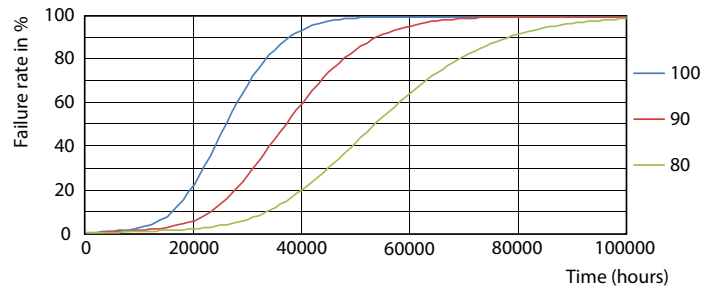
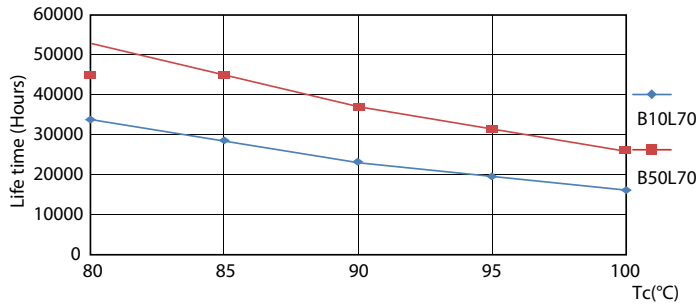
LEDtube PLC/T 12W G24Q 835 32V DIM



LEDtube PLC/T 12W G24Q 827 32V DIM

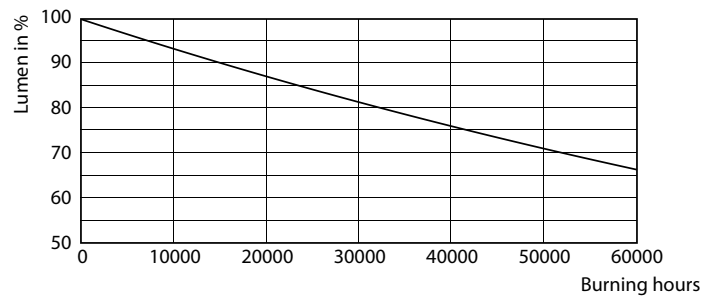
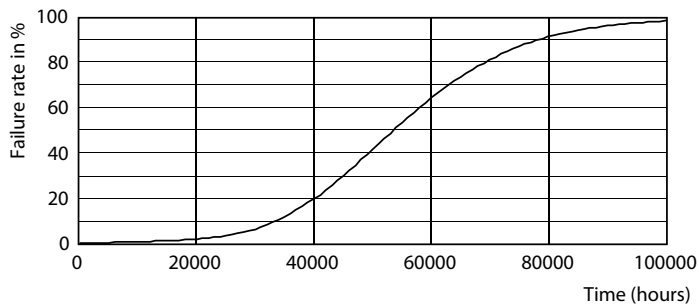
PL-C/T

Lifetime



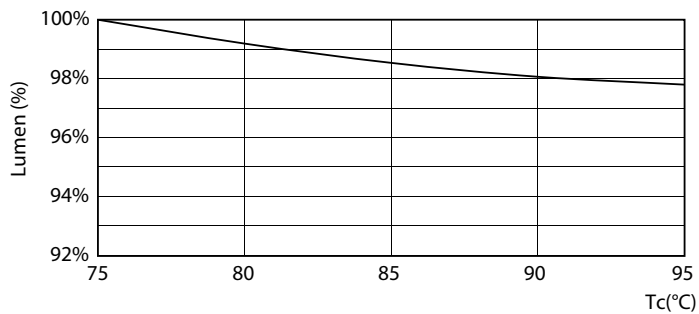
LEDtube PLC/T 12W G24Q 827-840 32H-32V DIM

LEDtube PLC/T 12W G24Q 827-840 32H-32V DIM



LEDtube PLC/T 12W G24Q 827-840 32H-32V DIM

LEDtube PLC/T 12W G24Q 827-840 32H-32V DIM



LEDtube PLC/T 12W G24Q 827-840 32V DIM

