



T5

11T5HE/34-835/IF14/G/DIM 10/1

Philips T5 LED tubes offer an affordable, energy saving retrofit solution. The T5 lamps have been engineered to withstand the test of time with a 50,000-hour lifetime and a limited 5-year warranty to back it up. The lighting performance effectively replaces conventional fluorescent T5 HO or T5 HE lamps. Available in either InstantFit (Type A or Type C) or MainsFit (Type B / Ballast bypass), Philips T5 TLEDs provide a variety of options for any application.

Product data

General Information		Lamp Current (Min)	
Base	G5 [G5]	60 mA	
EU RoHS compliant	Yes	Starting Time (Nom)	
Nominal Lifetime (Nom)	50000 h	0.5 s	
Switching Cycle	50000X	Warm Up Time to 60% Light (Nom)	
		0.5 s	
		UL Type	
		Type A - works on ballast	
		Power Factor (Nom)	
		0.9	
		Voltage (Nom)	
		50-80 V	
Light Technical		Temperature	
Color Code	835 [CCT of 3500K]	T-Ambient (Max)	
Beam Angle (Nom)	200 °	45 °C	
Initial lumen (Nom)	1400 lm	T-Ambient (Min)	
Color Designation	White (WH)	-20 °C	
Correlated Color Temperature (Nom)	3500 K	T-Storage (Max)	
Luminous Efficacy (rated) (Nom)	127.00 lm/W	65 °C	
Color Consistency	<6	T-Storage (Min)	
Color Rendering Index (Nom)	82	-40 °C	
LLMF At End Of Nominal Lifetime (Nom)	70 %	T-Case Maximum (Nom)	
		70 °C	
Operating and Electrical		Controls and Dimming	
Input Frequency	40000-110000 Hz	Dimmable	
Power (Rated) (Nom)	11 W	Yes	
Lamp Current (Max)	400 mA		
		Mechanical and Housing	
		Product Length	
		900 mm	

T5

Approval and Application

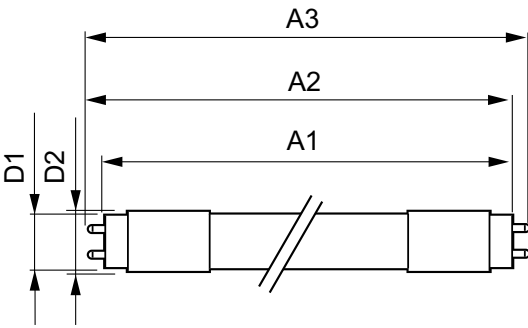
Energy Efficiency Label (EEL)	Not applicable
Energy Saving Product	Yes
Approbation Marks	UL certificate RoHS compliance
Energy Consumption kWh/1000 h	- kWh

Product Data

Order product name	11T5HE/34-835/IF14/G/DIM 10/1
EAN/UPC - Product	046677476465

Order code	476465
Numerator - Quantity Per Pack	1
Numerator - Packs per outer box	10
Material Nr. (12NC)	929001823604
Net Weight (Piece)	0.110 kg
Model Number	9290018236

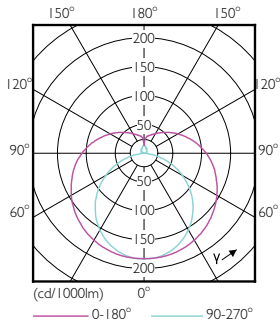
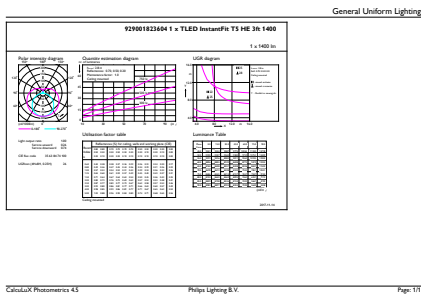
Dimensional drawing



TLED 900mm HFV11.5-21W 1500lm 3500K ND

Product	D1	D2	A1	A2	A3
11T5HE/34-835/IF14/G/DIM 10/1	15.3 mm	18.4 mm	847.8 mm	854.9 mm	862 mm

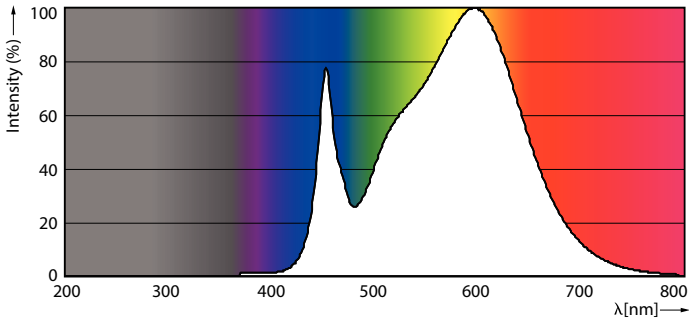
Photometric data



LEDtube 11W G5 835 200D DIM IF14

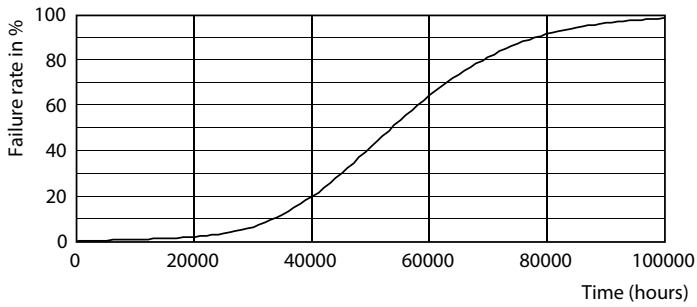
LEDtube 8W G5 830 200D DIM IF10

Photometric data

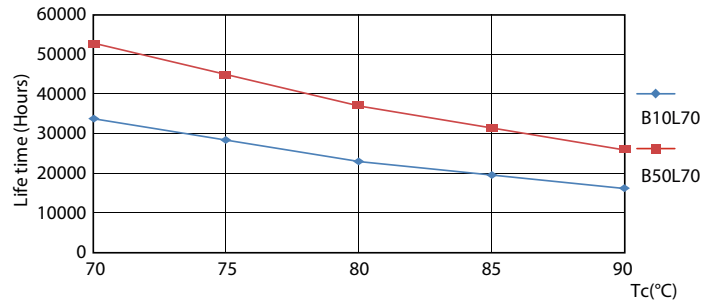


LEDtube 11W G5 835 200D DIM IF14

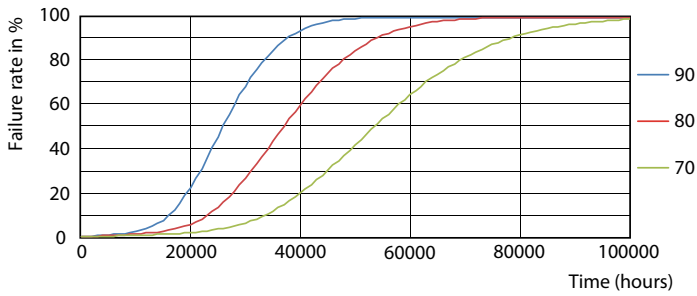
Lifetime



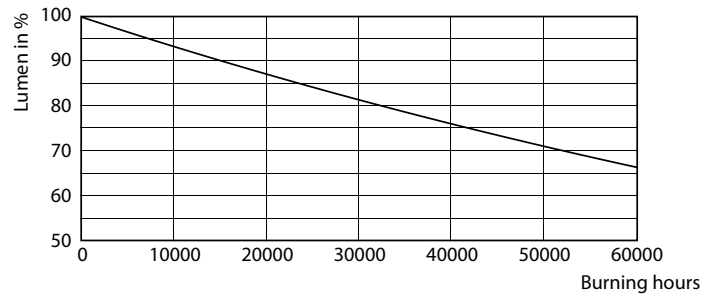
LEDtube 8-14W G5 830-850 200D DIM IF10-21



LEDtube 8-14W G5 830-850 200D DIM IF10-21



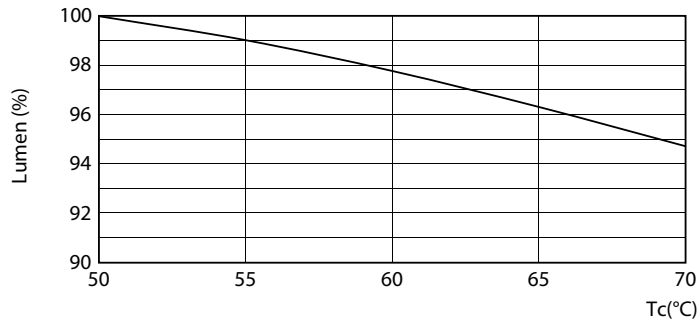
LEDtube 8-14W G5 830-850 200D DIM IF10-21



LEDtube 8-14W G5 830-850 200D DIM IF10-21

T5

Lifetime



LEDtube 8-14W G5 830-850 200D DIM IF10-21

