



T5

11T5HE/34-840/IF15/G/DIM 10/1

Philips LED T5 InstantFit Lamps are an ideal energy saving choice for existing linear fluorescent fixtures.

Product data

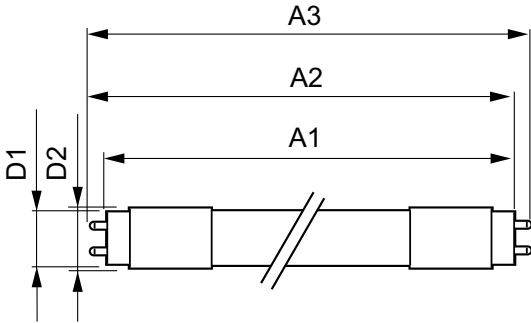
General Information		Power Factor (Nom)		0.9
Base	G5 [G5]	Voltage (Nom)		50-80 V
EU RoHS compliant	Yes	Temperature		
Nominal Lifetime (Nom)	50000 h	T-Ambient (Max)	45 °C	
Switching Cycle	50000X	T-Ambient (Min)	-20 °C	
Light Technical		T-Storage (Max)	65 °C	
Color Code	841 [CCT of 4100K (841)]	T-Storage (Min)	-40 °C	
Beam Angle (Nom)	200 °	T-Case Maximum (Nom)	70 °C	
Initial lumen (Nom)	1500 lm	Controls and Dimming		
Color Designation	Cool White (CW)	Dimmable	Yes	
Correlated Color Temperature (Nom)	4000 K	Mechanical and Housing		
Luminous Efficacy (rated) (Nom)	136.00 lm/W	Product Length	900 mm	
Color Consistency	<6	Approval and Application		
Color Rendering Index (Nom)	82	Energy Efficiency Label (EEL)	Not applicable	
LLMF At End Of Nominal Lifetime (Nom)	70 %	Energy Saving Product	Yes	
Operating and Electrical		Approbation Marks	UL certificate RoHS compliance	
Input Frequency	40000-110000 Hz	Energy Consumption kWh/1000 h	- kWh	
Power (Rated) (Nom)	11 W	Product Data		
Lamp Current (Max)	400 mA	Order product name	11T5HE/34-840/IF15/G/DIM 10/1	
Lamp Current (Min)	60 mA	EAN/UPC - Product	046677476472	
Starting Time (Nom)	0.5 s			
Warm Up Time to 60% Light (Nom)	0.5 s			
UL Type	Type A - works on ballast			

T5

Order code	476473
Numerator - Quantity Per Pack	1
Numerator - Packs per outer box	10
Material Nr. (12NC)	929001823704

Net Weight (Piece)	0.110 kg
Model Number	9290018237

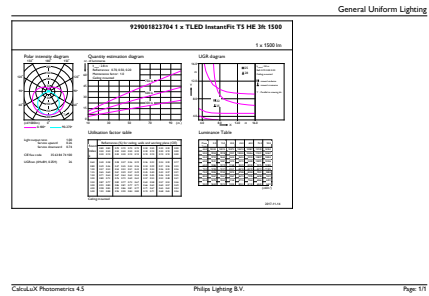
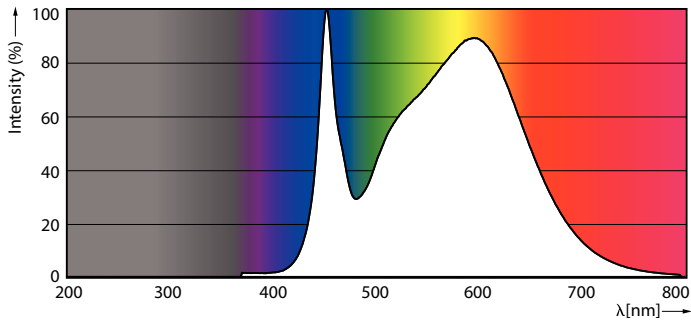
Dimensional drawing



TLED 900mm HFV11.5-21W 1500lm 4000K ND

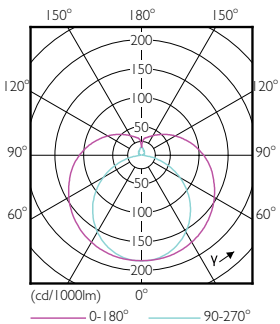
Product	D1	D2	A1	A2	A3
11T5HE/34-840/IF15/G/DIM	15.3 mm	18.4 mm	847.8 mm	854.9 mm	862 mm
10/1					

Photometric data



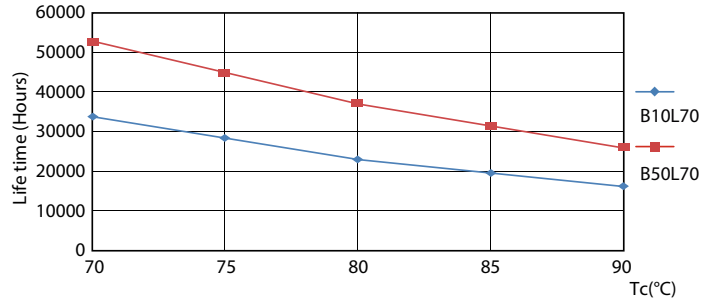
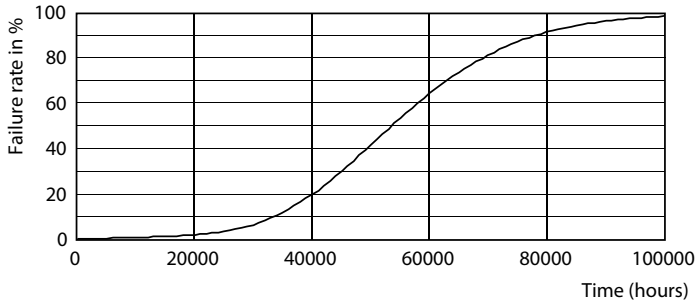
LEDtube PLC 400mm 16-5W 2G11 840 2100lm

LEDtube 11W G5 840 200D DIM IF15

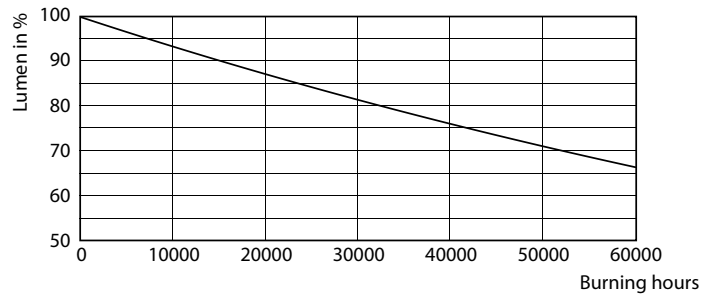
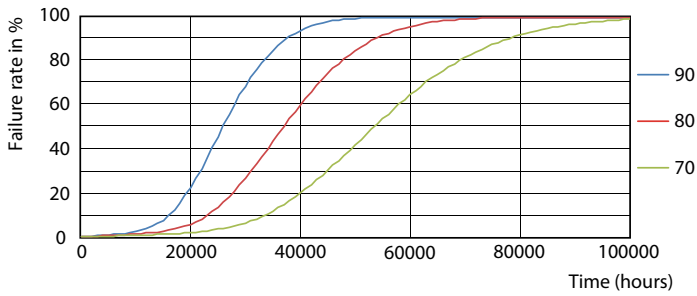


LEDtube 8W G5 830 200D DIM IF10

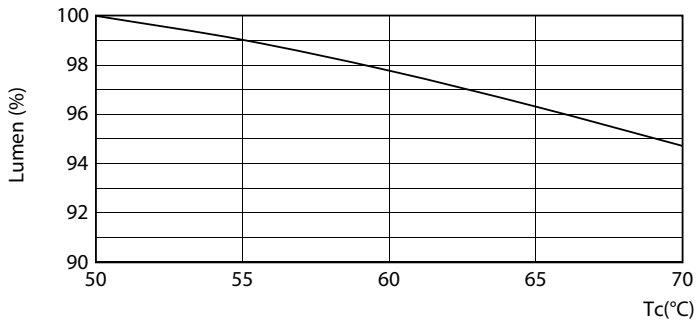
Lifetime



LEDtube 8-14W G5 830-850 200D DIM IF10-21



LEDtube 8-14W G5 830-850 200D DIM IF10-21



LEDtube 8-14W G5 830-850 200D DIM IF10-21

