



InstantFit (UL Type-A) T5

14T5HE/46-835/IF20/G/DIM 10/1

The InstantFit TLED lamps provide hassle-free installation with simple lamp-for-lamp replacements. They deliver what we promise, with at least 40% energy savings, flicker-free performance, and the life you would expect. Other lamps claim compatibility but only InstantFit (UL Type-A) has been proven to work with over 200 ballasts and drivers, delivering even light output, with proven energy savings and a long average lifetime. End users will be delighted being under these comfortable and high quality InstantFit lamps with no visible flicker and optimized optics. Energy managers will enjoy the InstantFit lamps too as they can count the savings delivered by our lamps. To enjoy more energy savings, the InstantFit lamps can be paired with the Advance TLED drivers to create a Type C system.

Product data

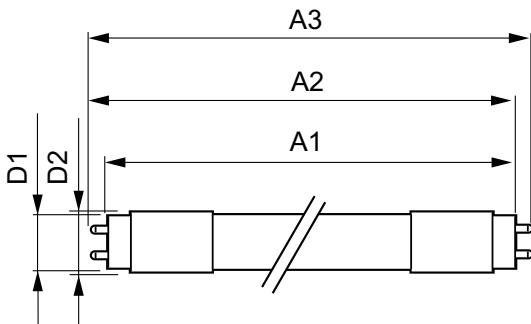
General Information		Color rendering index (CRI)		82
Cap-Base	G5 [G5]	LLMF At End Of Nominal Lifetime (Nom)		70 %
Nominal lifetime	50,000 hour(s)	Operating and Electrical		
Switching Cycle	50,000	Line Frequency	40000-110000 Hz	
Lighting Technology	LED	Input Frequency	40000-110000 Hz	
EU RoHS compliant	Yes	Power Consumption	14 W	
Light Technical		Lamp Current (Max)	350 mA	
Color Code	835 [CCT of 3500K]	Lamp Current (Min)	150 mA	
Beam Angle (Nom)	200 degree(s)	Wattage Equivalent	28 W	
Luminous Flux	2,000 lm	Starting Time (Nom)	0.5 s	
Color Designation	White (WH)	Warm-up time to 60% light	0.5 s	
Correlated Color Temperature (Nom)	3500 K	Power Factor (Fraction)	0.9	
Luminous Efficacy (rated) (Nom)	142.00 lm/W	Voltage (Nom)	70-105 V	
Color Consistency	<6			

InstantFit (UL Type-A) T5

UL Type	UL Type A
Temperature	
Ambient temperature range	-4 °F to 113 °F
T-Case Maximum (Nom)	158 °F
Controls and Dimming	
Dimmable	Yes
Mechanical and Housing	
Bulb Finish	Frosted
Bulb Material	Glass
Product Length	47-1/4 inch
Bulb Shape	T5
Approval and Application	
Energy Saving Product	Yes
Approval Marks	UL certificate RoHS compliance DLC compliance

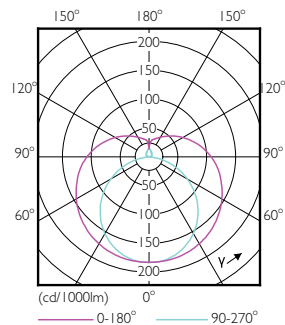
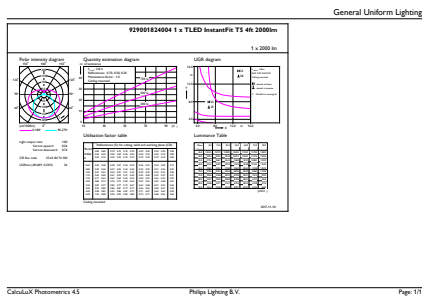
Energy Consumption kWh/1000 h	- kWh
Energy Certifications	DLC Standard
Application Conditions	
can it be used in closed luminaires	Yes
Product Data	
Order product name	14T5HE/46-835/IF20/G/DIM 10/1
Full product name	14T5HE/46-835/IF20/G/DIM 10/1
Order code	476507
Material Nr. (12NC)	929001824004
Numerator - Quantity Per Pack	1
EAN/UPC - Product/Case	046677476502
Numerator - Packs per outer box	10
EAN/UPC - Case	50046677476507

Dimensional drawing



Product	D1	D2	A1	A2	A3
14T5HE/46-835/IF20/G/DIM 10/1	5/8 inch	3/4 inch	45-3/16 inch	45-1/2 inch	45-3/4 inch

Photometric data

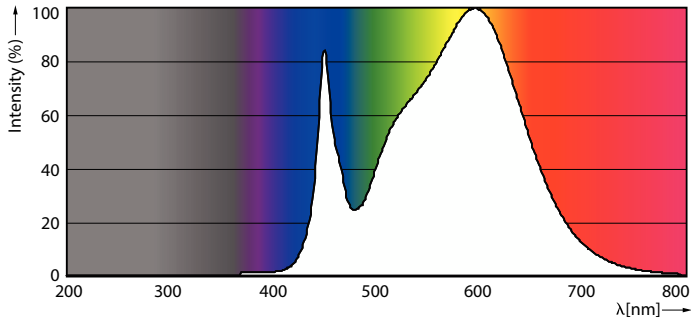


General uniform lighting - 14T5HE/46-835/IF20/G/DIM 10/1

Light Distribution Diagram - 14T5HE/46-835/IF20/G/DIM 10/1

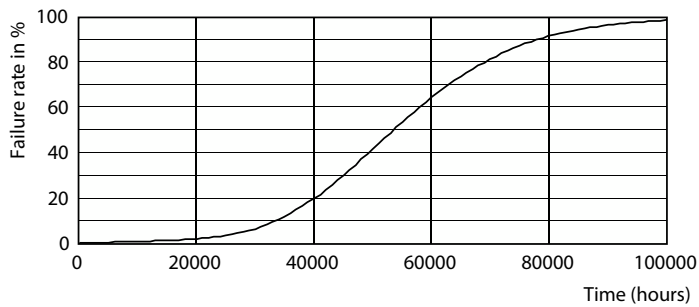
InstantFit (UL Type-A) T5

Photometric data

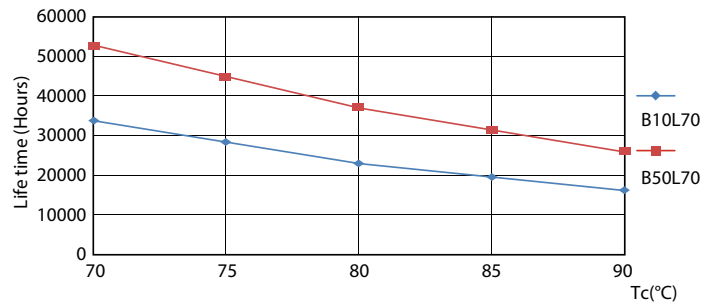


Spectral Power Distribution Colour - 14T5HE/46-835/IF20/G/DIM 10/1

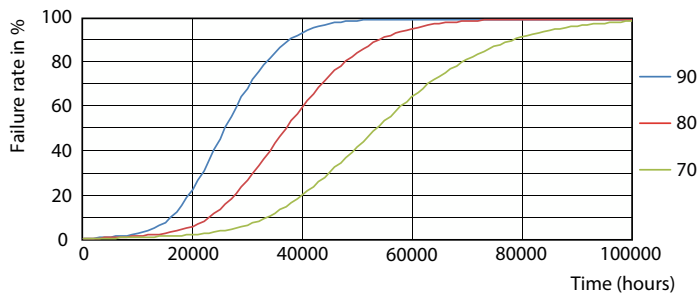
Lifetime



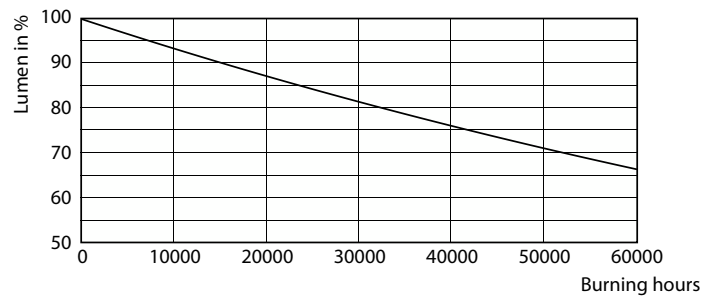
Life Expectancy Diagram - 14T5HE/46-835/IF20/G/DIM 10/1



Life Expectancy Diagram - 14T5HE/46-835/IF20/G/DIM 10/1



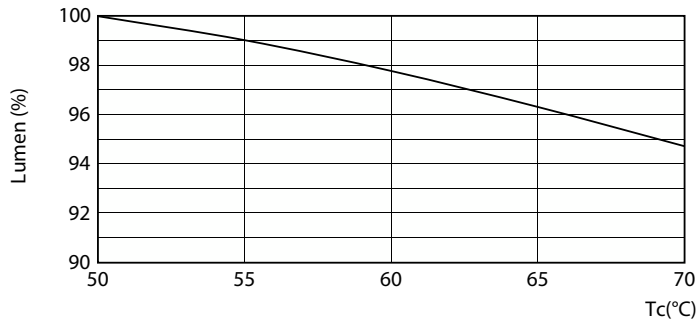
Life Expectancy Diagram - 14T5HE/46-835/IF20/G/DIM 10/1



Lumen Maintenance Diagram - 14T5HE/46-835/IF20/G/DIM 10/1

InstantFit (UL Type-A) T5

Lifetime



Lumen Maintenance Diagram - 14T5HE/46-835/IF20/G/DIM 10/1

