



A-Shape LED

16A21/PER/830/P/E26/DIM 6/1FB

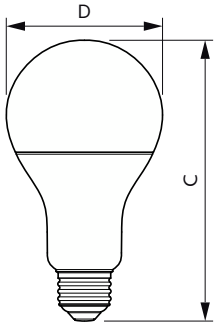
Philips A-shape LED lamps are the LED alternative to standard incandescents. It provides beautiful light and dependable performance you expect from LED at an affordable price.

Product data

General Information		Starting Time (Nom)	
Cap-Base	E26 [Single Contact Medium Screw]		0.5 s
Nominal lifetime	15,000 hour(s)	Warm-up time to 60% light	0.5 s
Switching Cycle	50,000	Power Factor (Fraction)	0.8
Lighting Technology	LED	Voltage (Nom)	120 V
EU RoHS compliant	Yes		
Light Technical		Temperature	
Color Code	830 [CCT of 3000K]	T-Case Maximum (Nom)	194 °F
Beam Angle (Nom)	250 degree(s)		
Luminous Flux	1,600 lm	Controls and Dimming	
Color Designation	White (WH)	Dimmable	Yes
Correlated Color Temperature (Nom)	3000 K		
Luminous Efficacy (rated) (Nom)	100.00 lm/W	Mechanical and Housing	
Color Consistency	<6	Bulb Finish	Frosted
Color rendering index (CRI)	80	Bulb Shape	A21 [A 21mm]
LLMF At End Of Nominal Lifetime (Nom)	70 %		
Operating and Electrical		Product Data	
Line Frequency	60 Hz	Order product name	16A21/PER/830/P/E26/DIM 6/1FB
Input Frequency	60 Hz	Full product name	16A21/PER/830/P/E26/DIM 6/1FB
Power Consumption	16 W	Order code	479899
Lamp Current (Nom)	180 mA	Material Nr. (12NC)	929001836904
Wattage Equivalent	100 W	Numerator - Quantity Per Pack	1
		EAN/UPC - Product/Case	046677479893
		Numerator - Packs per outer box	6
		EAN/UPC - Case	50046677479898

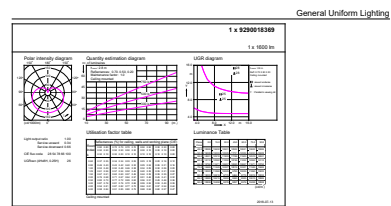
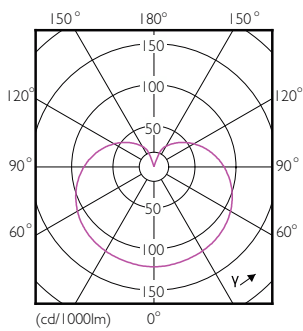
A-Shape LED

Dimensional drawing



Product	D	C
16A21/PER/830/P/E26/DIM 6/1FB	78 mm	140 mm

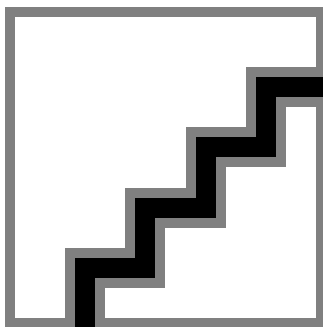
Photometric data



General Uniform Lighting
© 2017 Philips Lighting B.V. Page: 1/7

Light Distribution Diagram - 16A21/PER/830/P/E26/DIM 6/1FB

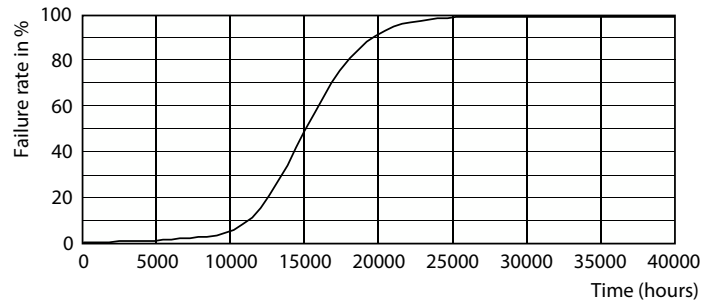
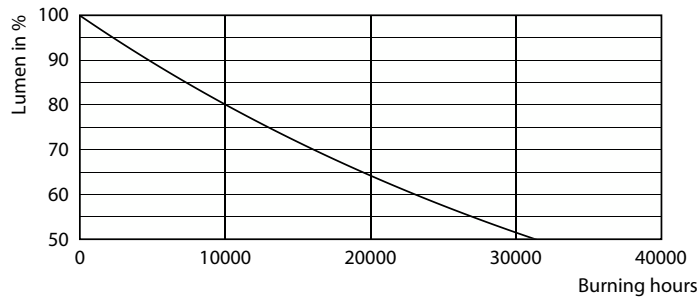
General uniform lighting - 16A21/PER/830/P/E26/DIM 6/1FB



Spectral Power Distribution Colour - 16A21/PER/830/P/E26/DIM 6/1FB

A-Shape LED

Lifetime



Lumen Maintenance Diagram - 16A21/PER/830/P/E26/DIM 6/1FB

Life Expectancy Diagram - 16A21/PER/830/P/E26/DIM 6/1FB

