



A-Shape LED

12A21/PER/827-22/P/E26/WG 6/1FB

Philips A-shape LED lamps are the LED alternative to standard incandescents. It provides beautiful light and dependable performance you expect from LED at an affordable price.

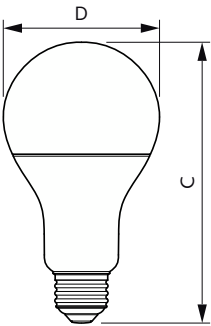
Product data

General Information	
Cap-Base	E26 [Single Contact Medium Screw]
Nominal lifetime	15,000 hour(s)
Switching Cycle	50,000
Lighting Technology	LED
EU RoHS compliant	Yes
Light Technical	
Color Code	822-827 [tunable warm white]
Beam Angle (Nom)	250 degree(s)
Luminous Flux	1,100 lm
Color Designation	Warm White (WW)
Luminous Efficacy (rated) (Nom)	91.00 lm/W
Color Consistency	<6
Color rendering index (CRI)	80
LLMF At End Of Nominal Lifetime (Nom)	70 %
Operating and Electrical	
Line Frequency	60 Hz
Input Frequency	60 Hz
Power Consumption	12 W
Lamp Current (Nom)	155 mA
Wattage Equivalent	75 W
Starting Time (Nom)	0.5 s

Warm-up time to 60% light	0.5 s
Power Factor (Fraction)	0.8
Voltage (Nom)	120 V
Temperature	
T-Case Maximum (Nom)	194 °F
Controls and Dimming	
Dimmable	Yes
Mechanical and Housing	
Bulb Finish	Frosted
Bulb Shape	A21 [A 21mm]
Product Data	
Order product name	12A21/PER/827-22/P/E26/WG 6/1FB
Full product name	12A21/PER/827-22/P/E26/WG 6/1FB
Order code	479469
Material Nr. (12NC)	929001837504
Numerator - Quantity Per Pack	1
EAN/UPC - Product/Case	046677479466
Numerator - Packs per outer box	6
EAN/UPC - Case	50046677479461

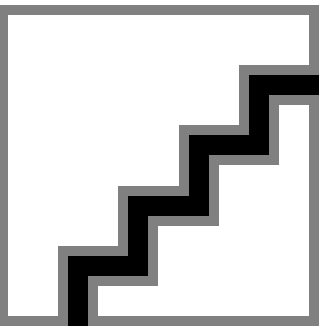
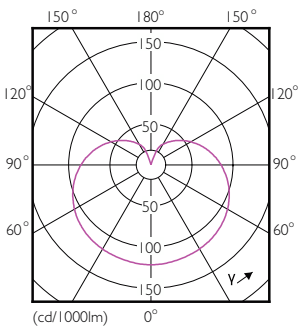
A-Shape LED

Dimensional drawing



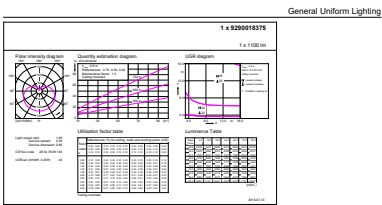
Product	D	C
12A21/PER/827-22/P/E26/WG 6/1FB	78 mm	140 mm

Photometric data



Light Distribution Diagram - 12A21/PER/827-22/P/E26/WG 6/1FB

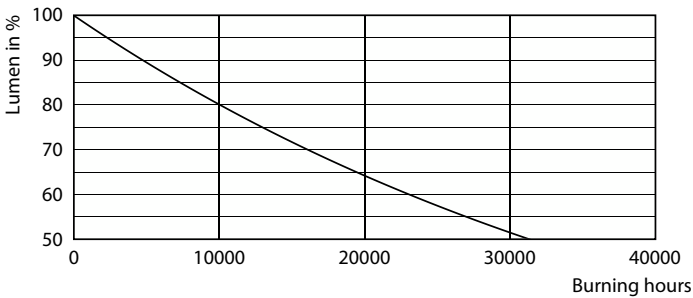
Spectral Power Distribution Colour - 12A21/PER/827-22/P/E26/WG 6/1FB



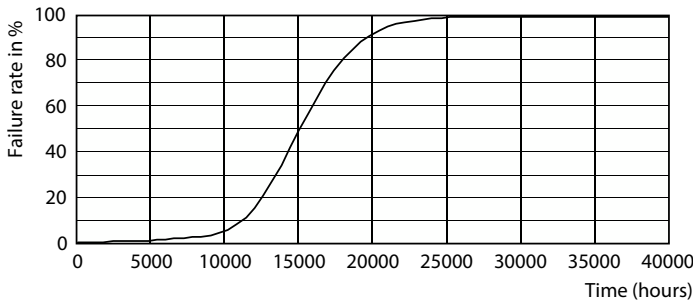
General uniform lighting - 12A21/PER/827-22/P/E26/WG 6/1FB

A-Shape LED

Lifetime



Lumen Maintenance Diagram - 12A21/PER/827-22/P/E26/WG 6/1FB



Life Expectancy Diagram - 12A21/PER/827-22/P/E26/WG 6/1FB

