



Standard LED bulbs

LEDBulb 9W E27 3000K W A19 1PF/6 MX

Standard LED bulbs are compatible with existing fixtures with a E27 holder and are designed for retrofit replacement of incandescent, halogen and energy saving bulbs. They deliver huge energy savings and minimize maintenance costs. The Standard LED bulb is the perfect bulb for your basic lighting needs. It provides the beautiful light and performance you expect from the LED technology at an affordable price.

Product data

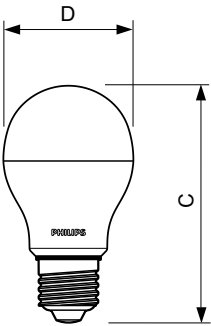
General Information		Wattage Equivalent	
Cap-Base	E27 [E27]	60 W	
Nominal lifetime	25,000 hour(s)	Starting Time (Nom)	
Switching Cycle	50,000	0.5 s	
Lighting Technology	LED	Warm-up time to 60% light	
EU RoHS compliant	Yes	0.5 s	
Light Technical		Power Factor (Fraction)	
Color Code	830 [CCT of 3000K]	0.7	
Beam Angle (Nom)	150 degree(s)	Voltage (Nom)	
Luminous Flux	806 lm	100-240 V	
Color Designation	White (WH)	Temperature	
Correlated Color Temperature (Nom)	3000 K	T-Case Maximum (Nom)	
Luminous Efficacy (rated) (Nom)	89.00 lm/W	75 °C	
Color Consistency	<6	Controls and Dimming	
Color rendering index (CRI)	80	Dimmable	
LLMF At End Of Nominal Lifetime (Nom)	70 %	No	
Operating and Electrical		Mechanical and Housing	
Line Frequency	50 to 60 Hz	Bulb Finish	
Input Frequency	50 to 60 Hz	Frosted	
Power Consumption	9 W	Bulb Shape	
		A19 [A 19mm]	
		Approval and Application	
		Energy Consumption kWh/1000 h	
		- kWh	
		Product Data	
		Order product name	
		LEDBulb 9W E27 3000K W A19 1PF/6 MX	
		Full product name	
		LEDBulb 9W E27 3000K W A19 1PF/6 MX	

Standard LED bulbs

Full product code	871869681619600
Order code	929001838542
Material Nr. (12NC)	929001838542
Numerator - Quantity Per Pack	1
EAN/UPC - Product/Case	8718696816196

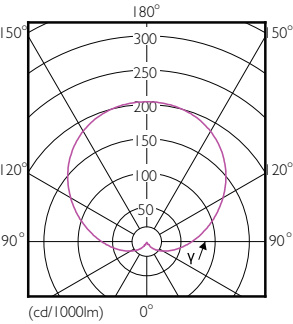
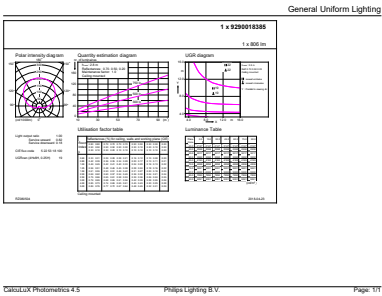
Numerator - Packs per outer box	6
EAN/UPC - Case	8718696816202

Dimensional drawing



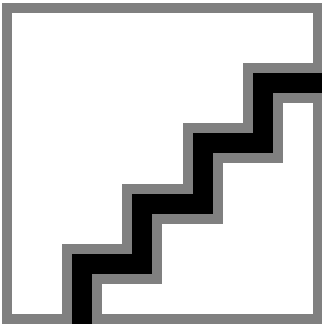
Product	LEDBulb 9W E27 3000K W A19 1PF/6 MX
---------	-------------------------------------

Photometric data



General uniform lighting - LEDBulb 9W E27 3000K W A19 1PF/6 MX

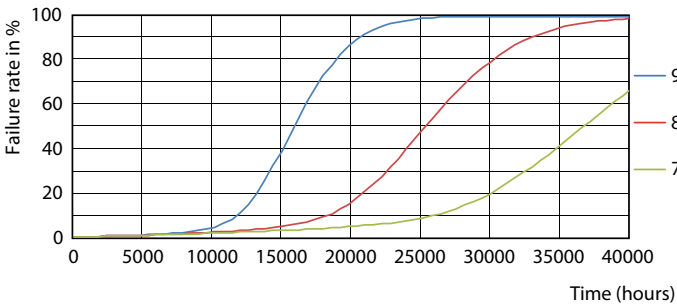
Light Distribution Diagram - LEDBulb 9W E27 3000K W A19 1PF/6 MX



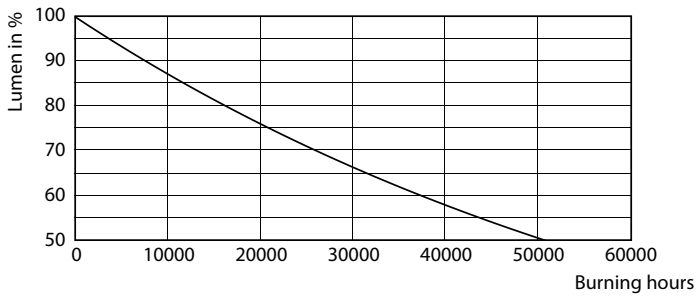
Spectral Power Distribution Colour - LEDBulb 9W E27 3000K W A19 1PF/6 MX

Standard LED bulbs

Lifetime



Life Expectancy Diagram - LEDBulb 9W E27 3000K W A19 1PF/6 MX



Lumen Maintenance Diagram - LEDBulb 9W E27 3000K W A19 1PF/6 MX

