



# T8

## 14T8/COR/48-830/MF17/G 10/1

Our TLEDs are available in InstantFit (Type A / Type C) or MainsFit (Ballast bypass / Type B) versions. The InstantFit lamps work on a broad variety of ballasts and LED drivers. Only InstantFit has over 15,000 lamp & ballast combinations delivering even light output, energy savings and a long lifetime. Our MainsFit products feature a double-ended design, simplifying installation while a proprietary safety circuit minimizes a shock risk. Lamp sizes range from 2-foot to 8-foot and U-bend with a variety of lumen outputs.

### Product data

General Information		Input Frequency	
Cap-Base	G13 [Medium Bi-Pin Fluorescent]		50 to 60 Hz
Nominal lifetime	50,000 hour(s)	Power Consumption	14 W
Switching Cycle	50,000	Lamp Current (Max)	130 mA
Lighting Technology	LED	Lamp Current (Min)	47 mA
EU RoHS compliant	Yes	Starting Time (Nom)	0.5 s
		Warm-up time to 60% light	0.5 s
		Power Factor (Fraction)	0.9
Light Technical		Voltage (Nom)	120-277 V
Color Code	830 [CCT of 3000K]	UL Type	Type B - bypass the ballast
Beam Angle (Nom)	240 degree(s)		
Luminous Flux	1,700 lm	Temperature	
Color Designation	White (WH)	Ambient temperature range	-4 °F to 113 °F
Correlated Color Temperature (Nom)	3000 K	T-Case Maximum (Nom)	158 °F
Luminous Efficacy (rated) (Nom)	121.00 lm/W		
Color Consistency	<6	Controls and Dimming	
Color rendering index (CRI)	80	Dimmable	No
LLMF At End Of Nominal Lifetime (Nom)	70 %		
Operating and Electrical		Mechanical and Housing	
Line Frequency	50 to 60 Hz	Bulb Material	Glass
		Product Length	47-1/4 inch

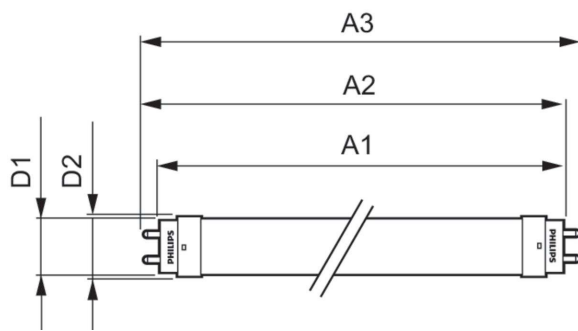
# T8

Bulb Shape	Tube, double-ended
<b>Approval and Application</b>	
Energy Saving Product	Yes
Approval Marks	RoHS compliance UL certificate DLC compliance
Energy Consumption kWh/1000 h	- kWh

<b>Product Data</b>	
Order product name	14T8/COR/48-830/MF17/G 10/1

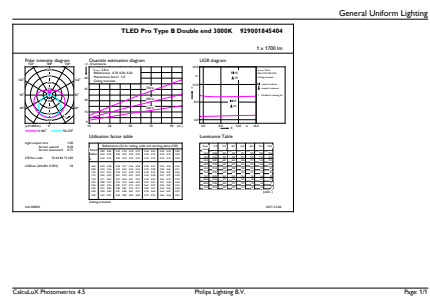
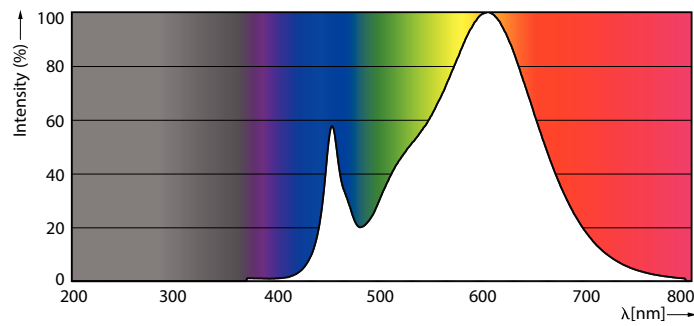
Full product name	14T8/COR/48-830/MF17/G 10/1
Order code	477315
Material Nr. (12NC)	929001845434
Numerator - Quantity Per Pack	1
EAN/UPC - Product/Case	046677477318
Numerator - Packs per outer box	10
EAN/UPC - Case	50046677477313

## Dimensional drawing



Product	D1	D2	A1	A2	A3
14T8/COR/48-830/ MF17/G 10/1	1-1/16 inch	1-1/8 inch	47-3/16 inch	47-1/2 inch	47-3/4 inch

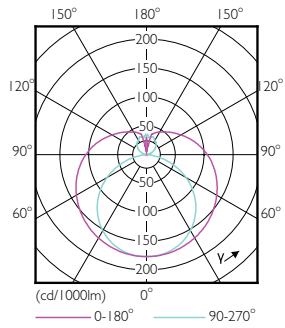
## Photometric data



Spectral Power Distribution Colour - 14T8/COR/48-830/MF17/G 10/1

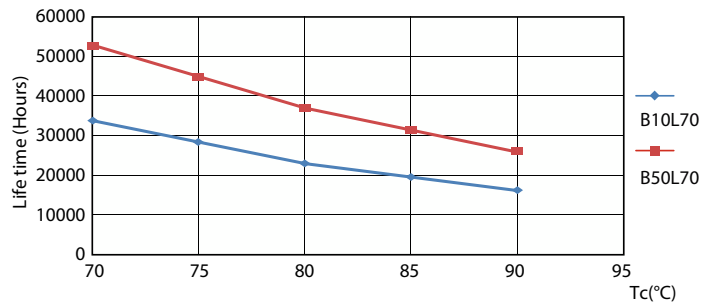
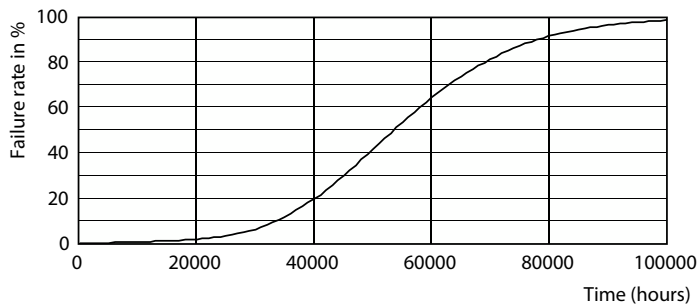
General uniform lighting - 14T8/COR/48-830/MF17/G 10/1

Photometric data



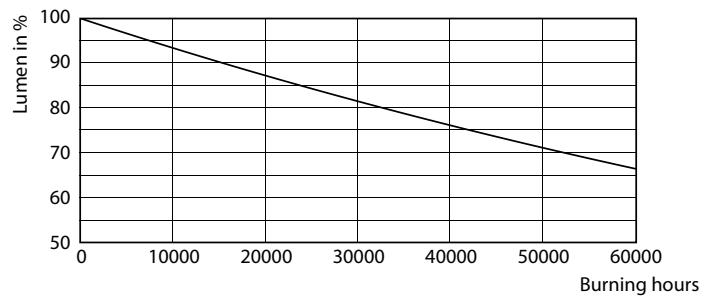
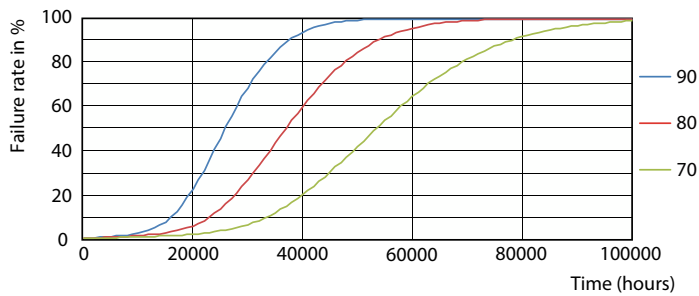
Light Distribution Diagram - 14T8/COR/48-830/MF17/G 10/1

Lifetime



Life Expectancy Diagram - 14T8/COR/48-830/MF17/G 10/1

Life Expectancy Diagram - 14T8/COR/48-830/MF17/G 10/1

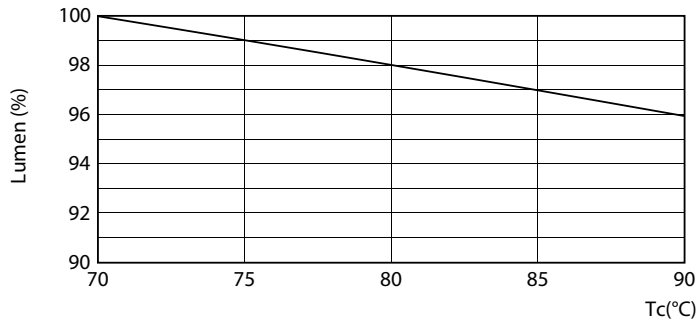


Life Expectancy Diagram - 14T8/COR/48-830/MF17/G 10/1

Lumen Maintenance Diagram - 14T8/COR/48-830/MF17/G 10/1

# T8

## Lifetime



Lumen Maintenance Diagram - 14T8/COR/48-830/MF17/G 10/1

