



CorePro LEDtube MainsFit T8

14T8PRO/48-840/BB18/G 10/1 FB

Philips CorePro MainsFit (UL Type-B) T8 LED lamps use a double-ended design which significantly simplifies installation, saving installation time and costs. This ballast bypass product replaces either T8 or T12 lamps in fixtures containing shunted or non-shunted G13 (medium bi-pin) lamp holders for over 40% energy savings.

Product data

General Information		Power (Rated) (Nom)	
Cap-Base	G13 [Medium Bi-Pin Fluorescent]		14 W
RoHS mark	RoHS mark	Lamp Current (Max)	130 mA
Nominal Lifetime (Nom)	50000 h	Lamp Current (Min)	47 mA
Switching Cycle	50000X	Starting Time (Nom)	0.5 s
B50L70	50000 h	Warm Up Time to 60% Light (Nom)	0.5 s
Light Technical		Power Factor (Nom)	0.9
Color Code	841 [CCT of 4100K (841)]	Voltage (Nom)	120-277 V
Beam Angle (Nom)	240 °	Temperature	
Initial lumen (Nom)	1800 lm	T-Ambient (Max)	45 °C
Luminous Flux (Rated) (Nom)	1800 lm	T-Ambient (Min)	-20 °C
Rated Beam Angle	240 °	T-Storage (Max)	65 °C
Correlated Color Temperature (Nom)	4000 K	T-Storage (Min)	-40 °C
Color Consistency	<6	T-Case Maximum (Nom)	70 °C
Color Rendering Index (Nom)	80	Controls and Dimming	
LLMF At End Of Nominal Lifetime (Nom)	70 %	Dimmable	No
Operating and Electrical			
Input Frequency	50 to 60 Hz		

CorePro LEDtube MainsFit T8

Mechanical and Housing

Product Length	1200 mm
----------------	---------

Approval and Application

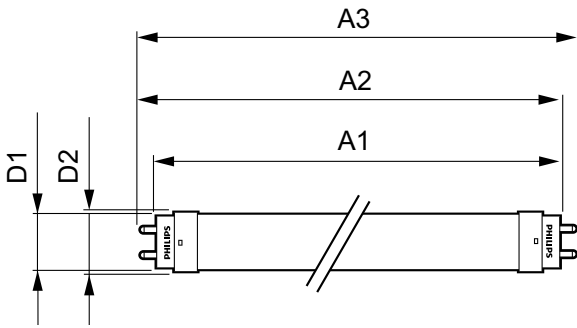
Energy Saving Product	Yes
Approbation Marks	UL certificate RoHS compliance DLC compliance
DesignLights Consortium Qualified Product List	DesignLights Consortium Qualified Product List

Product Data

Order product name	14T8PRO/48-840/BB18/G 10/1 FB
--------------------	-------------------------------

EAN/UPC - Product	046677477332
Order code	477331
Numerator - Quantity Per Pack	1
Numerator - Packs per outer box	10
Material Nr. (12NC)	929001845604
Net Weight (Piece)	0.210 kg
Model Number	9290018456

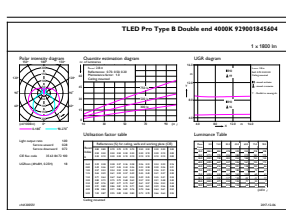
Dimensional drawing



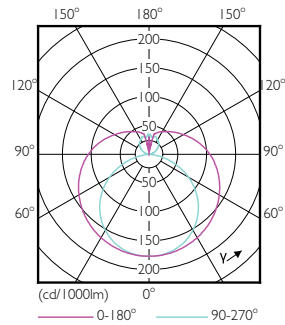
TLED IF CorePro 4ft 1800lm 4000K

Product	D1	D2	A1	A2	A3
14T8PRO/48-840/BB18/G 10/1 FB	25.7 mm	28 mm	1198 mm	1205 mm	1212 mm

Photometric data



CalcuX Photometrics 4.5 Philips Lighting B.V. Page 1/17

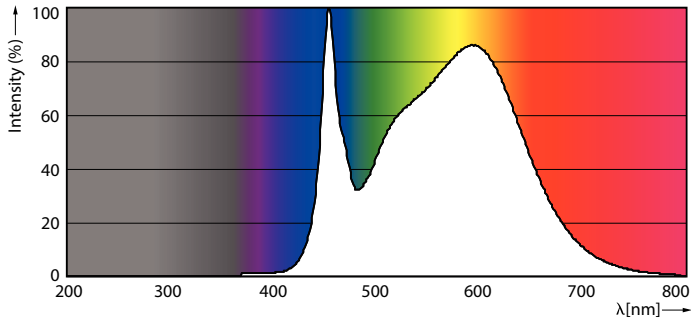


LEDtube 14W G13 840 ND BB18

LEDtube 14W G13 830 ND BB17

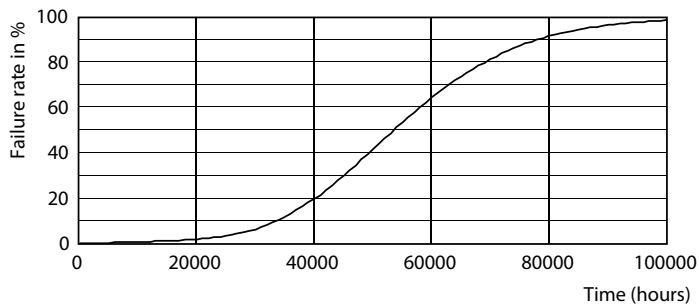
CorePro LEDtube MainsFit T8

Photometric data

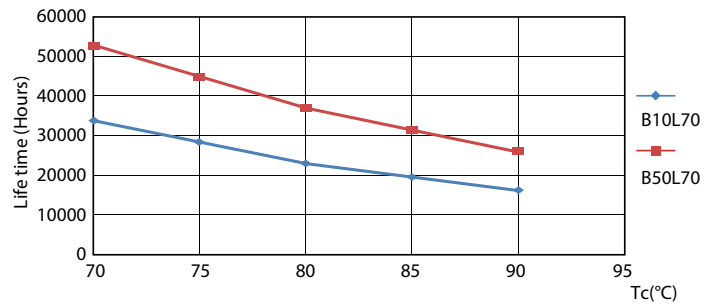


LEDtube 14W G13 840 ND BB18

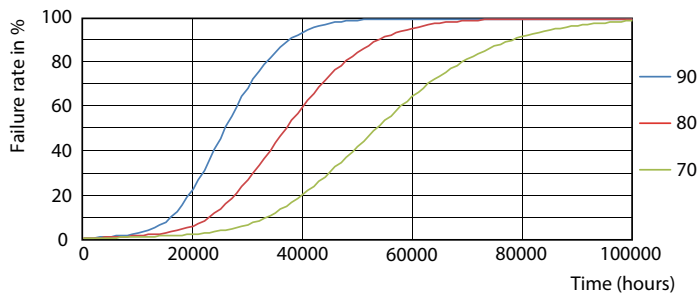
Lifetime



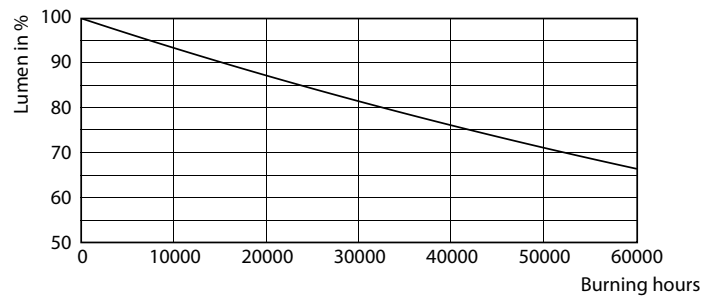
LEDtube 14W G13 830-850 ND BB17-18



LEDtube 14W G13 830-850 ND BB17-18



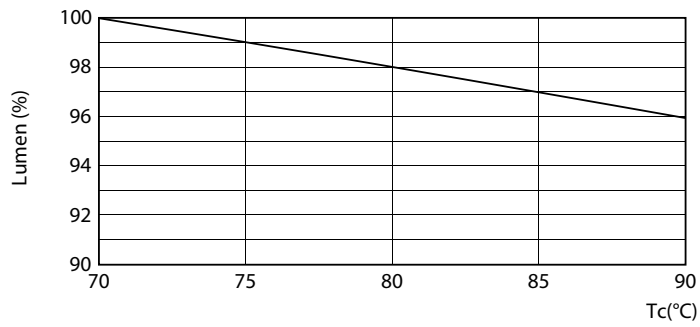
LEDtube 14W G13 830-850 ND BB17-18



LEDtube 14W G13 830-850 ND BB17-18

CorePro LEDtube MainsFit T8

Lifetime



LEDtube 14W G13 830-850 ND BB17-18

