



# T8

## 14T8PRO/48-840/BB18/G 10/1 FB

Our TLEDs are available in InstantFit (Type A / Type C) or MainsFit (Ballast bypass / Type B) versions. The InstantFit lamps work on a broad variety of ballasts and LED drivers. Only InstantFit has over 15,000 lamp & ballast combinations delivering even light output, energy savings and a long lifetime. Our MainsFit products feature a double-ended design, simplifying installation while a proprietary safety circuit minimizes a shock risk. Lamp sizes range from 2-foot to 8-foot and U-bend with a variety of lumen outputs.

### Product data

General Information		Input Frequency	
Cap-Base	G13 [Medium Bi-Pin Fluorescent]	Power Consumption	50 to 60 Hz
Nominal lifetime	50,000 hour(s)	Lamp Current (Max)	14 W
Switching Cycle	50,000	Lamp Current (Min)	130 mA
Lighting Technology	LED	Starting Time (Nom)	47 mA
EU RoHS compliant	Yes	Warm-up time to 60% light	0.5 s
		Power Factor (Fraction)	0.9
		Voltage (Nom)	120-277 V
Light Technical		Temperature	
Color Code	840 [CCT of 4000K]	Ambient temperature range	-20 °C to 45 °C
Beam Angle (Nom)	240 degree(s)	T-Case Maximum (Nom)	70 °C
Luminous Flux	1,800 lm		
Color Designation	Cool White (CW)	Controls and Dimming	
Correlated Color Temperature (Nom)	4000 K	Dimmable	No
Luminous Efficacy (rated) (Nom)	128.00 lm/W		
Color Consistency	<6	Mechanical and Housing	
Color rendering index (CRI)	80	Product Length	1,200 mm
LLMF At End Of Nominal Lifetime (Nom)	70 %	Bulb Shape	Tube, double-ended
Operating and Electrical			
Line Frequency	50 to 60 Hz		

# T8

## Approval and Application

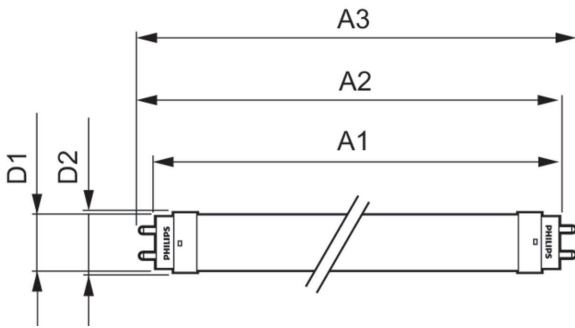
Energy Saving Product	Yes
Approval Marks	UL certificate RoHS compliance DLC compliance
Energy Consumption kWh/1000 h	- kWh
Energy Certifications	DLC Standard

## Product Data

Order product name	14T8PRO/48-840/BB18/G 10/1 FB
--------------------	-------------------------------

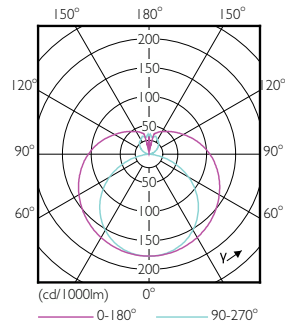
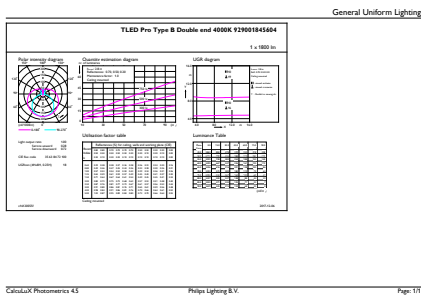
Full product name	14T8PRO/48-840/BB18/G 10/1 FB
Order code	929001845604
Material Nr. (12NC)	929001845604
Numerator - Quantity Per Pack	1
EAN/UPC - Product/Case	046677477332
Numerator - Packs per outer box	10
EAN/UPC - Case	50046677477337

## Dimensional drawing



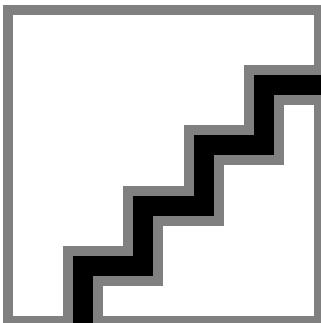
Product	D1	D2	A1	A2	A3
14T8PRO/48-840/BB18/G 10/1 FB	25.7 mm	28 mm	1,198 mm	1,205 mm	1,212 mm

## Photometric data



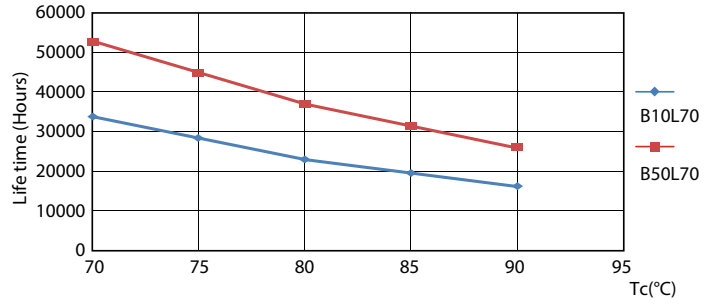
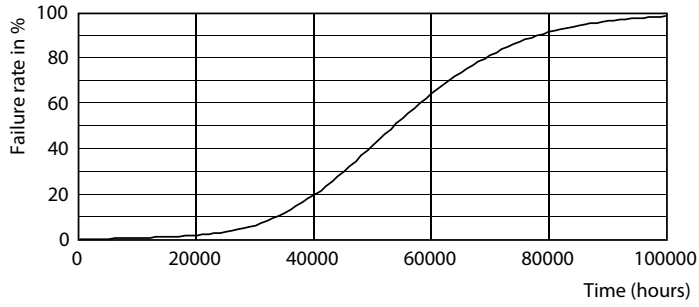
## General uniform lighting - 14T8PRO/48-840/BB18/G 10/1 FB

## Light Distribution Diagram - 14T8PRO/48-840/BB18/G 10/1 FB



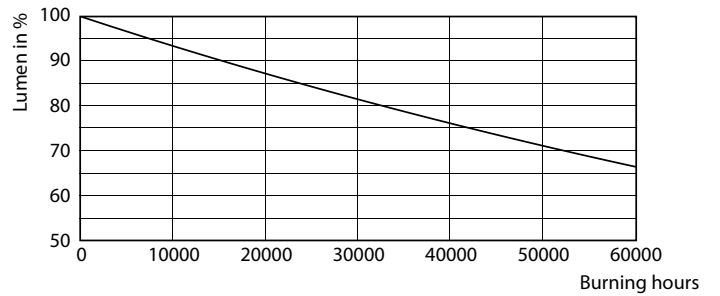
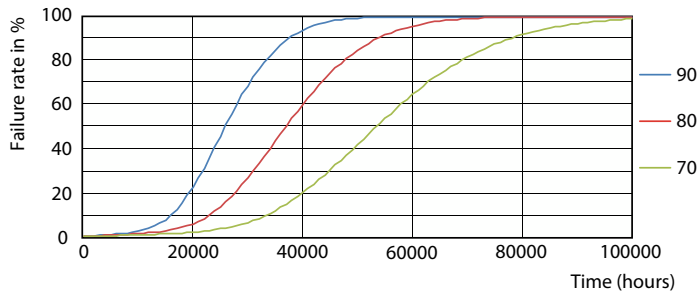
## Spectral Power Distribution Colour - 14T8PRO/48-840/BB18/G 10/1 FB

Lifetime



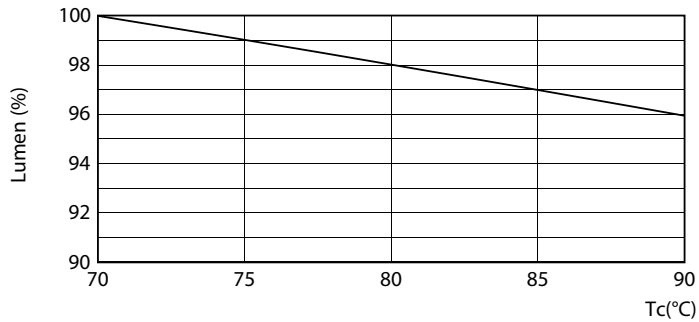
Life Expectancy Diagram - 14T8PRO/48-840/BB18/G 10/1 FB

Life Expectancy Diagram - 14T8PRO/48-840/BB18/G 10/1 FB



Life Expectancy Diagram - 14T8PRO/48-840/BB18/G 10/1 FB

Lumen Maintenance Diagram - 14T8PRO/48-840/BB18/G 10/1 FB



Lumen Maintenance Diagram - 14T8PRO/48-840/BB18/G 10/1 FB

