

T8

12T8/PRO/48-840/IF18/G 10/1 FB

Our TLEDs are available in InstantFit (Type A / Type C) or MainsFit (Ballast bypass / Type B) versions. The InstantFit lamps work on a broad variety of ballasts and LED drivers. Only InstantFit has over 15,000 lamp & ballast combinations delivering even light output, energy savings and a long lifetime. Our MainsFit products feature a double-ended design, simplifying installation while a proprietary safety circuit minimizes a shock risk. Lamp sizes range from 2-foot to 8-foot and U-bend with a variety of lumen outputs.

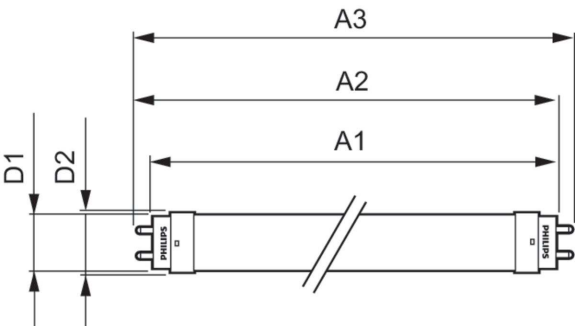
Product data

General Information		Input Frequency	
Cap-Base	G13 [Medium Bi-Pin Fluorescent]	Power Consumption	12 W
Nominal lifetime	50,000 hour(s)	Lamp Current (Max)	260 mA
Switching Cycle	50,000	Lamp Current (Min)	100 mA
Lighting Technology	LED	Starting Time (Nom)	0.5 s
EU RoHS compliant	Yes	Warm-up time to 60% light	0.5 s
Light Technical		Power Factor (Fraction)	0.9
Color Code	840 [CCT of 4000K]	Voltage (Nom)	120-277, 347 V
Beam Angle (Nom)	240 degree(s)	UL Type	Type A - works on ballast Type C - works with dedicated LED driver Type A+C - works with both ballasts and the LED driver
Luminous Flux	1,800 lm	Temperature	
Color Designation	Cool White (CW)	Ambient temperature range	-4 °F to 113 °F
Correlated Color Temperature (Nom)	4000 K	T-Case Maximum (Nom)	122 °F
Luminous Efficacy (rated) (Nom)	150.00 lm/W	Controls and Dimming	
Color Consistency	<6	Dimmable	No
Color rendering index (CRI)	82		
LLMF At End Of Nominal Lifetime (Nom)	70 %		
Operating and Electrical			
Line Frequency	25000-105000 Hz		

Mechanical and Housing	
Product Length	47-1/4 inch
Bulb Shape	Tube, double-ended
Approval and Application	
Energy Saving Product	Yes
Approval Marks	UL certificate RoHS compliance DLC compliance
Energy Consumption kWh/1000 h	- kWh
Energy Certifications	DLC Standard

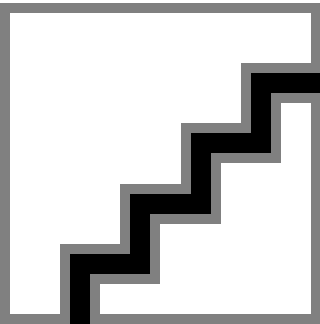
Product Data	
Order product name	12T8/PRO/48-840/IF18/G 10/1 FB
Full product name	12T8/PRO/48-840/IF18/G 10/1 FB
Order code	530485
Material Nr. (12NC)	929001866204
Numerator - Quantity Per Pack	1
EAN/UPC - Product/Case	046677530488
Numerator - Packs per outer box	10
EAN/UPC - Case	50046677530483

Dimensional drawing



Product	D1	D2	A1	A2	A3
12T8/PRO/48-840/ IF18/G 10/1 FB	1-1/16 inch	1-1/16 inch	47-3/16 inch	47-1/2 inch	47-3/4 inch

Photometric data



Spectral Power Distribution Colour - 12T8/PRO/48-840/IF18/G 10/1 FB

General Uniform Lighting

A set of photometric data charts for the product 1 x TLED 12W 4000K 240D F290018642. The charts include a beam spread diagram, a quantity calculator, a VCF diagram, a luminous flux table, and a luminous intensity table. The beam spread diagram shows a stepped beam profile. The quantity calculator shows a grid of values. The VCF diagram shows a curve of values. The luminous flux table and luminous intensity table provide numerical data for the product.

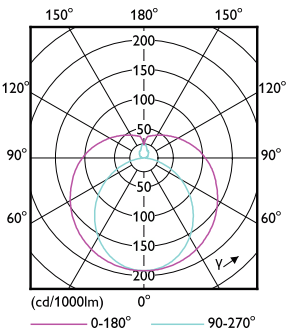
Beam diameter (mm)	Luminous flux (lm)
100	100
150	225
200	400
250	625
300	900
350	1225
400	1600
450	2025
500	2500
550	3025
600	3600
650	4225
700	4900
750	5625
800	6400
850	7225
900	8100
950	9025
1000	10000

Beam diameter (mm)	Luminous intensity (cd)
100	100
150	225
200	400
250	625
300	900
350	1225
400	1600
450	2025
500	2500
550	3025
600	3600
650	4225
700	4900
750	5625
800	6400
850	7225
900	8100
950	9025
1000	10000

CaruLox Photonics 4.5 Philips Lighting B.V. Page 1/7

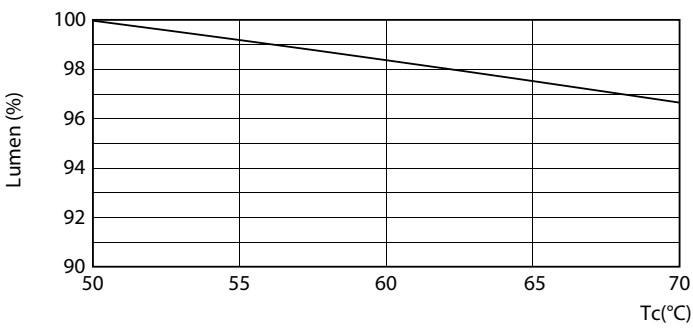
General uniform lighting - 12T8/PRO/48-840/IF18/G 10/1 FB

Photometric data

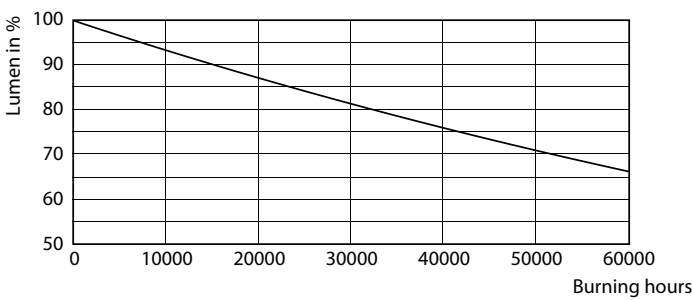


Light Distribution Diagram - 12T8/PRO/48-840/IF18/G 10/1 FB

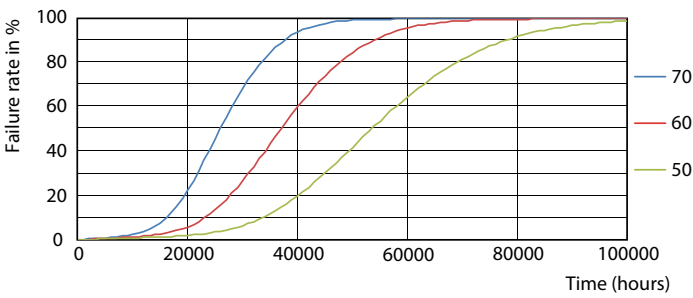
Lifetime



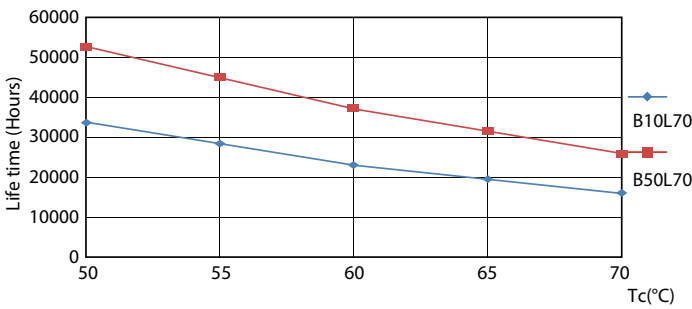
Lumen Maintenance Diagram - 12T8/PRO/48-840/IF18/G 10/1 FB



Lumen Maintenance Diagram - 12T8/PRO/48-840/IF18/G 10/1 FB

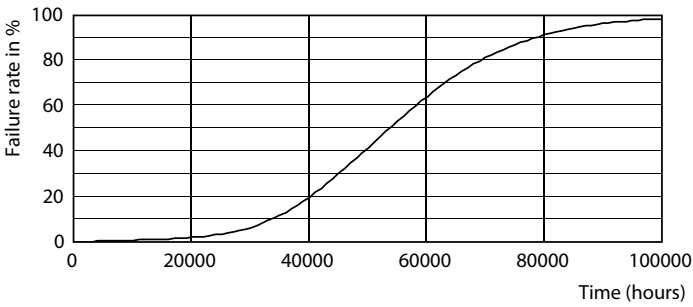


Life Expectancy Diagram - 12T8/PRO/48-840/IF18/G 10/1 FB



Life Expectancy Diagram - 12T8/PRO/48-840/IF18/G 10/1 FB

Lifetime



Life Expectancy Diagram - 12T8/PRO/48-840/IF18/G 10/1 FB

