



T8

12T8/PRO/48-840/IF18/G 10/1 FB

Our TLEDs are available in InstantFit (Type A / Type C) or MainsFit (Ballast bypass / Type B) versions. The InstantFit lamps work on a broad variety of ballasts and LED drivers. Only InstantFit has over 15,000 lamp & ballast combinations delivering even light output, energy savings and a long lifetime. Our MainsFit products feature a double-ended design, simplifying installation while a proprietary safety circuit minimizes a shock risk. Lamp sizes range from 2-foot to 8-foot and U-bend with a variety of lumen outputs.

Product data

General Information		Input Frequency	
Cap-Base	G13 [Medium Bi-Pin Fluorescent]	Power Consumption	25000-105000 Hz
Nominal lifetime	50,000 hour(s)	Lamp Current (Max)	12 W
Switching Cycle	50,000	Lamp Current (Min)	260 mA
Lighting Technology	LED	Starting Time (Nom)	100 mA
EU RoHS compliant	Yes	Warm-up time to 60% light	0.5 s
Light Technical		Power Factor (Fraction)	0.9
Color Code	840 [CCT of 4000K]	Voltage (Nom)	120-277, 347 V
Beam Angle (Nom)	240 degree(s)	UL Type	Type A - works on ballast Type C - works with dedicated LED driver Type A+C - works with both ballasts and the LED driver
Luminous Flux	1,800 lm	Temperature	
Color Designation	Cool White (CW)	Ambient temperature range	-20 °C to 45 °C
Correlated Color Temperature (Nom)	4000 K	T-Case Maximum (Nom)	50 °C
Luminous Efficacy (rated) (Nom)	150.00 lm/W	Controls and Dimming	
Color Consistency	<6	Dimmable	No
Color rendering index (CRI)	82	Operating and Electrical	
LLMF At End Of Nominal Lifetime (Nom)	70 %	Line Frequency	25000-105000 Hz

T8

Mechanical and Housing

Product Length	1,200 mm
Bulb Shape	Tube, double-ended

Approval and Application

Energy Saving Product	Yes
Approval Marks	UL certificate RoHS compliance DLC compliance
Energy Consumption kWh/1000 h	- kWh
Energy Certifications	DLC Standard

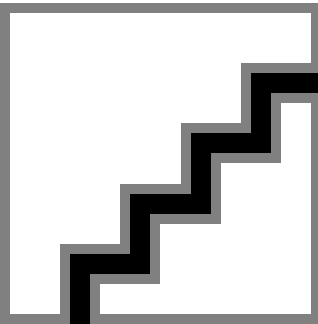
Product Data

Order product name	12T8/PRO/48-840/IF18/G 10/1 FB
Full product name	12T8/PRO/48-840/IF18/G 10/1 FB
Order code	929001866204
Material Nr. (12NC)	929001866204
Numerator - Quantity Per Pack	1
EAN/UPC - Product/Case	046677530488
Numerator - Packs per outer box	10
EAN/UPC - Case	50046677530483

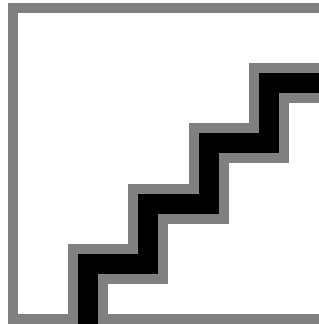
Dimensional drawing

Product	D1	D2	A1	A2	A3
12T8/PRO/48-840/IF18/G 10/1 FB	25.7 mm	26.3 mm	1,198.1 mm	1,205.2 mm	1,212.3 mm

Photometric data

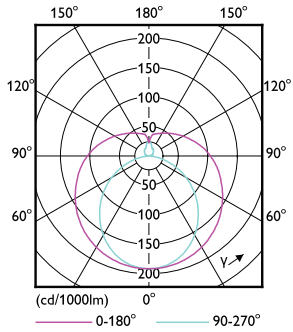


Spectral Power Distribution Colour - 12T8/PRO/48-840/IF18/G 10/1 FB



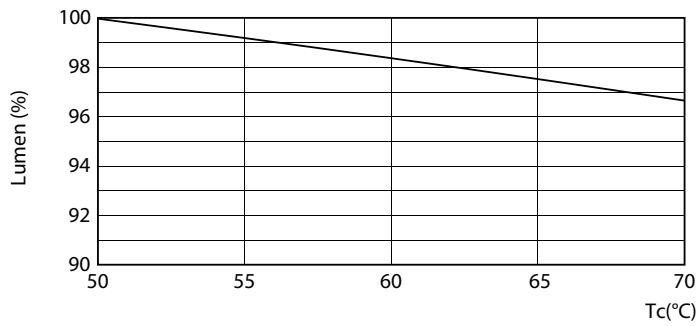
General uniform lighting - 12T8/PRO/48-840/IF18/G 10/1 FB

Photometric data

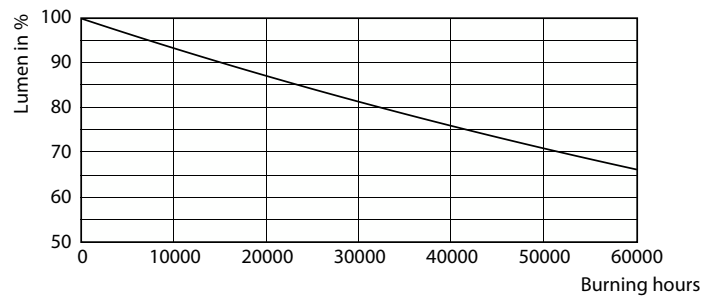


Light Distribution Diagram - 12T8/PRO/48-840/IF18/G 10/1 FB

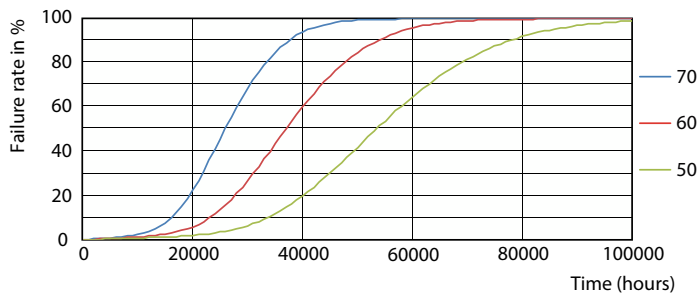
Lifetime



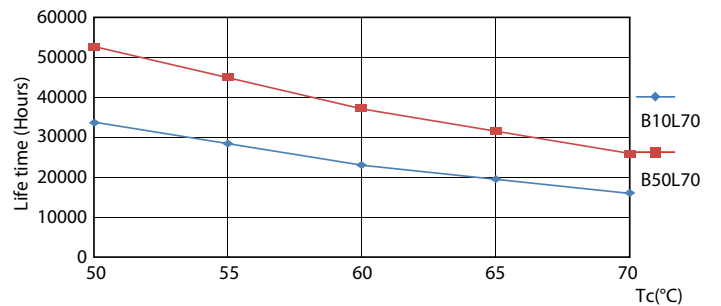
Lumen Maintenance Diagram - 12T8/PRO/48-840/IF18/G 10/1 FB



Lumen Maintenance Diagram - 12T8/PRO/48-840/IF18/G 10/1 FB



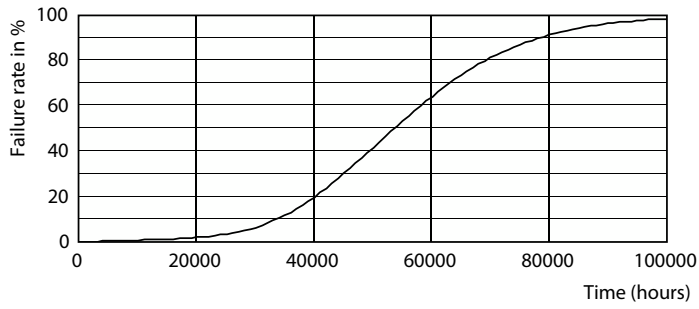
Life Expectancy Diagram - 12T8/PRO/48-840/IF18/G 10/1 FB



Life Expectancy Diagram - 12T8/PRO/48-840/IF18/G 10/1 FB

T8

Lifetime



Life Expectancy Diagram - 12T8/PRO/48-840/IF18/G 10/1 FB

