



T8

12T8/PRO/48-850/IF18/G 10/1 FB

Our TLEDs are available in InstantFit (Type A / Type C) or MainsFit (Ballast bypass / Type B) versions. The InstantFit lamps work on a broad variety of ballasts and LED drivers. Only InstantFit has over 15,000 lamp & ballast combinations delivering even light output, energy savings and a long lifetime. Our MainsFit products feature a double-ended design, simplifying installation while a proprietary safety circuit minimizes a shock risk. Lamp sizes range from 2-foot to 8-foot and U-bend with a variety of lumen outputs.

Product data

| General Information | |
|---------------------------------------|----------------------------------|
| Cap-Base | G13 [Medium Bi-Pin Fluorescent] |
| EU RoHS compliant | Yes |
| Nominal Lifetime (Nom) | 50000 h |
| Switching Cycle | 50000X |
| Light Technical | |
| Color Code | 850 [CCT of 5000K] |
| Beam Angle (Nom) | 240 ° |
| Luminous Flux (Nom) | 1800 lm |
| Color Designation | Daylight |
| Correlated Color Temperature (Nom) | 5000 K |
| Luminous Efficacy (rated) (Nom) | 150.00 lm/W |
| Color Consistency | <5 |
| Color Rendering Index (Nom) | 82 |
| LLMF At End Of Nominal Lifetime (Nom) | 70 % |
| Operating and Electrical | |
| Input Frequency | 25000-105000 Hz |
| Power (Nom) | 12 W |

| Lamp Current (Max) | 260 mA |
|---------------------------------|---|
| Lamp Current (Min) | 100 mA |
| Starting Time (Nom) | 0.5 s |
| Warm Up Time to 60% Light (Nom) | 0.5 s |
| UL Type | Type A - works on ballast Type C - works with dedicated LED driver Type A+C - works with both ballasts and the LED driver |
| Power Factor (Nom) | 0.9 |
| Voltage (Nom) | 120-277, 347 V |
| Temperature | |
| T-Ambient (Max) | 45 °C |
| T-Ambient (Min) | -20 °C |
| T-Storage (Max) | 65 °C |
| T-Storage (Min) | -40 °C |
| T-Case Maximum (Nom) | 50 °C |
| Controls and Dimming | |
| Dimmable | No |

Mechanical and Housing

| | |
|----------------|--------------------|
| Product Length | 1200 mm |
| Bulb Shape | Tube, double-ended |

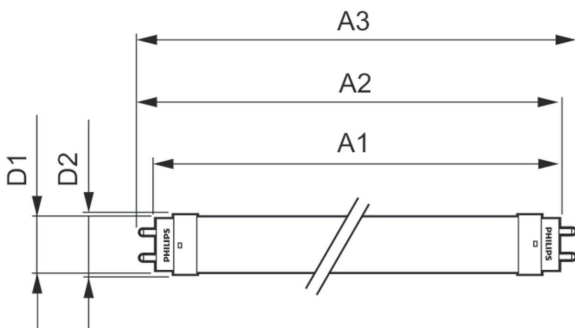
Approval and Application

| | |
|-------------------------------|---|
| Energy Saving Product | Yes |
| Approval Marks | UL certificate RoHS compliance DLC compliance |
| Energy Consumption kWh/1000 h | - kWh |
| Energy Certifications | DLC Standard |

Product Data

| | |
|---------------------------------|--------------------------------|
| Order product name | 12T8/PRO/48-850/IF18/G 10/1 FB |
| EAN/UPC - Product | 046677530495 |
| Order code | 929001866304 |
| Numerator - Quantity Per Pack | 1 |
| Numerator - Packs per outer box | 10 |
| Material Nr. (12NC) | 929001866304 |
| Net Weight (Piece) | 0.215 kg |

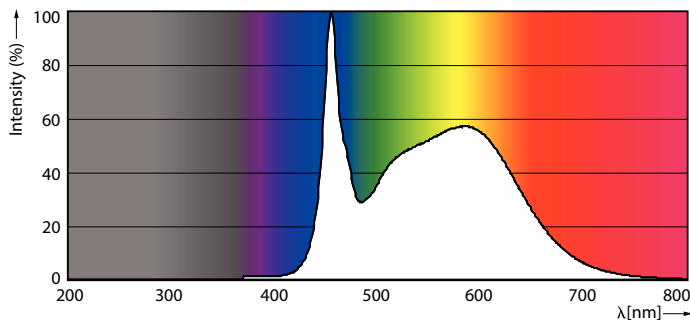
Dimensional drawing



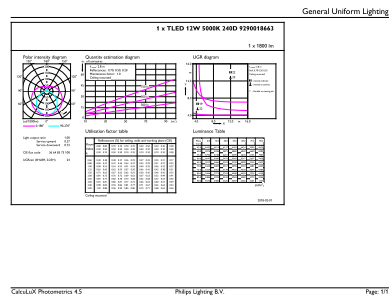
TLED 1200mm T8 120-277V 1700lm 5000K G13

| Product | D1 | D2 | A1 | A2 | A3 |
|--------------------------------|---------|---------|-----------|-----------|-----------|
| 12T8/PRO/48-850/IF18/G 10/1 FB | 25.7 mm | 26.3 mm | 1198.1 mm | 1205.2 mm | 1212.3 mm |

Photometric data

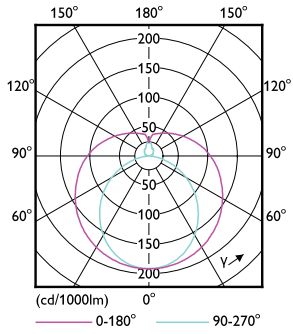


12W G13



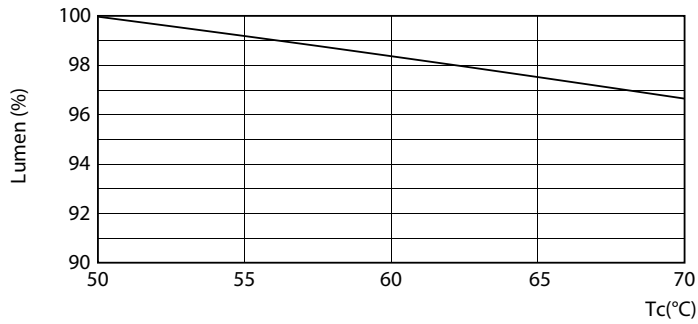
12W G13 850 5000K

Photometric data

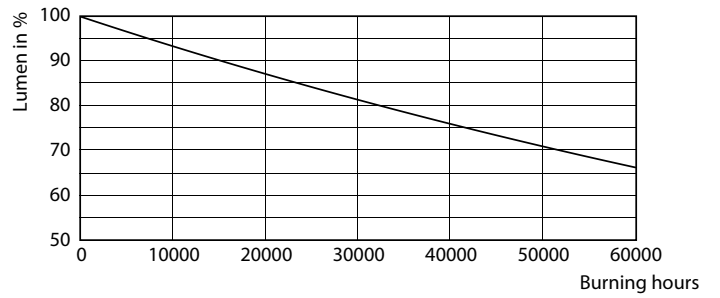


12W G13 830 3000K

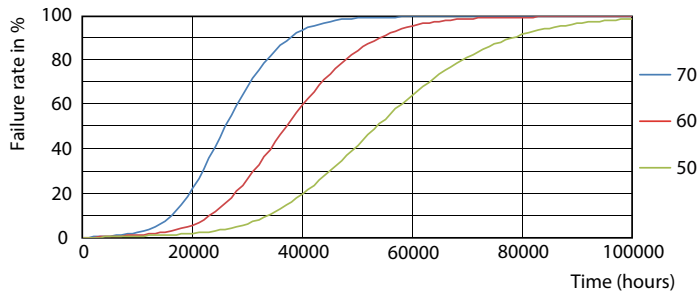
Lifetime



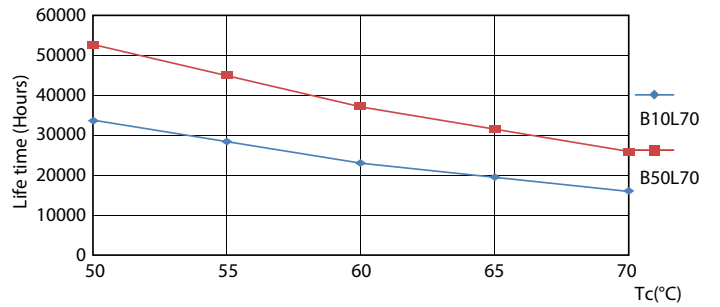
12W G13



12W G13



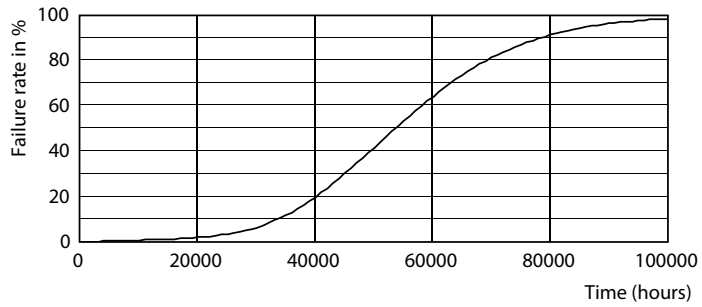
12W G13



12W G13

T8

Lifetime



12W G13

