



CorePro LED tube Universal T8



CorePro LEDtube UN 1200mm HO 18W840 T8

The new Philips CorePro LEDtube Universal T8 brings simplicity to your lighting project. You don't need to pay attention to the driver technology anymore. Thanks to a unique design, Philips CorePro LEDtube Universal T8 directly fits in luminaires operating either on Electro Magnetic ballasts or HF Electronic ballasts or mains power connection. So simple to operate and no need to carry double stock of products! Perfectly safe, reliable & easy to install Philips CorePro LEDtube Universal T8 is the ideal alternative to standard fluorescent tubes to save energy and lower investment.

Product data

General Information	
Cap-Base	G13 [Medium Bi-Pin Fluorescent]
Nominal lifetime	50,000 hour(s)
Switching Cycle	50,000
Lighting Technology	LED
Flux measurement reference	Sphere
CE mark	Yes
EU RoHS compliant	Yes

Light Technical	
Color Code	840 [CCT of 4000K]
Beam Angle (Nom)	240 degree(s)
Luminous Flux	2,000 lm
Color Designation	Cool White (CW)
Correlated Color Temperature (Nom)	4000 K
Luminous Efficacy (rated) (Nom)	111 lm/W
Color Consistency	<6

Color rendering index (CRI)	80
LLMF At End Of Nominal Lifetime (Nom)	70 %
Flickering value (PstLM) - Flickering value as per EN 61000-3-3	1
Stroboscopic effect visibility measure (SVM)	0.9
Photobiological safety according to EN 62471	RG0

Operating and Electrical	
Line Frequency	50 to 60 Hz
Input Frequency	50 to 60 Hz
Power Consumption	18 W
Lamp Current (Nom)	100 mA
Starting Time (Nom)	0.5 s
Warm-up time to 60% light	0.5 s
Power Factor (Fraction)	0.9
Voltage (Nom)	220-240 V
LED alternative to fluorescent lamp power	36 W

CorePro LED tube Universal T8

Inrush current at mains	9.4
Max. lamp no. on MCB B type 10A – Mains	82
Max. lamp no. on MCB B type 10A – EM ballast without Comp. Cap.	104
Max. lamp no. on MCB B type 10A – EM ballast with Comp. Cap.	19
Max. lamp no. on MCB B type 16A – Mains	131
Max. lamp no. on MCB B type 16A – EM ballast without Comp. Cap.	166
Max. lamp no. on MCB B type 16A – EM ballast with Comp. Cap.	30
Ballast Compatibility	Universal

Temperature

Ambient temperature range	-20 °C to 45 °C
T-Case Maximum (Nom)	55 °C

Controls and Dimming

Dimmable	No
----------	----

Mechanical and Housing

Bulb Finish	Frosted
Bulb Material	Glass
Product Length	1,200 mm

Bulb Shape	T8
------------	----

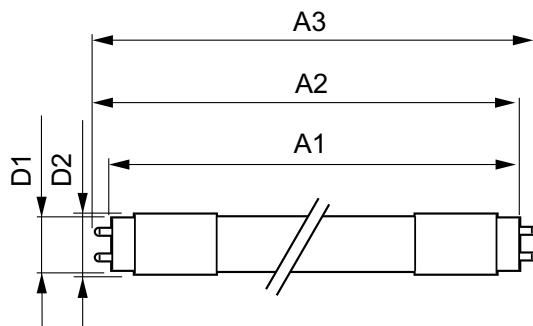
Approval and Application

Energy Efficiency Class	E
Energy Saving Product	Yes
Approval Marks	RoHS compliance TUV CE marking KEMA Keur certificate
Energy Consumption kWh/1000 h	18 kWh
EPREL Registration Number	1315788

Product Data

Order product name	CorePro LEDtube UN 1200mm HO 18W840 T8
Full product name	CorePro LEDtube UN 1200mm HO 18W840 T8
Full product code	871869680168000
Order code	929001869302
Material Nr. (12NC)	929001869302
Numerator - Quantity Per Pack	1
EAN/UPC - Product/Case	8718696801680
Numerator - Packs per outer box	10
EAN/UPC - Case	8718696801697

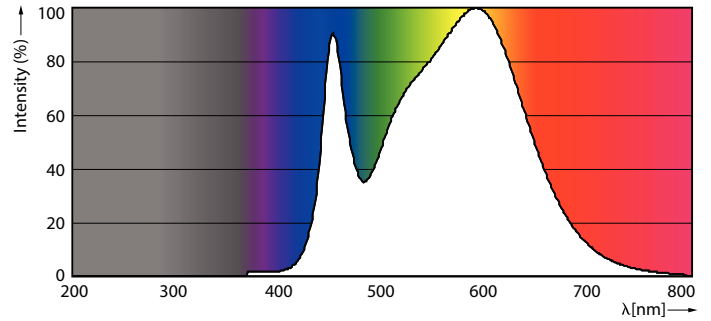
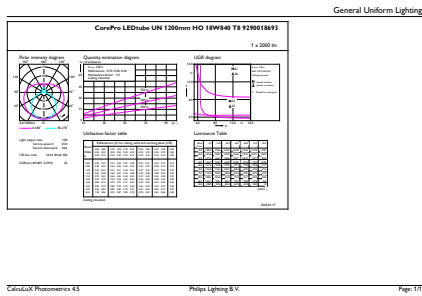
Dimensional drawing



Product	D1	D2	A1	A2	A3
CorePro LEDtube UN 1200mm HO 18W840 T8	27.9 mm	28 mm	1,199.4 mm	1,205.3 mm	1,213.6 mm

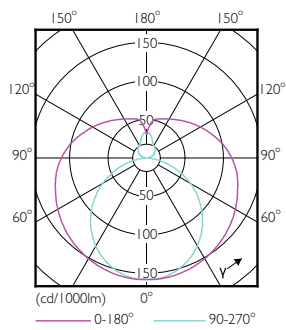
CorePro LED tube Universal T8

Photometric data



General uniform lighting - CorePro LEDtube UN 1200mm HO 18W840 T8

Spectral Power Distribution Colour - CorePro LEDtube UN 1200mm HO 18W840 T8

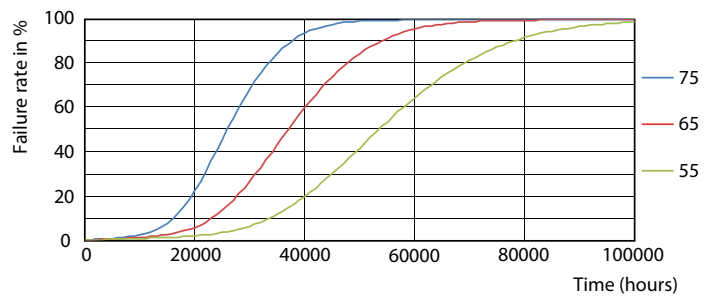


Light Distribution Diagram

Lifetime



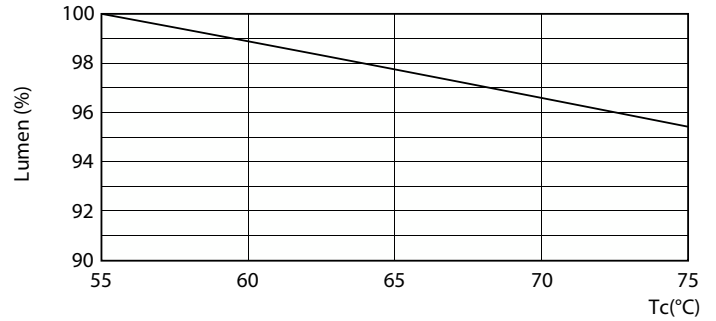
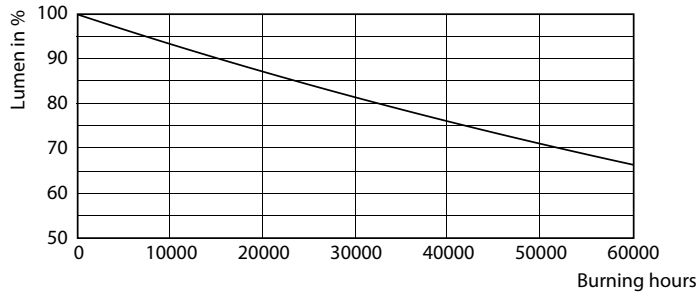
Life Expectancy Diagram - CorePro LEDtube UN 1200mm HO 18W840 T8



Life Expectancy Diagram - CorePro LEDtube UN 1200mm HO 18W840 T8

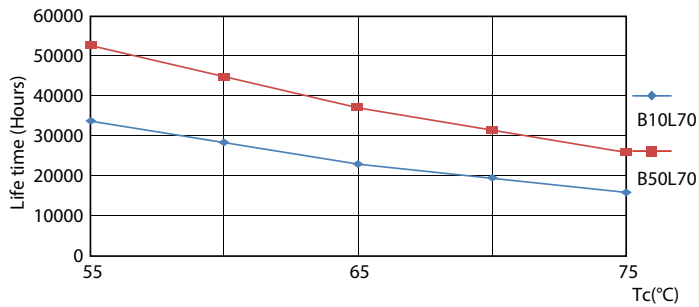
CorePro LED tube Universal T8

Lifetime



Lumen Maintenance Diagram - CorePro LEDtube UN 1200mm HO 18W840 T8

Lumen Maintenance Diagram - CorePro LEDtube UN 1200mm HO 18W840 T8



Life Expectancy Diagram - CorePro LEDtube UN 1200mm HO 18W840 T8

