



CorePro LED tube Universal T8



CorePro LEDtube UN 1500mm HO 23W830 T8

The new Philips CorePro LEDtube Universal T8 brings simplicity to your lighting project. You don't need to pay attention to the driver technology anymore. Thanks to a unique design, Philips CorePro LEDtube Universal T8 directly fits in luminaires operating either on Electro Magnetic ballasts or HF Electronic ballasts or mains power connection. So simple to operate and no need to carry double stock of products! Perfectly safe, reliable & easy to install Philips CorePro LEDtube Universal T8 is the ideal alternative to standard fluorescent tubes to save energy and lower investment.

Product data

General Information		Colour rendering index (CRI)	
Cap base	G13 [Medium Bi-Pin Fluorescent]		80
Nominal lifetime	50,000 h	LLMF at end of nominal lifetime (nom.)	70 %
Switching Cycle	50,000	Flickering value (PstLM)	1
Lighting Technology	LED	Stroboscopic effect	0.9
Flux measurement reference	Sphere	Photobiological safety according to EN 62471	RG0
CE mark	Yes	Operating and Electrical	
EU RoHS compliant	Yes	Line Frequency	50 to 60 Hz
Light Technical		Input frequency	50 to 60 Hz
Colour Code	830 [CCT of 3000K]	Power Consumption	23 W
Beam angle (nom.)	240 degree(s)	Lamp current (nom.)	130 mA
Luminous Flux	2,500 lm	Starting time (nom.)	0.5 s
Colour designation	White (WH)	Warm-up time to 60% light	0.5 s
Correlated Colour Temperature	3000 K	Power Factor (Fraction)	0.9
Luminous efficacy (rated) (nom.)	108.00 lm/W	Voltage (nom.)	220-240 V
Colour consistency	<6	LED alternative to fluorescent lamp power	58 W
		Inrush current at mains	9.6

CorePro LED tube Universal T8

Max. lamp no. on MCB B type 10A — Mains	80
Max. lamp no. on MCB B type 10A — EM ballast without Comp. Cap.	80
Max. lamp no. on MCB B type 10A — EM ballast with Comp. Cap.	16
Max. lamp no. on MCB B type 16A — Mains	128
Max. lamp no. on MCB B type 16A — EM ballast without Comp. Cap.	128
Max. lamp no. on MCB B type 16A — EM ballast with Comp. Cap.	25
Ballast Compatibility	Universal

Temperature

Ambient temperature range	-20°C to 45°C
T-Case maximum (nom.)	60 °C

Controls and Dimming

Dimmable	No
----------	----

Mechanical and Housing

Lamp Finish	Frosted
Bulb material	Glass
Product length	1,500 mm
Bulb shape	T8

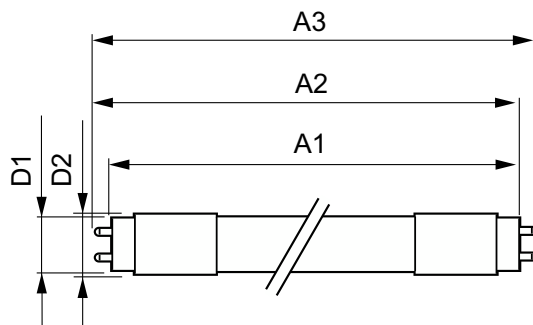
Approval and Application

Energy Efficiency Class	F
Energy-saving product	Yes
Approval marks	RoHS compliance TUV CE marking KEMA Keur certificate
Energy consumption kWh/1,000 hours	23 kWh
EPREL registration number	1315790

Product Data

Order product name	CorePro LEDtube UN 1500mm HO 23W830 T8
Full product name	CorePro LEDtube UN 1500mm HO 23W830 T8
Full EOC	871869680172700
Order code	80172700
Material no. (12 NC)	929001869502
SAP numerator – quantity per pack	1
EAN/UPC – Product/Case	8718696801727
Numerator – packs per outer box	10
EAN/UPC - Case	8718696801734

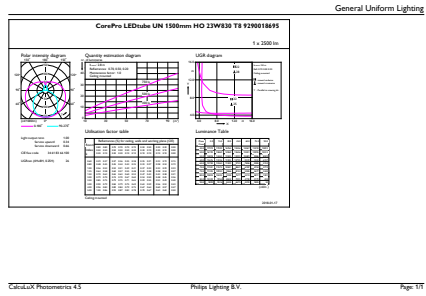
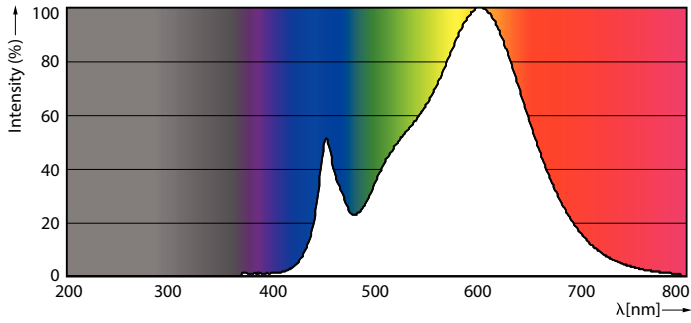
Dimensional drawing



Product	D1	D2	A1	A2	A3
CorePro LEDtube UN 1500mm HO 23W830 T8	27.9 mm	28 mm	1,500 mm	1,505.9 mm	1,514.2 mm

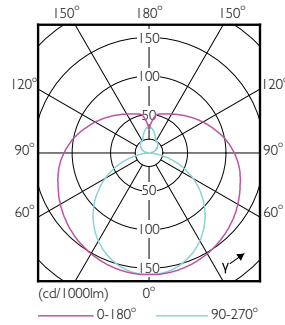
CorePro LED tube Universal T8

Photometric data



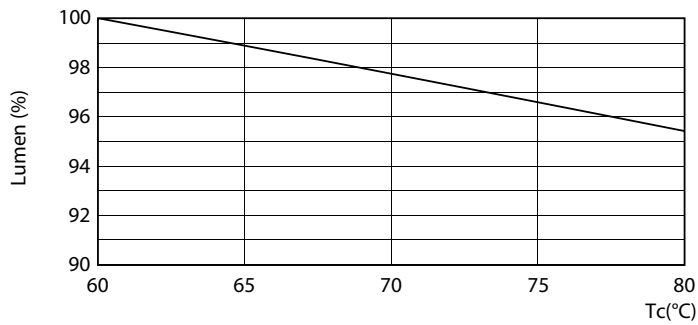
Spectral Power Distribution Colour - CorePro LEDtube UN 1500mm HO 23W830 T8

General uniform lighting - CorePro LEDtube UN 1500mm HO 23W830 T8

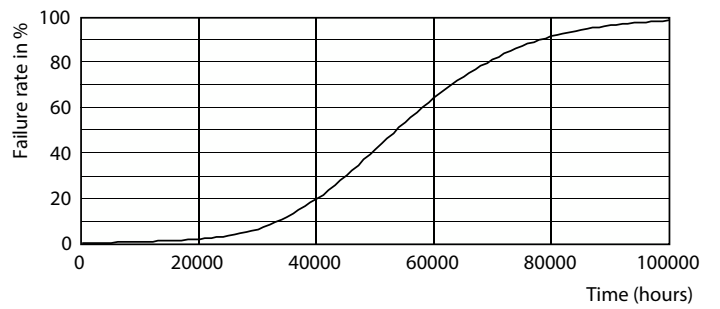


Light Distribution Diagram

Lifetime



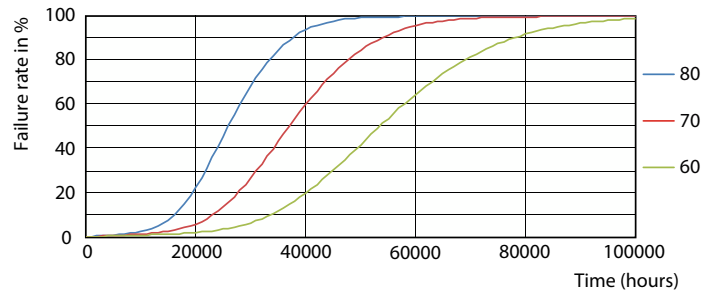
Lumen Maintenance Diagram - CorePro LEDtube UN 1500mm HO 23W830 T8



Life Expectancy Diagram - CorePro LEDtube UN 1500mm HO 23W830 T8

CorePro LED tube Universal T8

Lifetime



Life Expectancy Diagram - CorePro LEDtube UN 1500mm HO 23W830 T8

Life Expectancy Diagram - CorePro LEDtube UN 1500mm HO 23W830 T8



Lumen Maintenance Diagram - CorePro LEDtube UN 1500mm HO 23W830 T8

