



Specialty LEDtube

14T8/48-835/IF20/VLC 10/1

Philips specialty LEDtube integrates a LED light source into a traditional fluorescent form factor. This product is the ideal solution for relamping to serve multi-purpose usage: it meets general lighting requirements, offers significant energy savings, and special function such as Visible Light Communication.

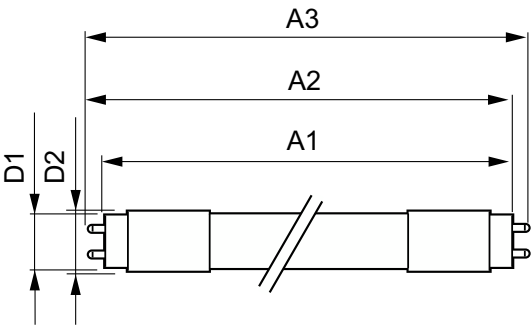
Product data

General Information			
Cap-Base	G13 [Medium Bi-Pin Fluorescent]	Lamp Current (Min)	130 mA
Nominal lifetime	70,000 hour(s)	Starting Time (Nom)	0.5 s
Switching Cycle	50,000	Warm-up time to 60% light	0.5 s
Lighting Technology	LED	Power Factor (Fraction)	0.9
EU RoHS compliant	Yes	Voltage (Nom)	120-277, 347 V
Light Technical		Temperature	
Color Code	835 [CCT of 3500K]	Ambient temperature range	-20 °C to 45 °C
Beam Angle (Nom)	160 degree(s)	T-Case Maximum (Nom)	50 °C
Luminous Flux	2,000 lm	Controls and Dimming	
Color Designation	White (WH)	Dimmable	No
Correlated Color Temperature (Nom)	3500 K	Mechanical and Housing	
Luminous Efficacy (rated) (Nom)	142.00 lm/W	Product Length	1,200 mm
Color Consistency	<6	Bulb Shape	T8
Color rendering index (CRI)	82	Approval and Application	
LLMF At End Of Nominal Lifetime (Nom)	70 %	Energy Saving Product	Yes
Operating and Electrical		Approval Marks	UL certificate RoHS compliance DLC compliance
Line Frequency	20000-120000 Hz	Energy Consumption kWh/1000 h	- kWh
Input Frequency	20000-120000 Hz		
Power Consumption	14 W		
Lamp Current (Max)	400 mA		

Product Data	
Order product name	14T8/48-835/IF20/VLC 10/1
Full product name	14T8/48-835/IF20/VLC 10/1
Order code	929001870104
Material Nr. (12NC)	929001870104
Numerator - Quantity Per Pack	1

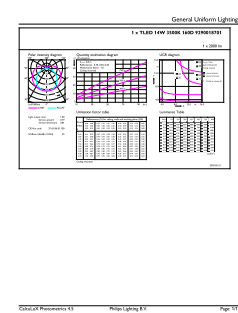
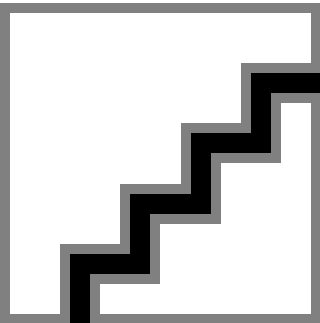
EAN/UPC - Product/Case	046677529987
Numerator - Packs per outer box	10
EAN/UPC - Case	50046677529982

Dimensional drawing



Product	D1	D2	A1	A2	A3
14T8/48-835/IF20/VLC 10/1	25.7 mm	26.3 mm	1,198.1 mm	1,205.2 mm	1,212.3 mm

Photometric data

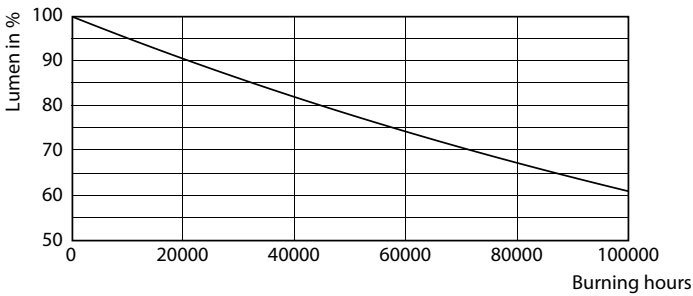


Spectral Power Distribution Colour - 14T8/48-835/IF20/VLC 10/1

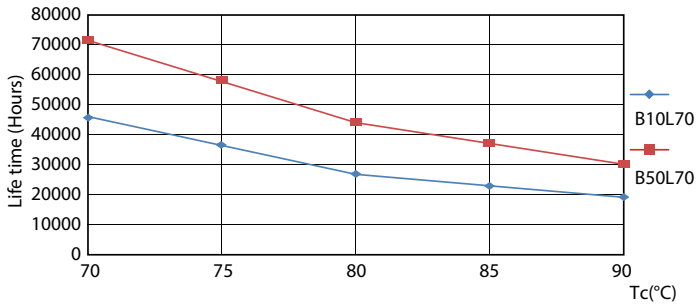
General uniform lighting - 14T8/48-835/IF20/VLC 10/1

Light Distribution Diagram - 14T8/48-835/IF20/VLC 10/1

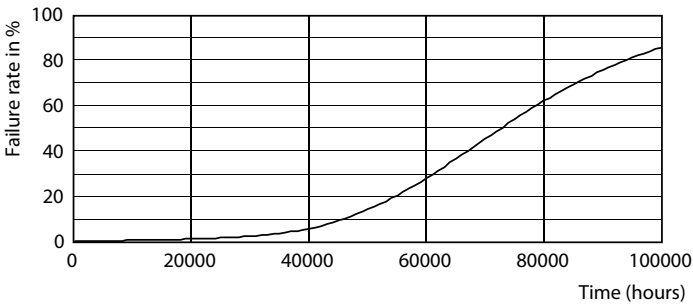
Lifetime



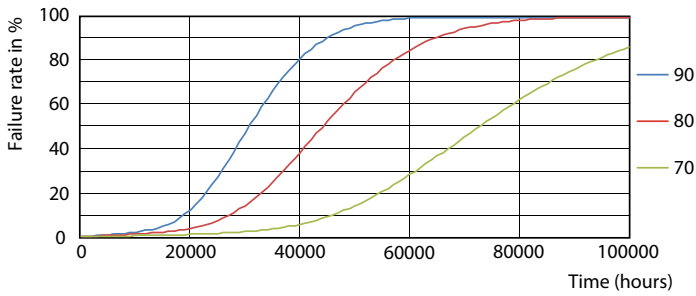
Lumen Maintenance Diagram - 14T8/48-835/IF20/VLC 10/1



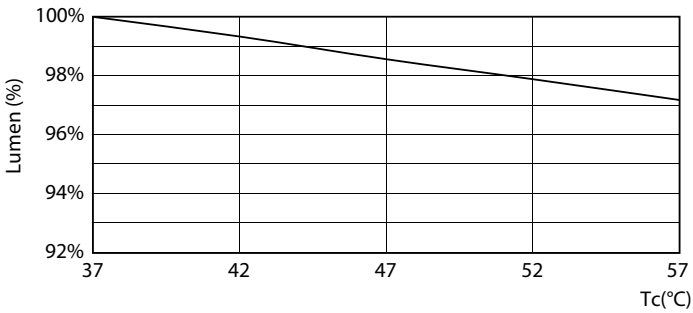
Life Expectancy Diagram - 14T8/48-835/IF20/VLC 10/1



Life Expectancy Diagram - 14T8/48-835/IF20/VLC 10/1



Life Expectancy Diagram - 14T8/48-835/IF20/VLC 10/1



Lumen Maintenance Diagram - 14T8/48-835/IF20/VLC 10/1

Specialty LEDtube

