

# Specialty LEDtube

## 14T8/48-840/IF21/VLC 10/1

Philips specialty LEDtube integrates a LED light source into a traditional fluorescent form factor. This product is the ideal solution for relamping to serve multi-purpose usage: it meets general lighting requirements, offers significant energy savings, and special function such as Visible Light Communication.

### Product data

General Information	
Cap-Base	G13 [Medium Bi-Pin Fluorescent]
Nominal lifetime	70,000 hour(s)
Switching Cycle	50,000
Lighting Technology	LED
EU RoHS compliant	Yes
Light Technical	
Color Code	840 [CCT of 4000K]
Beam Angle (Nom)	160 degree(s)
Luminous Flux	2,100 lm
Color Designation	Cool White (CW)
Correlated Color Temperature (Nom)	4000 K
Luminous Efficacy (rated) (Nom)	150.00 lm/W
Color Consistency	<6
Color rendering index (CRI)	82
LLMF At End Of Nominal Lifetime (Nom)	70 %
Operating and Electrical	
Line Frequency	20000-120000 Hz
Input Frequency	20000-120000 Hz
Power Consumption	14 W
Lamp Current (Max)	400 mA

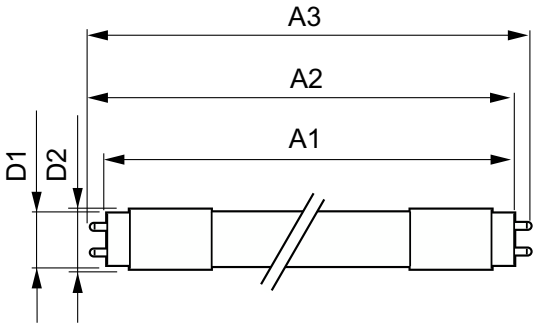
Lamp Current (Min)	130 mA
Starting Time (Nom)	0.5 s
Warm-up time to 60% light	0.5 s
Power Factor (Fraction)	0.9
Voltage (Nom)	120-277, 347 V
Temperature	
Ambient temperature range	-20 °C to 45 °C
T-Case Maximum (Nom)	50 °C
Controls and Dimming	
Dimmable	No
Mechanical and Housing	
Product Length	1,200 mm
Bulb Shape	Tube, double-ended
Approval and Application	
Energy Saving Product	Yes
Approval Marks	UL certificate RoHS compliance DLC compliance
Energy Consumption kWh/1000 h	- kWh

Specialty LEDtube

Product Data	
Order product name	14T8/48-840/IF21/VLC 10/1
Full product name	14T8/48-840/IF21/VLC 10/1
Order code	529999
Material Nr. (12NC)	929001870204
Numerator - Quantity Per Pack	1

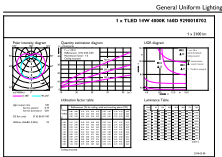
EAN/UPC - Product/Case	046677529994
Numerator - Packs per outer box	10
EAN/UPC - Case	50046677529999

Dimensional drawing

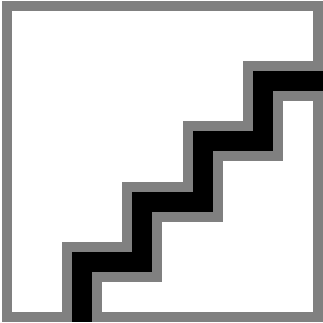


Product	D1	D2	A1	A2	A3
14T8/48-840/IF21/VLC 10/1	25.7 mm	26.3 mm	1,198.1 mm	1,205.2 mm	1,212.3 mm

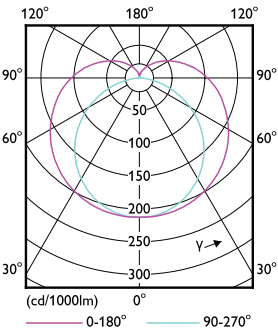
Photometric data



General uniform lighting - 14T8/48-840/IF21/VLC 10/1

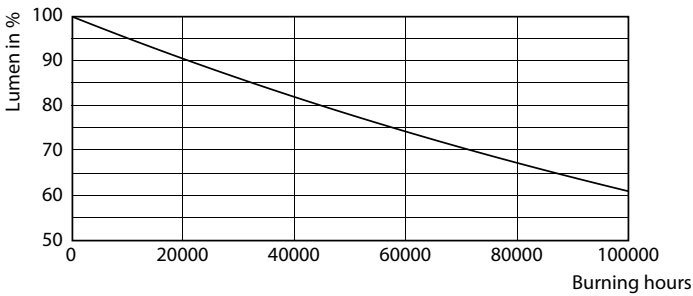


Spectral Power Distribution Colour - 14T8/48-840/IF21/VLC 10/1

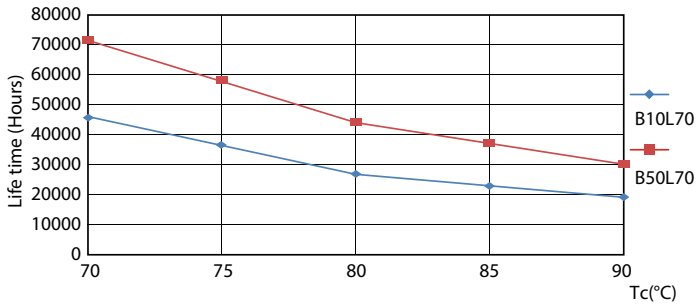


Light Distribution Diagram - 14T8/48-840/IF21/VLC 10/1

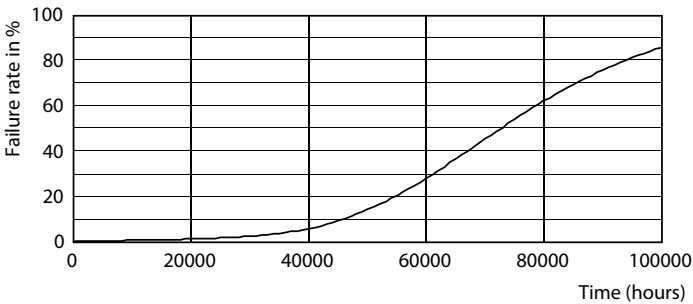
Lifetime



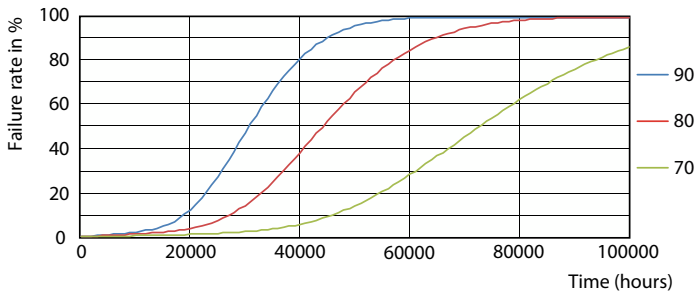
Lumen Maintenance Diagram - 14T8/48-840/IF21/VLC 10/1



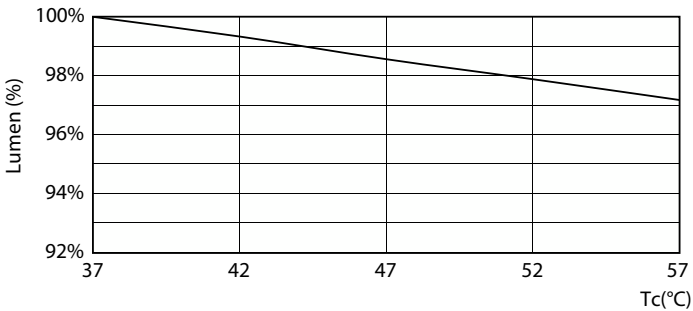
Life Expectancy Diagram - 14T8/48-840/IF21/VLC 10/1



Life Expectancy Diagram - 14T8/48-840/IF21/VLC 10/1



Life Expectancy Diagram - 14T8/48-840/IF21/VLC 10/1



Lumen Maintenance Diagram - 14T8/48-840/IF21/VLC 10/1

## Specialty LEDtube

