

# T8

## 12T8/PER/48-835/BB17/G 10/1 FB

Our TLEDs are available in InstantFit (Type A / Type C) or MainsFit (Ballast bypass / Type B) versions. The InstantFit lamps work on a broad variety of ballasts and LED drivers. Only InstantFit has over 15,000 lamp & ballast combinations delivering even light output, energy savings and a long lifetime. Our MainsFit products feature a double-ended design, simplifying installation while a proprietary safety circuit minimizes a shock risk. Lamp sizes range from 2-foot to 8-foot and U-bend with a variety of lumen outputs.

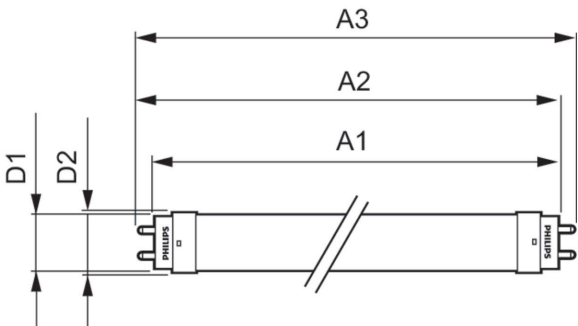
### Product data

<b>General Information</b>		<b>Input Frequency</b>	
Cap-Base	G13 [Medium Bi-Pin Fluorescent]	Power Consumption	12 W
Nominal lifetime	50,000 hour(s)	Lamp Current (Max)	120 mA
Switching Cycle	50,000	Lamp Current (Min)	40 mA
Lighting Technology	LED	Starting Time (Nom)	0.5 s
EU RoHS compliant	Yes	Warm-up time to 60% light	0.5 s
<b>Light Technical</b>		Power Factor (Fraction)	0.9
Color Code	835 [CCT of 3500K]	Voltage (Nom)	120-277 V
Beam Angle (Nom)	240 degree(s)	<b>Temperature</b>	
Luminous Flux	1,700 lm	Ambient temperature range	-20 °C to 45 °C
Color Designation	White (WH)	T-Case Maximum (Nom)	70 °C
Correlated Color Temperature (Nom)	3500 K	<b>Controls and Dimming</b>	
Luminous Efficacy (rated) (Nom)	141.00 lm/W	Dimmable	No
Color Consistency	<6	<b>Mechanical and Housing</b>	
Color rendering index (CRI)	80	Bulb Finish	Frosted
LLMF At End Of Nominal Lifetime (Nom)	70 %	Bulb Material	Glass
<b>Operating and Electrical</b>		Product Length	1,200 mm
Line Frequency	50 to 60 Hz		

Bulb Shape	Tube, double-ended
Approval and Application	
Energy Saving Product	Yes
Approval Marks	UL certificate RoHS compliance DLC compliance
Energy Consumption kWh/1000 h	- kWh
Energy Certifications	DLC Standard
Product Data	
Order product name	12T8/PER/48-835/BB17/G 10/1 FB

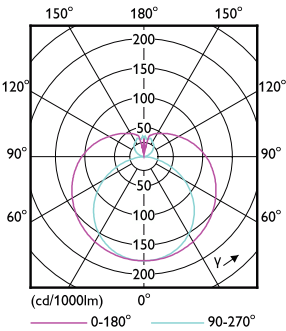
Full product name	12T8/PER/48-835/BB17/G 10/1 FB
Order code	532689
Material Nr. (12NC)	929001876904
Numerator - Quantity Per Pack	1
EAN/UPC - Product/Case	046677532680
Numerator - Packs per outer box	10
EAN/UPC - Case	50046677532685

Dimensional drawing

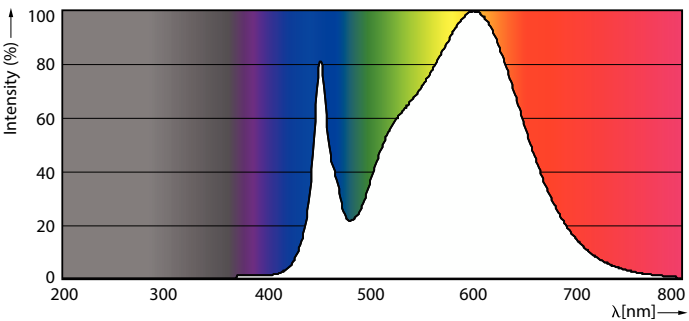


Product	D1	D2	A1	A2	A3
12T8/PER/48-835/BB17/G 10/1 FB	25.7 mm	28 mm	1,198 mm	1,205 mm	1,212 mm

Photometric data

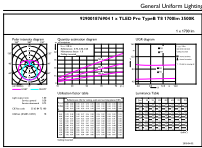


Light Distribution Diagram - 12T8/PER/48-835/BB17/G 10/1 FB



Spectral Power Distribution Colour - 12T8/PER/48-835/BB17/G 10/1 FB

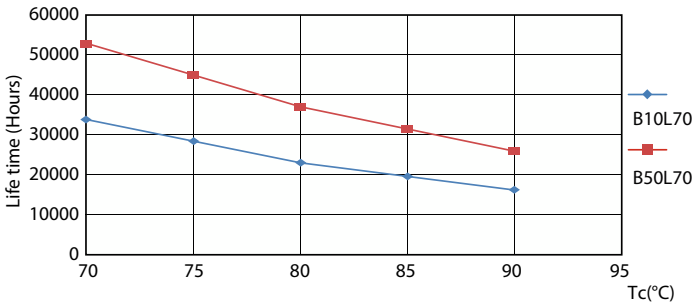
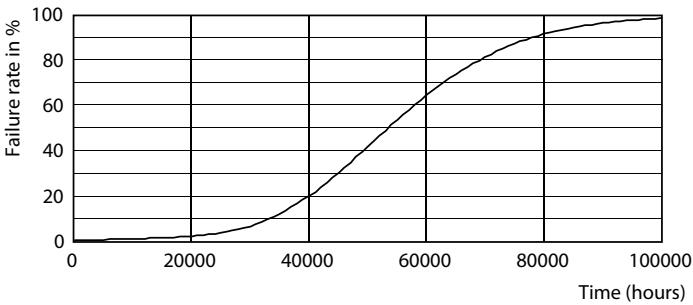
Photometric data



General Uniform Lighting

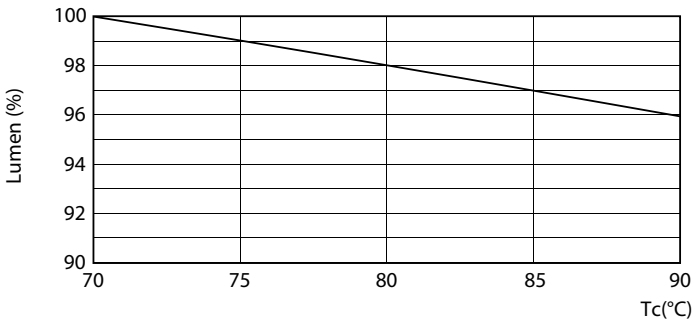
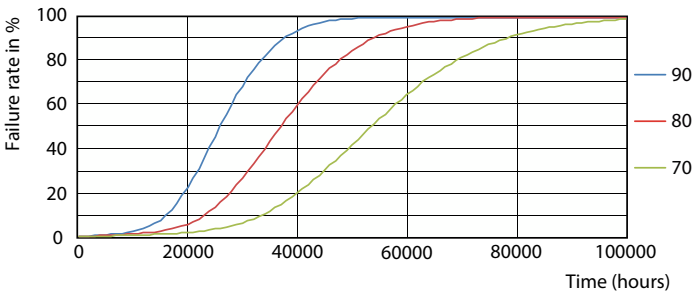
General uniform lighting - 12T8/PER/48-835/BB17/G 10/1 FB

Lifetime



Life Expectancy Diagram - 12T8/PER/48-835/BB17/G 10/1 FB

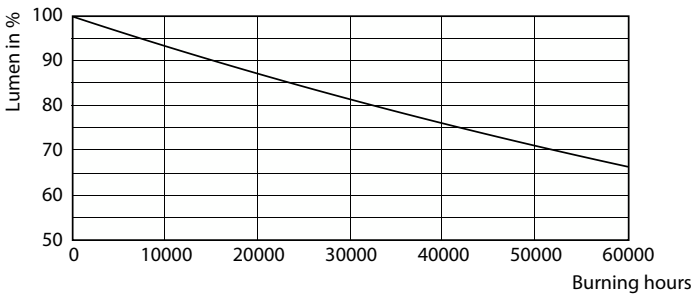
Life Expectancy Diagram - 12T8/PER/48-835/BB17/G 10/1 FB



Life Expectancy Diagram - 12T8/PER/48-835/BB17/G 10/1 FB

Lumen Maintenance Diagram - 12T8/PER/48-835/BB17/G 10/1 FB

Lifetime



Lumen Maintenance Diagram - 12T8/PER/48-835/BB17/G 10/1 FB

