



MASTER LEDtube EM/ Mains

MAS LEDtube Sensor 1500mm HO 24W865 T8

The Philips MASTER LEDtube integrates a LED light source into a traditional fluorescent form factor. Its unique design creates a perfectly uniform visual appearance which cannot be distinguished from traditional fluorescent. This product is the ideal solution for up lighting in general lighting applications.

Product data

General Information	
Cap base	G13 [Medium Bi-Pin Fluorescent]
RoHS mark	RoHS mark
Nominal lifetime (nom.)	50000 h
Switching cycle	200000X
B50L70	50000 h

Light Technical	
Colour code	865 [CCT of 6,500 K]
Beam Angle (Nom)	240 °
Luminous flux (nom.)	3100 lm
Luminous flux (rated) (nom.)	3100 lm
Rated beam angle	240 °
Correlated colour temperature (nom.)	6500 K
Colour consistency	<6
Color rendering index (nom.)	83
LLMF at end of nominal lifetime (nom.)	70 %

Operating and Electrical	
Input frequency	50 to 60 Hz

Power (Rated) (Nom)	24 W
Lamp current (max.)	118 mA
Lamp current (min.)	98 mA
Starting time (nom.)	0.5 s
Warm-up time to 60% light (nom.)	0.5 s
Power factor (nom.)	0.9
Voltage (Nom)	220-240 V

Temperature	
T ambient (max.)	45 °C
T ambient (min.)	-20 °C
T storage (max.)	65 °C
T storage (min.)	-40 °C
T-Case maximum (nom.)	60 °C

Controls and Dimming	
Dimmable	Yes

MASTER LEDtube EM/Mains

Mechanical and Housing

Product length 1500 mm

Approval and Application

Energy efficiency label (EEL) A++
 Energy-saving product Yes
 Approval marks CE marking RoHS compliance KEMA Keur certificate
 Energy Consumption kWh/1000 h 24 kWh

Product Data

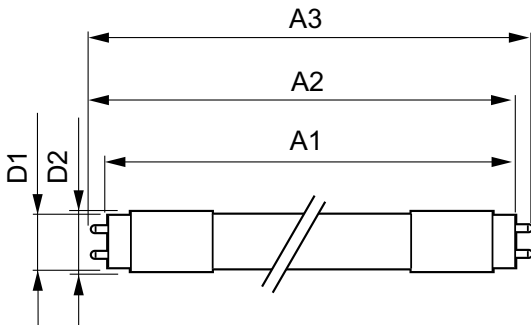
Full product code 871869680608100

Order product name	MAS LEDtube Sensor 1500mm HO 24W865 T8
EAN/UPC – product	8718696806081
Order code	80608100
Numerator – quantity per pack	1
Numerator – packs per outer box	10
Material no. (12NC)	929001878802
Net weight (piece)	0.270 kg

Warnings and Safety

• -

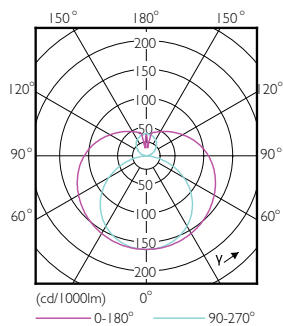
Dimensional drawing



TLED 1500mm 24-58W 3100lm 6500K G13 D

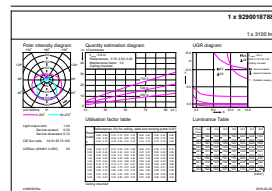
Product	D1	D2	A1	A2	A3
MAS LEDtube Sensor 1500mm HO 24W865 T8	25.8 mm	28 mm	1500 mm	1507.1 mm	1514.2 mm

Photometric data



16-5W G13 840 4000K

General Uniform Lighting

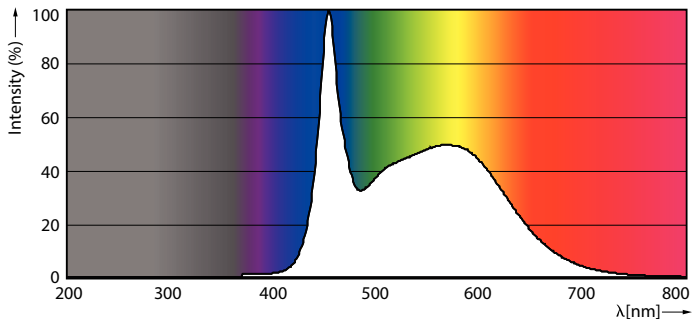


CALCUL Photometrics 4.5 Philips Lighting B.V. Page: 1/1

24W G13 865 6500K

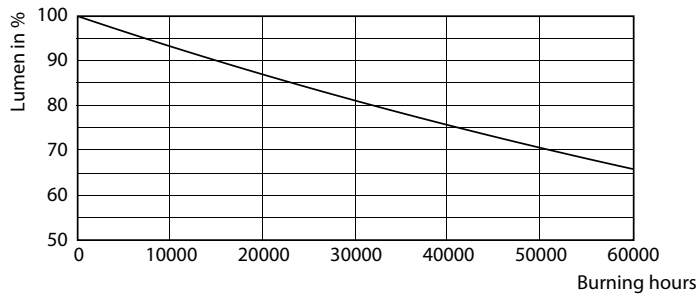
MASTER LEDtube EM/Mains

Photometric data

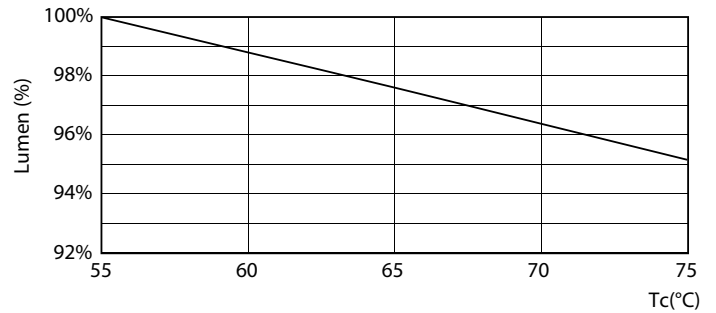


16-5W G13

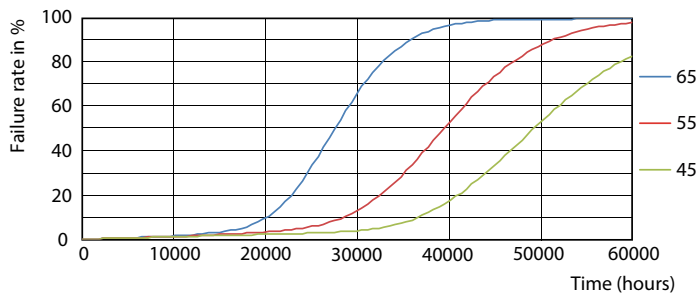
Lifetime



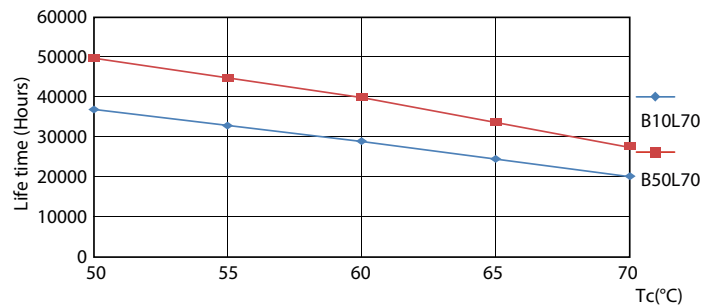
16-5W G13



24W G13



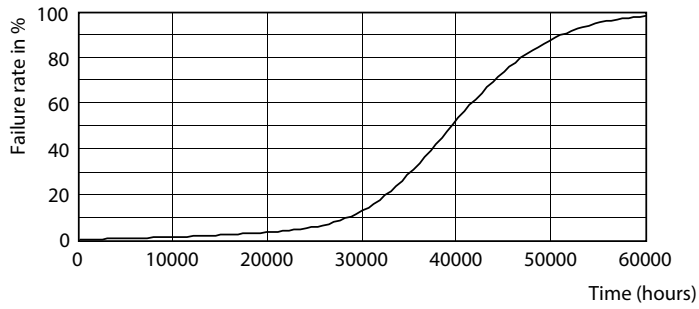
16-5W G13



16-5W G13

MASTER LEDtube EM/Mains

Lifetime



16-5W G13

