



PL-C/T

5PL-C/LED/13H/827/IF5/P/2P 20/1

Philips PLED 4-pin & 2-pin lamps are an affordable LED solution to replace compact fluorescent lamps. The product provides a natural lighting effect for use in many lighting applications, and provides instant energy savings, making them an environmentally-friendly solution. Available as replacements for 13W, 26W and 32W compact fluorescent lamps.

Product data

General Information	
Base	GX23-2 [GX23-2]
Nominal Lifetime (Nom)	50000 h
Switching Cycle	50000X
B50L70	50000 h
Light Technical	
Color Code	827 [CCT of 2700K]
Beam Angle (Nom)	150 °
Initial lumen (Nom)	520 lm
Luminous Flux (Rated) (Nom)	520 lm
Rated Beam Angle	150 °
Correlated Color Temperature (Nom)	2700 K
Color Consistency	<6
Color Rendering Index (Nom)	82
LLMF At End Of Nominal Lifetime (Nom)	70 %
Operating and Electrical	
Input Frequency	50 to 60 Hz
Power (Rated) (Nom)	5 W
Lamp Current (Max)	50 mA
Lamp Current (Min)	15 mA

Starting Time (Nom)	0.5 s
Warm Up Time to 60% Light (Nom)	0.5 s
Power Factor (Nom)	0.9
Voltage (Nom)	120-277 V
Temperature	
T-Ambient (Max)	45 °C
T-Ambient (Min)	-20 °C
T-Storage (Max)	65 °C
T-Storage (Min)	-40 °C
T-Case Maximum (Nom)	70 °C
Controls and Dimming	
Dimmable	No
Mechanical and Housing	
Height	27 mm
Approval and Application	
Energy Saving Product	Yes
Approbation Marks	UL certificate RoHS compliance

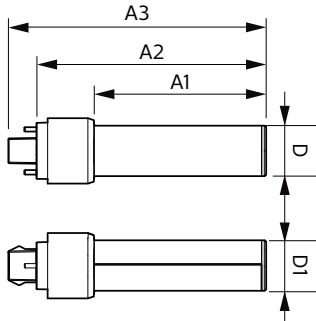
PL-C/T

Product Data

Order product name	5PL-C/LED/13H/827/IF5/P/2P 20/1
EAN/UPC - Product	046677532307
Order code	532309
Numerator - Quantity Per Pack	1
Numerator - Packs per outer box	20

Material Nr. (12NC)	929001884504
Net Weight (Piece)	0.001 kg
Model Number	9290018845

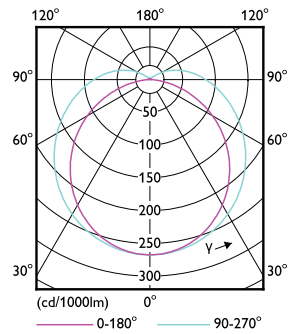
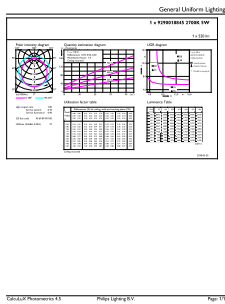
Dimensional drawing



PLED PLC-H 5-13W 550lm 2700K G24d

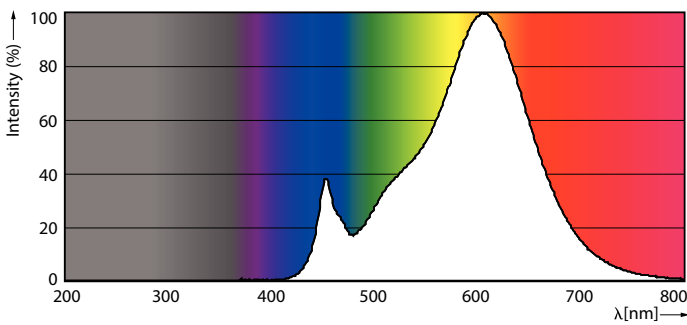
Product	D	D1	A1	A2	A3
5PL-C/LED/13H/827/IF5/P/2P	27 mm	27 mm	91.5 mm	122.4 mm	137.4 mm
20/1					

Photometric data



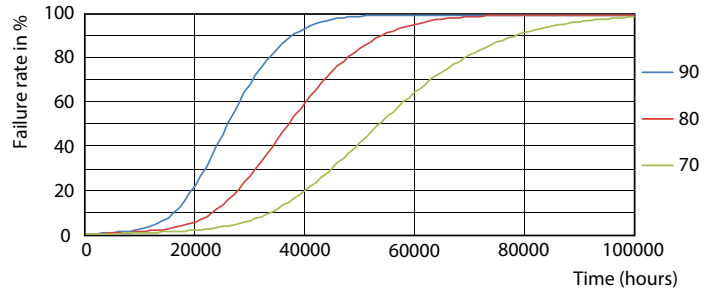
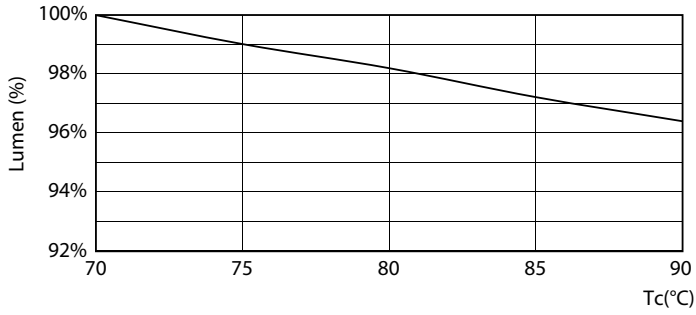
LEDtube PLC 13H 5W GX23-2 827 15D ND

LEDtube PLC 13H 5W GX23-2 827 15D ND

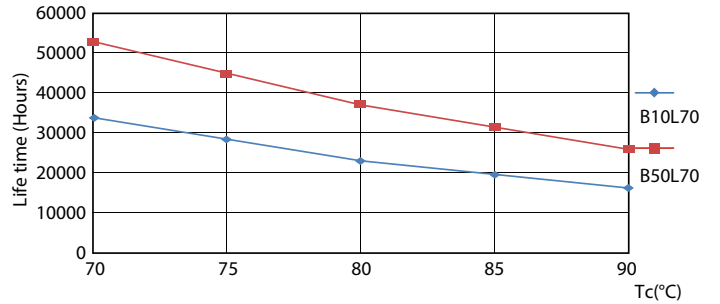
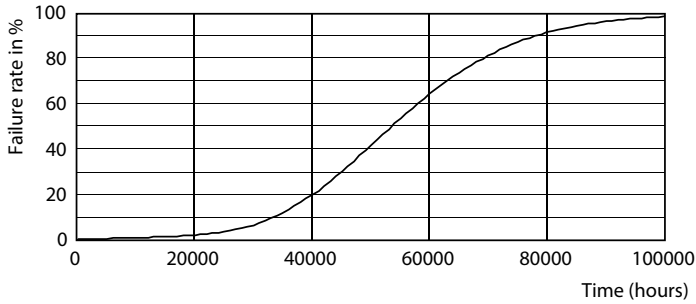


LEDtube PLC 13H 5W GX23-2 827 15D ND

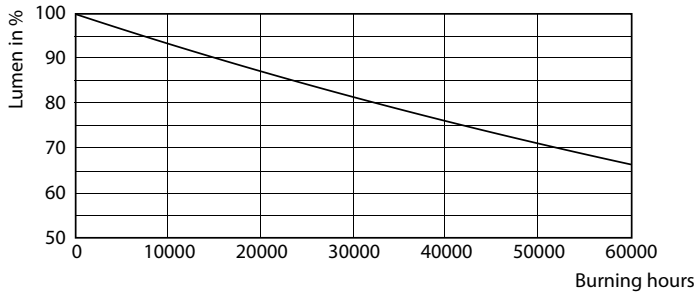
Lifetime



LEDtube PLC 13H 5W GX23-2 827 15D ND



LEDtube PLC 13H 5W GX23-2 827 15D ND



LEDtube PLC 13H 5W GX23-2 827 15D ND

