



PL-C/T

5PL-C/LED/13H/830/IF5/P/2P 20/1

Philips PLED 4-pin & 2-pin lamps are an affordable LED solution to replace compact fluorescent lamps. The product provides a natural lighting effect for use in many lighting applications, and provides instant energy savings, making them an environmentally-friendly solution. Available as replacements for 13W, 26W and 32W compact fluorescent lamps.

Product data

General Information		Lamp Current (Max)		50 mA
Cap-Base	GX23-2 [GX23-2]	Lamp Current (Min)		15 mA
Nominal lifetime	50,000 hour(s)	Starting Time (Nom)		0.5 s
Switching Cycle	50,000	Warm-up time to 60% light		0.5 s
Lighting Technology	LED	Power Factor (Fraction)		0.9
EU RoHS compliant	Yes	Voltage (Nom)		120-277 V
Light Technical		UL Type		Type A - works on ballast
Color Code	830 [CCT of 3000K]	Temperature		
Beam Angle (Nom)	150 degree(s)	Ambient temperature range		-20 °C to 45 °C
Luminous Flux	550 lm	T-Case Maximum (Nom)		70 °C
Color Designation	White (WH)	Controls and Dimming		
Correlated Color Temperature (Nom)	3000 K	Dimmable		No
Luminous Efficacy (rated) (Nom)	110.00 lm/W	Mechanical and Housing		
Color Consistency	<6	Bulb Material		Plastic
Color rendering index (CRI)	82	Product Length		140 mm
LLMF At End Of Nominal Lifetime (Nom)	70 %	Bulb Shape		Tube, single-ended
Operating and Electrical		Approval and Application		
Line Frequency	50 to 60 Hz	Energy Saving Product		Yes
Input Frequency	50 to 60 Hz			
Power Consumption	5 W			

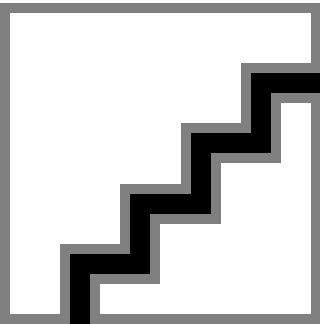
Approval Marks	UL certificate RoHS compliance
Energy Consumption kWh/1000 h	- kWh
Product Data	
Order product name	5PL-C/LED/13H/830/IF5/P/2P 20/1
Full product name	5PL-C/LED/13H/830/IF5/P/2P 20/1
Order code	929001884604

Material Nr. (12NC)	929001884604
Numerator - Quantity Per Pack	1
EAN/UPC - Product/Case	046677532314
Numerator - Packs per outer box	20
EAN/UPC - Case	50046677532319

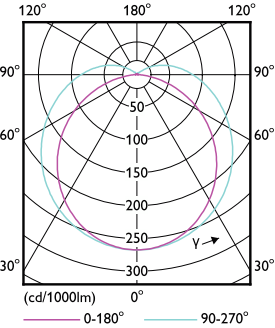
Dimensional drawing

Product	D	D1	A1	A2	A3
5PL-C/LED/13H/830/IF5/P/2P 20/1	27 mm	27 mm	91.5 mm	122.4 mm	137.4 mm

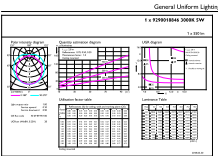
Photometric data



Spectral Power Distribution Colour - 5PL-C/LED/13H/830/IF5/P/2P 20/1

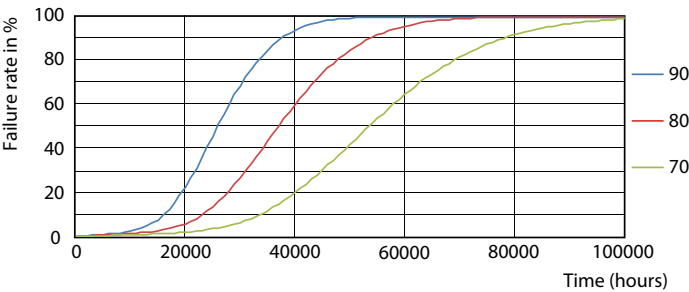


Light Distribution Diagram - 5PL-C/LED/13H/830/IF5/P/2P 20/1

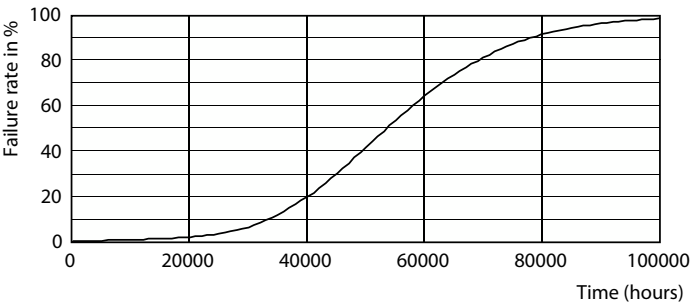


General uniform lighting - 5PL-C/LED/13H/830/IF5/P/2P 20/1

Lifetime



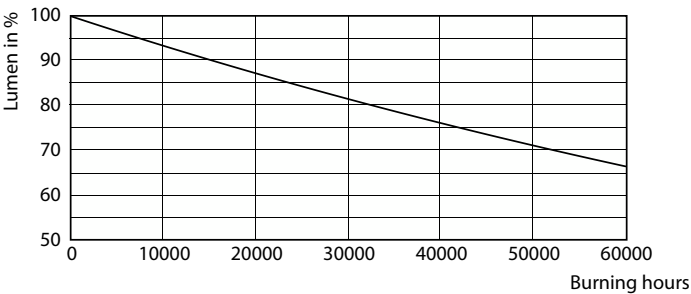
Lumen Maintenance Diagram - 5PL-C/LED/13H/830/IF5/P/2P 20/1



Life Expectancy Diagram - 5PL-C/LED/13H/830/IF5/P/2P 20/1



Life Expectancy Diagram - 5PL-C/LED/13H/830/IF5/P/2P 20/1



Life Expectancy Diagram - 5PL-C/LED/13H/830/IF5/P/2P 20/1



Lumen Maintenance Diagram - 5PL-C/LED/13H/830/IF5/P/2P 20/1



