



PL-C/T

5PL-C/LED/13V/835/IF5/P/2P 20/1

Philips PLED 4-pin & 2-pin lamps are an affordable LED solution to replace compact fluorescent lamps. The product provides a natural lighting effect for use in many lighting applications, and provides instant energy savings, making them an environmentally-friendly solution. Available as replacements for 13W, 26W and 32W compact fluorescent lamps.

Product data

| General information | |
|---------------------------------------|---------------------|
| Base | GX23-2 [GX23-2] |
| EU RoHS compliant | Yes |
| Nominal Lifetime (Nom) | 50000 h |
| Switching Cycle | 50000X |
| Light technical | |
| Color Code | 835 [CCT of 3500K] |
| Beam Angle (Nom) | 150 ° |
| Initial lumen (Nom) | 550 lm |
| Color Designation | White (WH) |
| Correlated Color Temperature (Nom) | 3500 K |
| Luminous Efficacy (rated) (Nom) | 110.00 lm/W |
| Color Consistency | <6 |
| Color Rendering Index (Nom) | 82 |
| LLMF At End Of Nominal Lifetime (Nom) | 70 % |
| Operating and electrical | |
| Input Frequency | 50 to 60 Hz |
| Power (Rated) (Nom) | 5 W |
| Lamp Current (Max) | 50 mA |
| Lamp Current (Min) | 15 mA |

| | |
|---------------------------------|---------------------------|
| Wattage Equivalent | 13 W |
| Starting Time (Nom) | 0.5 s |
| Warm Up Time to 60% Light (Nom) | 0.5 s |
| UL Type | Type A - works on ballast |
| Power Factor (Nom) | 0.9 |
| Voltage (Nom) | 120-277 V |

| Temperature | |
|----------------------|--------|
| T-Ambient (Max) | 45 °C |
| T-Ambient (Min) | -20 °C |
| T-Storage (Max) | 65 °C |
| T-Storage (Min) | -40 °C |
| T-Case Maximum (Nom) | 70 °C |

| Controls and dimming | |
|----------------------|----|
| Dimmable | No |

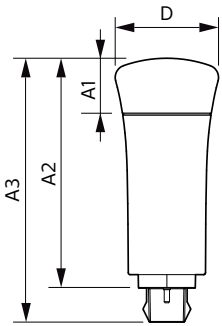
| Mechanical and housing | |
|------------------------|---------|
| Bulb Finish | Frosted |
| Bulb Material | Plastic |
| Product Length | 4 in |

PL-C/T

| | |
|---------------------------------|---------------------------------|
| Bulb Shape | Tube, single-ended |
| Approval and application | |
| Energy Saving Product | Yes |
| Approbation Marks | UL certificate RoHS compliance |
| Energy Consumption kWh/1000 h | - kWh |
| Product data | |
| Order product name | 5PL-C/LED/13V/835/IF5/P/2P 20/1 |

| | |
|---------------------------------|--------------|
| EAN/UPC - Product | 046677532376 |
| Order code | 532374 |
| Numerator - Quantity Per Pack | 1 |
| Numerator - Packs per outer box | 20 |
| Material Nr. (12NC) | 929001885104 |
| Net Weight (Piece) | 0.058 kg |
| Model Number | 9290018851 |

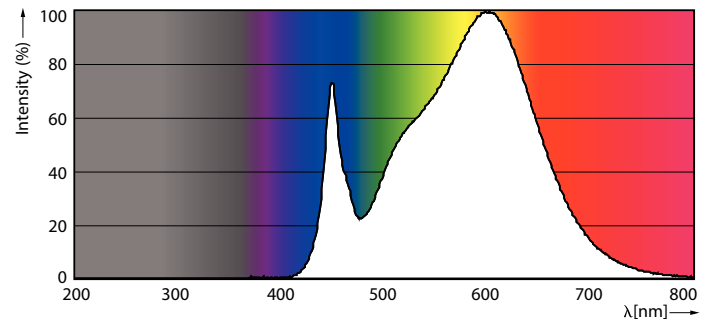
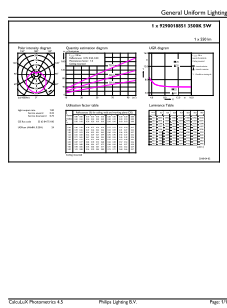
Dimensional drawing



5PL-C/LED/13V/835/IF5/P/2P 20/1

| Product | D | A1 | A2 | A3 |
|---------------------------------|---------|---------|----------|----------|
| 5PL-C/LED/13V/835/IF5/P/2P 20/1 | 45.7 mm | 24.6 mm | 101.6 mm | 117.6 mm |

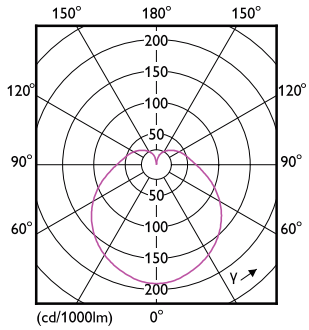
Photometric data



LEDtube PLC 13V 5W GX23-2 835 15D ND

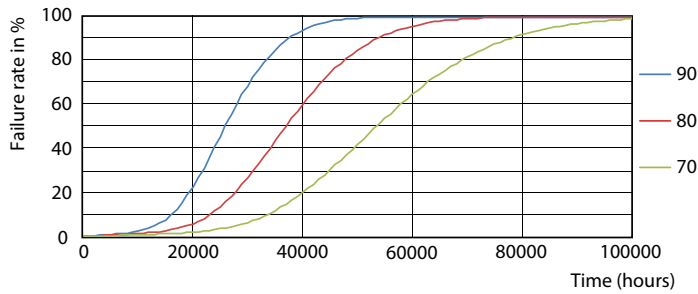
LEDtube PLC 13V 5W GX23-2 835 15D ND

Photometric data

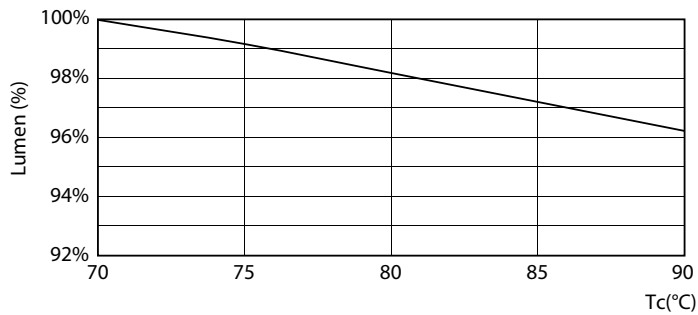


LEDtube PLC 13V 5W GX23-2 827 15D ND

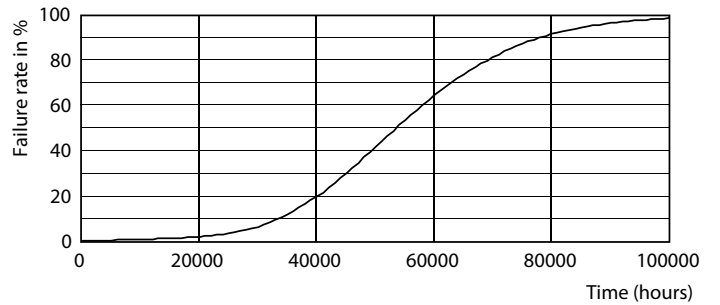
Lifetime



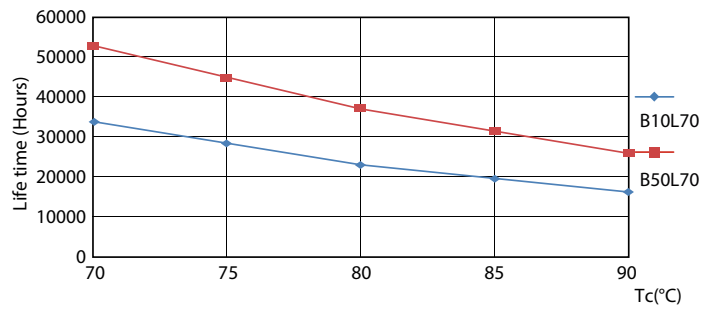
LEDtube PLC 13H 5W GX23-2 827 15D ND



LEDtube PLC 13V 5W GX23-2 827 15D ND



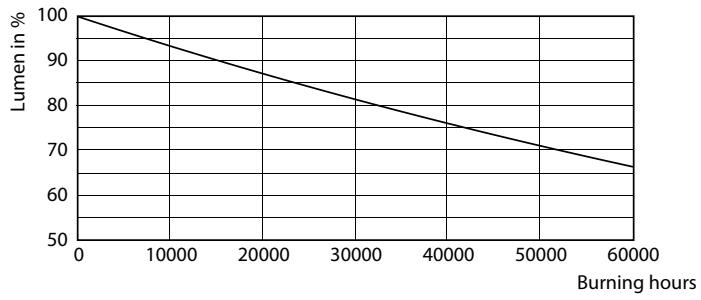
LEDtube PLC 13H 5W GX23-2 827 15D ND



LEDtube PLC 13H 5W GX23-2 827 15D ND

PL-C/T

Lifetime



LEDtube PLC 13H 5W GX23-2 827 15D ND

