



# PL-C/T

## 5PL-C/LED/13V/840/IF5/P/2P 20/1

Philips PLED 4-pin & 2-pin lamps are an affordable LED solution to replace compact fluorescent lamps. The product provides a natural lighting effect for use in many lighting applications, and provides instant energy savings, making them an environmentally-friendly solution. Available as replacements for 13W, 26W and 32W compact fluorescent lamps.

### Product data

|                                       |                    |                                  |  |                           |
|---------------------------------------|--------------------|----------------------------------|--|---------------------------|
| <b>General Information</b>            |                    | <b>Lamp Current (Max)</b>        |  | 50 mA                     |
| Cap-Base                              | GX23-2 [GX23-2]    | <b>Lamp Current (Min)</b>        |  | 15 mA                     |
| Nominal lifetime                      | 50,000 hour(s)     | <b>Wattage Equivalent</b>        |  | 13 W                      |
| Switching Cycle                       | 50,000             | <b>Starting Time (Nom)</b>       |  | 0.5 s                     |
| Lighting Technology                   | LED                | <b>Warm-up time to 60% light</b> |  | 0.5 s                     |
| EU RoHS compliant                     | Yes                | <b>Power Factor (Fraction)</b>   |  | 0.9                       |
| <b>Light Technical</b>                |                    | <b>Voltage (Nom)</b>             |  | 120-277 V                 |
| Color Code                            | 840 [CCT of 4000K] | <b>UL Type</b>                   |  | Type A - works on ballast |
| Beam Angle (Nom)                      | 150 degree(s)      | <b>Temperature</b>               |  |                           |
| Luminous Flux                         | 580 lm             | <b>Ambient temperature range</b> |  | -20 °C to 45 °C           |
| Color Designation                     | Cool White (CW)    | <b>T-Case Maximum (Nom)</b>      |  | 70 °C                     |
| Correlated Color Temperature (Nom)    | 4000 K             | <b>Controls and Dimming</b>      |  |                           |
| Luminous Efficacy (rated) (Nom)       | 116.00 lm/W        | <b>Dimmable</b>                  |  | No                        |
| Color Consistency                     | <6                 | <b>Mechanical and Housing</b>    |  |                           |
| Color rendering index (CRI)           | 82                 | <b>Bulb Finish</b>               |  | Frosted                   |
| LLMF At End Of Nominal Lifetime (Nom) | 70 %               | <b>Bulb Material</b>             |  | Plastic                   |
| <b>Operating and Electrical</b>       |                    | <b>Product Length</b>            |  | 100 mm                    |
| Line Frequency                        | 50 to 60 Hz        | <b>Bulb Shape</b>                |  | Tube, single-ended        |
| Input Frequency                       | 50 to 60 Hz        |                                  |  |                           |
| Power Consumption                     | 5 W                |                                  |  |                           |

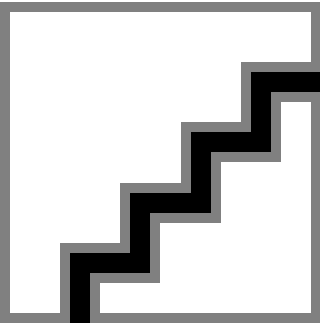
|                               |                                 |
|-------------------------------|---------------------------------|
| Approval and Application      |                                 |
| Energy Saving Product         | Yes                             |
| Approval Marks                | UL certificate RoHS compliance  |
| Energy Consumption kWh/1000 h | - kWh                           |
| Product Data                  |                                 |
| Order product name            | 5PL-C/LED/13V/840/IF5/P/2P 20/1 |
| Full product name             | 5PL-C/LED/13V/840/IF5/P/2P 20/1 |

Dimensional drawing

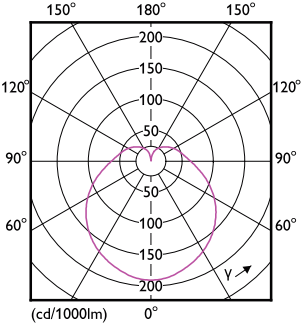
|                                 |                |
|---------------------------------|----------------|
| Order code                      | 929001885204   |
| Material Nr. (12NC)             | 929001885204   |
| Numerator - Quantity Per Pack   | 1              |
| EAN/UPC - Product/Case          | 046677532383   |
| Numerator - Packs per outer box | 20             |
| EAN/UPC - Case                  | 50046677532388 |

| Product                         | D       | A1      | A2       | A3       |
|---------------------------------|---------|---------|----------|----------|
| 5PL-C/LED/13V/840/IF5/P/2P 20/1 | 45.7 mm | 24.6 mm | 101.6 mm | 117.6 mm |

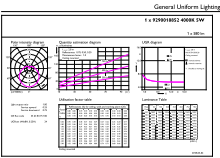
Photometric data



Spectral Power Distribution Colour - 5PL-C/LED/13V/840/IF5/P/2P 20/1

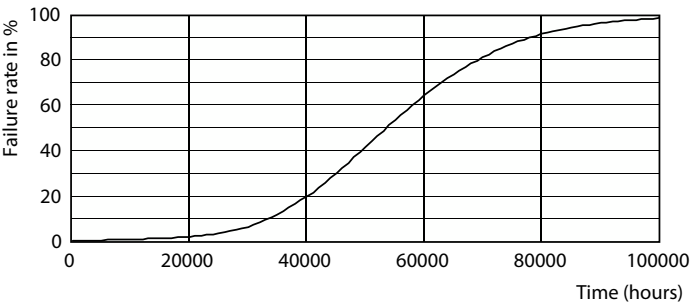
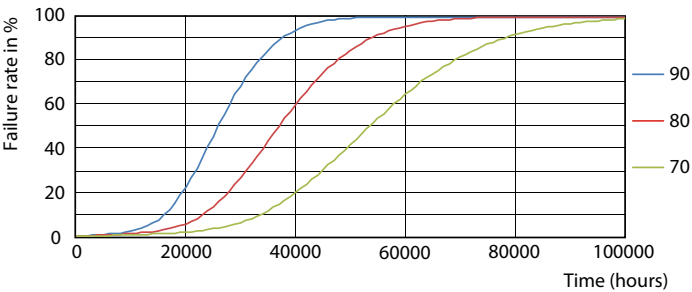


Light Distribution Diagram - 5PL-C/LED/13V/840/IF5/P/2P 20/1

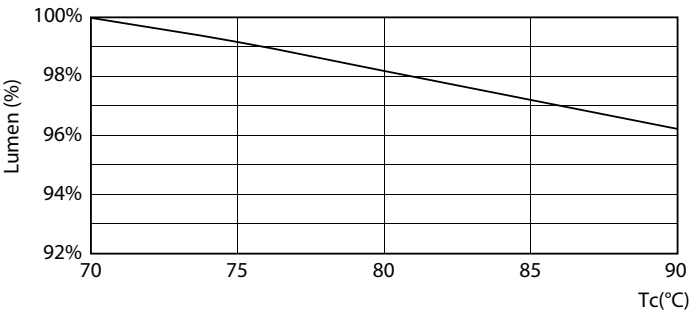


General uniform lighting - 5PL-C/LED/13V/840/IF5/P/2P 20/1

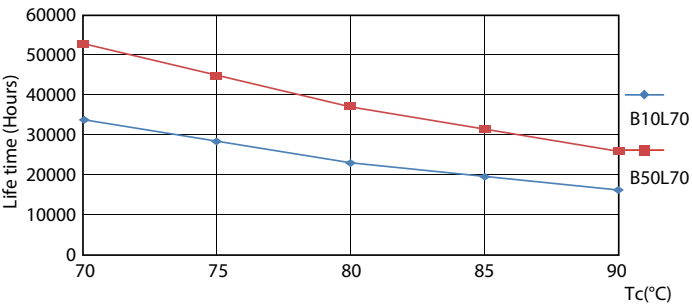
Lifetime



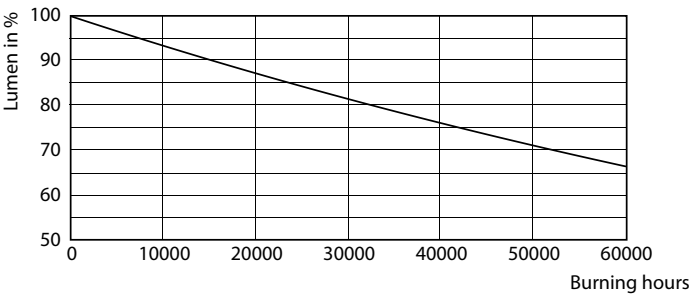
Life Expectancy Diagram - 5PL-C/LED/13V/840/IF5/P/2P 20/1



Life Expectancy Diagram - 5PL-C/LED/13V/840/IF5/P/2P 20/1



Lumen Maintenance Diagram - 5PL-C/LED/13V/840/IF5/P/2P 20/1



Life Expectancy Diagram - 5PL-C/LED/13V/840/IF5/P/2P 20/1

Lumen Maintenance Diagram - 5PL-C/LED/13V/840/IF5/P/2P 20/1

