



PL-C/T

5.5PL-C/LED/13H/827/IF5/P/4P 20/1

Philips PLED 4-pin & 2-pin lamps are an affordable LED solution to replace compact fluorescent lamps. The product provides a natural lighting effect for use in many lighting applications, and provides instant energy savings, making them an environmentally-friendly solution. Available as replacements for 13W, 26W and 32W compact fluorescent lamps.

Product data

General Information	
Base	G24Q [G24q]
Nominal Lifetime (Nom)	50000 h
Switching Cycle	50000X
B50L70	50000 h
Light Technical	
Color Code	827 [CCT of 2700K]
Beam Angle (Nom)	150 °
Initial lumen (Nom)	520 lm
Luminous Flux (Rated) (Nom)	520 lm
Rated Beam Angle	150 °
Correlated Color Temperature (Nom)	2700 K
Luminous Efficacy (rated) (Nom)	94.00 lm/W
Color Consistency	<6
Color Rendering Index (Nom)	82
LLMF At End Of Nominal Lifetime (Nom)	70 %
Operating and Electrical	
Input Frequency	25000-100000 Hz
Power (Rated) (Nom)	5.5 W
Lamp Current (Max)	280 mA

Lamp Current (Min)	130 mA
Starting Time (Nom)	0.5 s
Warm Up Time to 60% Light (Nom)	0.5 s
Power Factor (Nom)	0.9
Voltage (Nom)	14-60 V

Temperature	
T-Ambient (Max)	45 °C
T-Ambient (Min)	-20 °C
T-Storage (Max)	65 °C
T-Storage (Min)	-40 °C
T-Case Maximum (Nom)	75 °C

Controls and Dimming	
Dimmable	Yes

Mechanical and Housing	
Height	27 mm

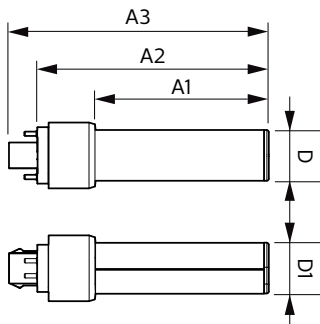
Approval and Application	
Energy Saving Product	Yes

PL-C/T

Approbation Marks	RoHS compliance UL certificate
Product Data	
Order product name	5.5PL-C/LED/13H/827/IF5/P/4P 20/1
EAN/UPC - Product	046677532390
Order code	532390
Numerator - Quantity Per Pack	1

Numerator - Packs per outer box	20
Material Nr. (12NC)	929001885304
Net Weight (Piece)	0.060 kg
Model Number	9290018853

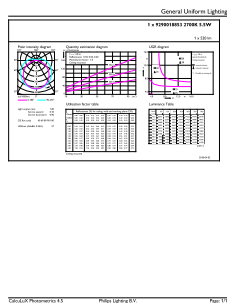
Dimensional drawing



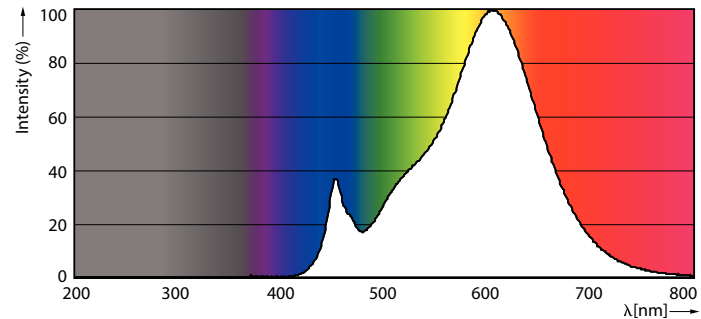
PLED PLC-H 5-13W 550lm 2700K G24q

Product	D	D1	A1	A2	A3
5.5PL-C/LED/13H/827/IF5/P/4P 20/1	27 mm	27 mm	91.5 mm	122.4 mm	137.4 mm

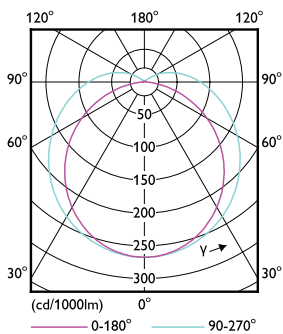
Photometric data



LEDtube PLC 13H 5.5W G24Q 827 15D ND

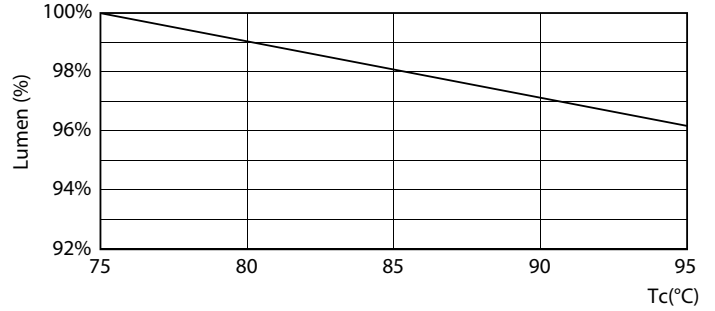
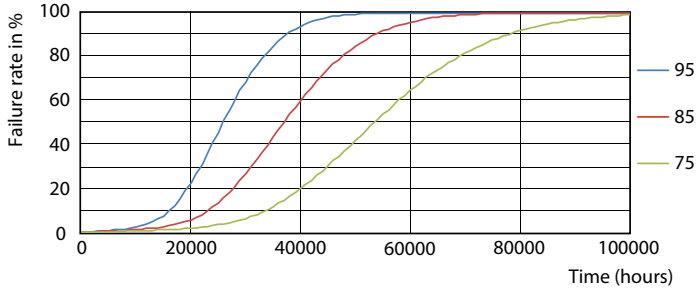


LEDtube PLC 13H 5.5W G24Q 827 15D ND



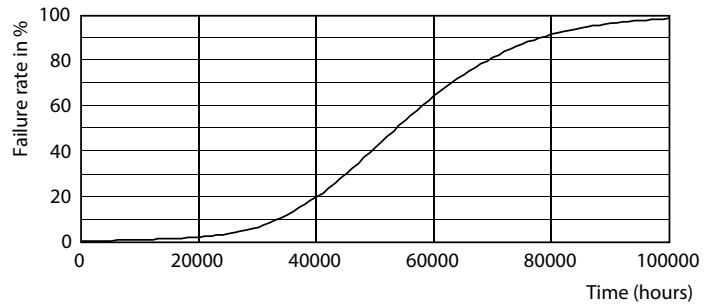
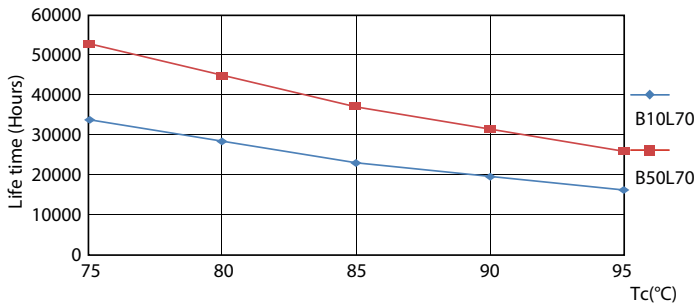
LEDtube PLC 13H 5W GX23-2 827 15D ND

Lifetime



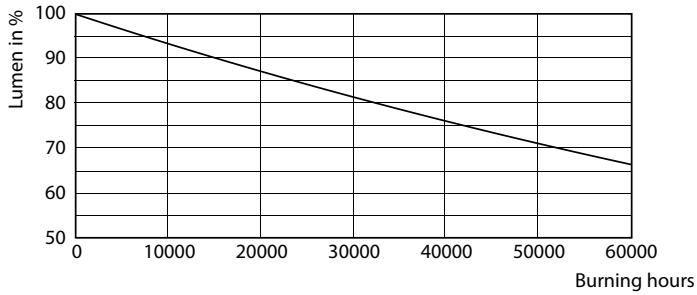
LEDtube PLC 13H 5.5W G24Q 827 15D ND

LEDtube PLC 13H 5.5W G24Q 827 15D ND



LEDtube PLC 13H 5.5W G24Q 827 15D ND

LEDtube PLC 13H 5W GX23-2 827 15D ND



LEDtube PLC 13H 5W GX23-2 827 15D ND

